



16/40a-42 Macleay Street POTTS POINT, NSW

3 bed | 1 bath

R&W

- * Marble security lobby, leafy garden setting, caretaker/building manager
- * Entry foyer, spacious adjoining open living, dining and sunroom/study
- * European oversized Miele galley kitchen, gas+electric hob, dishwasher, integrated fridge/freezer
- * Expansive layout with well-defined living/entertaining and bedroom wings
- * 3 good-size bedrooms, master with built-ins and sunroom access
- * Light spacious modern bathroom with deep bath, qualit...

rwebay.com.au/1431301

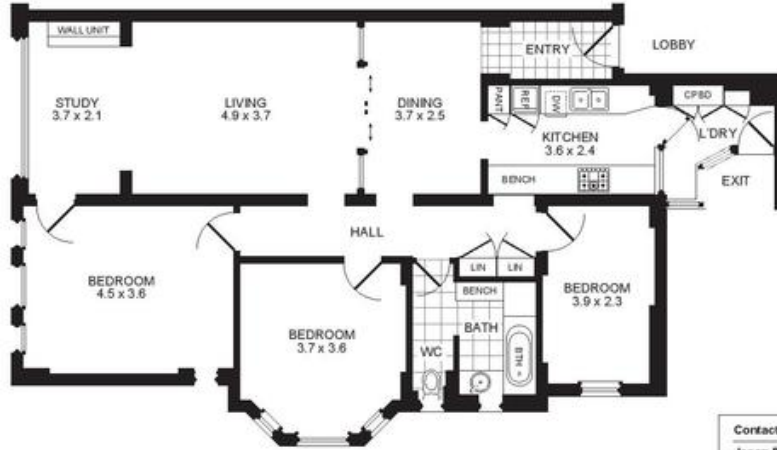
Jason Boon 0418 671 494

Geoff Cox 0418 231 004

Proudly Richardson&Wrench

Richardson & Wrench Elizabeth Bay / Potts Point
02 8356 2700

APARTMENT 16/40A-42 MACLEAY STREET
POTTS POINT



FLOOR PLAN
Scale 1cm = 1m (approx)

PROMOPLANS ...adding REAL value!
ES&OE This plan is for illustrative purposes only and dimensions are approximate. It does not constitute part of any legal document or commercial contract for the sale or lease of this property.
COPYRIGHT © 2014 PROMOPLANS 02 9572 7111
Warning: Usage restricted under the Copyright Act

Contact

Jason Boon
Phone: 8356 2700 Mobile: 0418 671 494
Email: jboon@rwebay.com.au

Geoff Cox
Phone: 8356 2734 Mobile: 0418 231 004
Email: gcox@rwebay.com.au

R&W

Elizabeth Bay / Potts Point
8356 2700