



42/17 Wylde Street POTTS POINT, NSW

2 bed | 1 bath

R&W

- * Lift access, only one other apartment shares this 4th floor lift lobby
- * Entry hall (b/ins), large open living/dining room with private balcony
- * Oversized master bedroom, double 2nd bedroom leads to balcony
- * Light airy older style bathroom with bathtub and separate shower
- * Spacious kitchen with dishwasher, 11ve gas stove, shared rear balcony
- * High ceilings, herringbone parquet floors, large ar...

rwebay.com.au/1469193

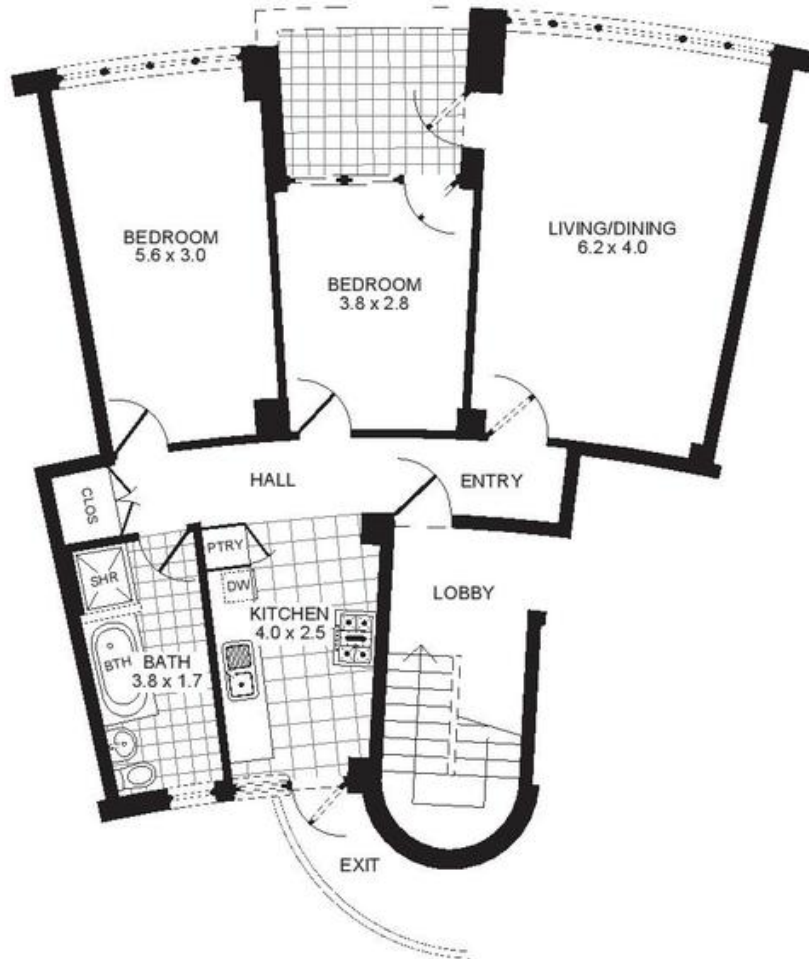
Jason Boon 0418 671 494

Geoff Cox 0418 231 004

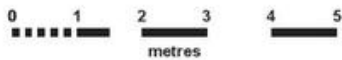
Proudly Richardson&Wrench

Richardson & Wrench Elizabeth Bay / Potts Point
02 8356 2700

APARTMENT 42/17 WYLDE STREET
POTTS POINT



FLOOR PLAN
Scale 1cm = 1m (approx)



PROMOPLANS ...adding REAL value!

E&OE This plan is for illustrative purposes only and dimensions are approximate. It does not constitute part of any legal document or commercial contract for the sale or lease of this property.
COPYRIGHT © 2014 PROMOPLANS 02 9572 7111
Warning: Usage restricted under the Copyright Act

Contact

Jason Boon
Phone: 8356 2700 Mobile: 0418 671 494
Email: jboon@rwebay.com.au

Geoff Cox
Phone: 8356 2734 Mobile: 0418 231 004
Email: gcox@rwebay.com.au

R&W

Elizabeth Bay | Potts Point
8356 2700