



## 20/133 Macleay Street POTTS POINT, NSW

2 bed | 1 bath

**R&W**

With a timeless interior and sense of space emphasised by its generous dimensions and soaring ceilings, this two bedroom plus dining/sunroom apartment offers a versatile floorplan that is both well proportioned and functional.

Features include:

- \* Spacious Large living space room with features high ceilings and ornate ceilings with original cornices and ceiling rose.
- \* Sunroom features a large picture window area with wide glass frontage offering private city outlook
- \* Sunroom adjoins both bedroom and living - ideal as a ...

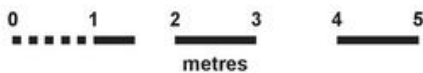
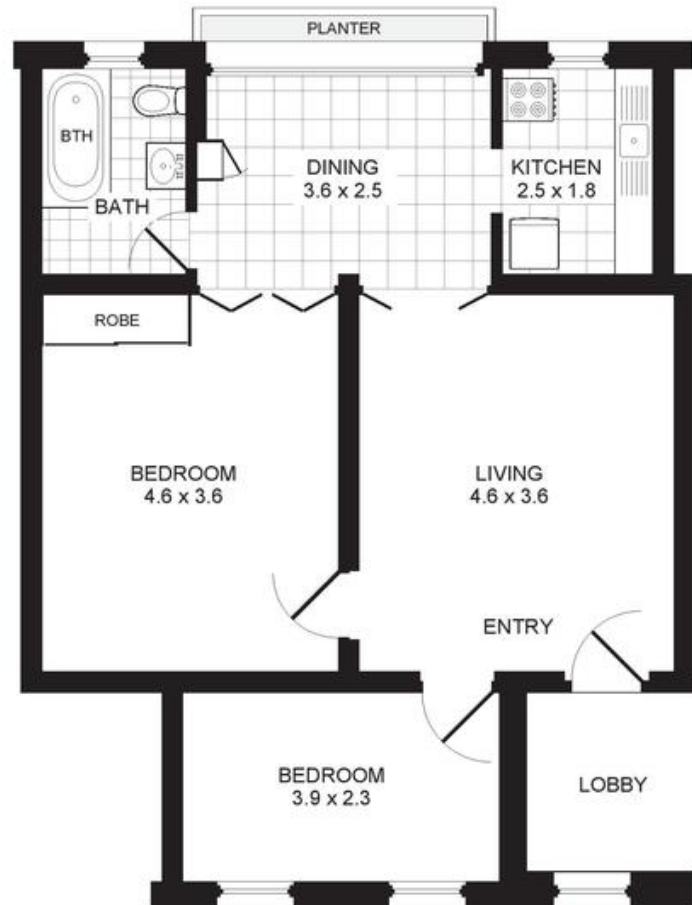
**[rwebay.com.au/1481125](http://rwebay.com.au/1481125)**

R&W Elizabeth Bay Potts Point

**Proudly Richardson & Wrench**

Richardson & Wrench Elizabeth Bay / Potts Point  
02 8356 2700

# APARTMENT 20/133 MACLEAY STREET POTTS POINT



## **PROMOPLANS ...adding REAL value!**

E&OE This plan is for illustrative purposes only and dimensions are approximate. It does not constitute part of any legal document or commercial contract for the sale or lease of this property.

COPYRIGHT © 2014 PROMOPLANS 02 9572 7111  
Warning: Usage restricted under the Copyright Act

## **CONTACT:**

John Hoggett  
Phone 8356 2700 Mobile 0431 411 004  
Email [jhoggett@rwebay.com.au](mailto:jhoggett@rwebay.com.au)

**R&W**

Elizabeth Bay | Potts Point  
8356 2700