



## 17 Tusculum Street POTTS POINT, NSW

5 bed | 3 bath | 2 car

**R&W**

- \* Generously sized, finished to perfection and ultra-versatile in functionality
- \* Positive energy flow is enhanced by creative design and soothing colours
- \* Large open formal living/dining with travertine verandah & a Juliette balcony
- \* Expansive casual living/dining with glass/oak walls, heated travertine floors
- \* Steel/Travertine/Corian eat-in kitchen, Miele gas appliances, abundant b/ins
- \* Master wing with huge bedroom, vaulted ceiling, julie...

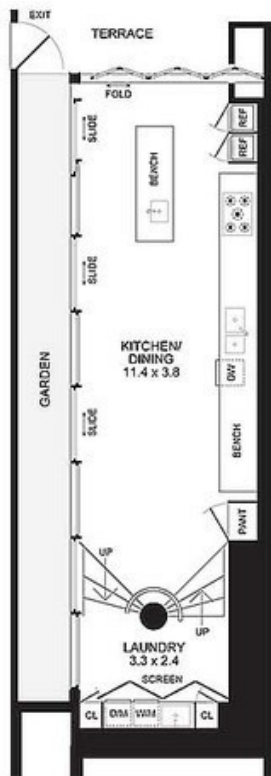
**[rwebay.com.au/1490419](http://rwebay.com.au/1490419)**

Jason Boon 0418 671 494

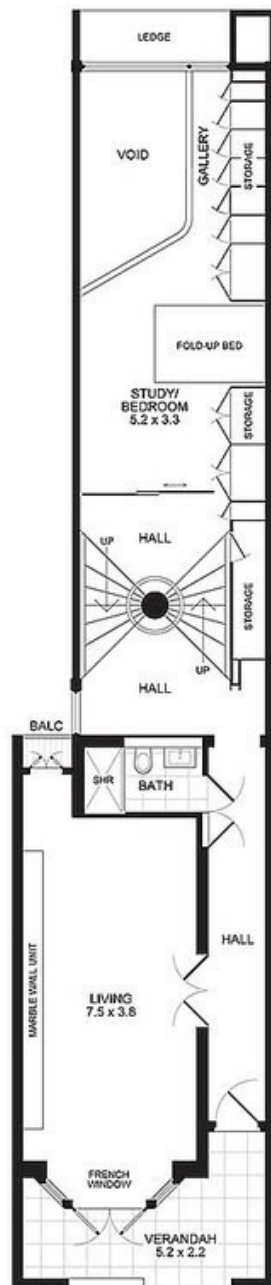
Geoff Cox 0418 231 004

**Proudly Richardson&Wrench**

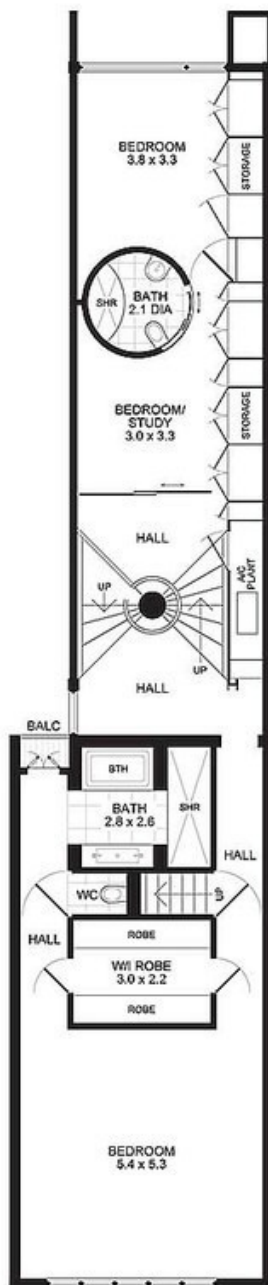
Richardson & Wrench Elizabeth Bay / Potts Point  
02 8356 2700



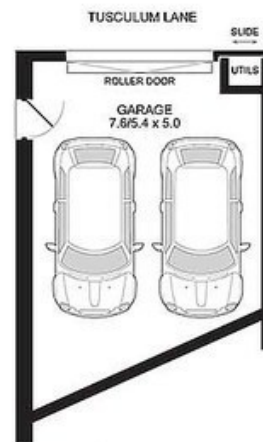
**LEVEL ONE**  
Scale 1cm = 1m (approx)



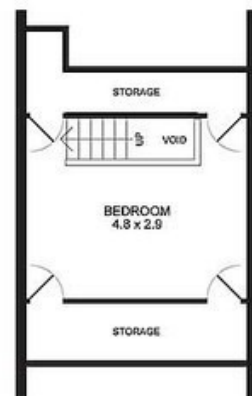
**LEVEL TWO**  
Scale 1cm = 1m (approx)



**LEVEL THREE**  
Scale 1cm = 1m (approx)



**GARAGE**  
Scale 1cm = 1m (approx)



**LEVEL FOUR**  
Scale 1cm = 1m (approx)



0 1 2 3 4 5  
metres

**PROMOPLANS ...adding REAL value!**  
E&OE. This plan is for illustrative purposes only and dimensions are approximate. It does not constitute part of any legal document or commercial contract for the sale or lease of this property.  
COPYRIGHT © 2013 PROMOPLANS 02 5372 7111  
Warning: Usage restricted under the Copyright Act

**17 TUSCULUM STREET  
POTTS POINT**

**Contact**  
Jason Boon  
Phone: 8356 2700 Mobile: 0418 671 494  
Email: jboon@rwebay.com.au  
Geoff Cox  
Phone: 8356 2734 Mobile: 0418 231 004  
Email: gcox@rwebay.com.au

**R&W**

Elizabeth Bay / Potts Point  
8356 2700