



## 82/103 Victoria Street POTTS POINT, NSW

1 bed | 1 bath | 1 car

**R&W**

\* Level entry walkway from street to secure main lift lobby and level covered access with lift from security parking

\* Apartment features central foyer area, spacious open dining and living zones with bi-folds to northerly viewdeck for perfect indoor/outdoor living

\* CaesarStone open kitchen with breakfast island, Miele appliances (cooktop, main pyrolytic oven, steam oven, fully integrated dishwasher), Panasonic microwave, quality cabinetry, soft closing drawers, integrated fridge space

\* Queen size bedroom with large window, ceiling fan, b...

[rwebay.com.au/1516708](http://rwebay.com.au/1516708)

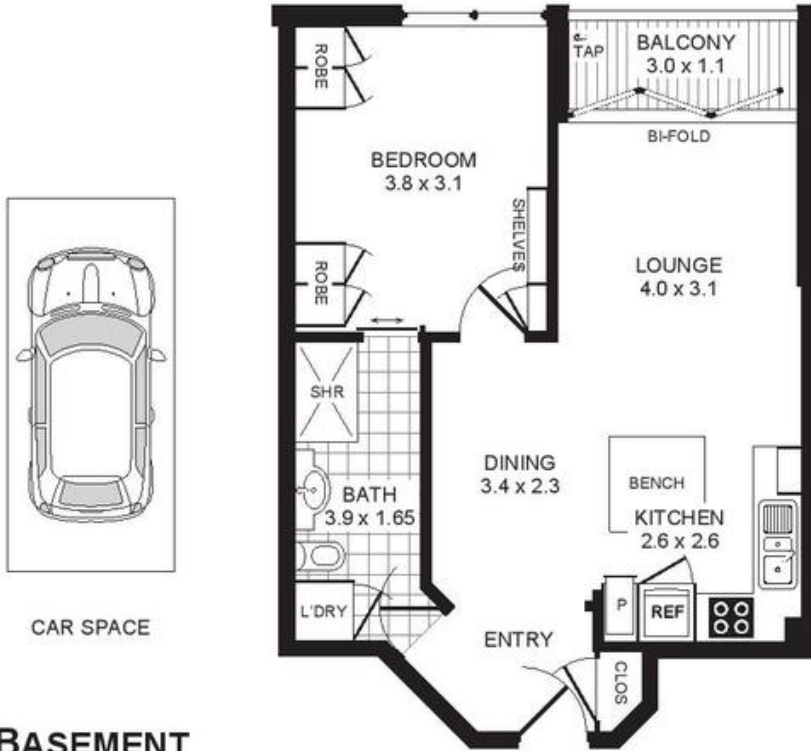
Jason Boon 0418 671 494

Geoff Cox 0418 231 004

**Proudly Richardson&Wrench**

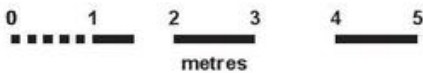
Richardson & Wrench Elizabeth Bay / Potts Point  
02 8356 2700

APARTMENT 82/103 VICTORIA STREET  
POTTS POINT



CAR SPACE

FLOOR PLAN



**PROMOPLANS ...adding REAL value!**

E&OE This plan is for illustrative purposes only and dimensions are approximate. It does not constitute part of any legal document or commercial contract for the sale or lease of this property.

COPYRIGHT © 2013 PROMOPLANS 02 9572 7111  
Warning: Usage restricted under the Copyright Act

Contact

**Jason Boon**

Phone: 8356 2700 Mobile: 0418 671 494  
Email: jboon@rwebay.com.au

**Geoff Cox**

Phone: 8356 2734 Mobile: 0418 231 004  
Email: gcox@rwebay.com.au

**R&W**

Elizabeth Bay | Potts Point  
8356 2700