



35/103 Victoria Street POTTS POINT, NSW

1 bed | 1 bath

Light-filled and unexpectedly spacious, this one-bedroom city pad is quietly set well back and hidden from the cosmopolitan streetscape. Enjoying an elevated outlook over the leafy district and a bonus glimpse of the nearby harbour, the airy open plan layout is ready to move in, rent out, or redecorate to taste. Located on the 8th floor of Victoria Point, an ever-popular security tower, the sought after building is peaceful and private yet convenient. Ideal for investors and owner-occupiers, this apartment is just a short walk to cafes, supermarkets, shops, bus routes, train station, parks and Woolloomooloo Bay - even the CBD.

...

R&W

rwebay.com.au/1570587

Greg McKinley 0412 044 822

Andrew Hoggett 0412 208 614

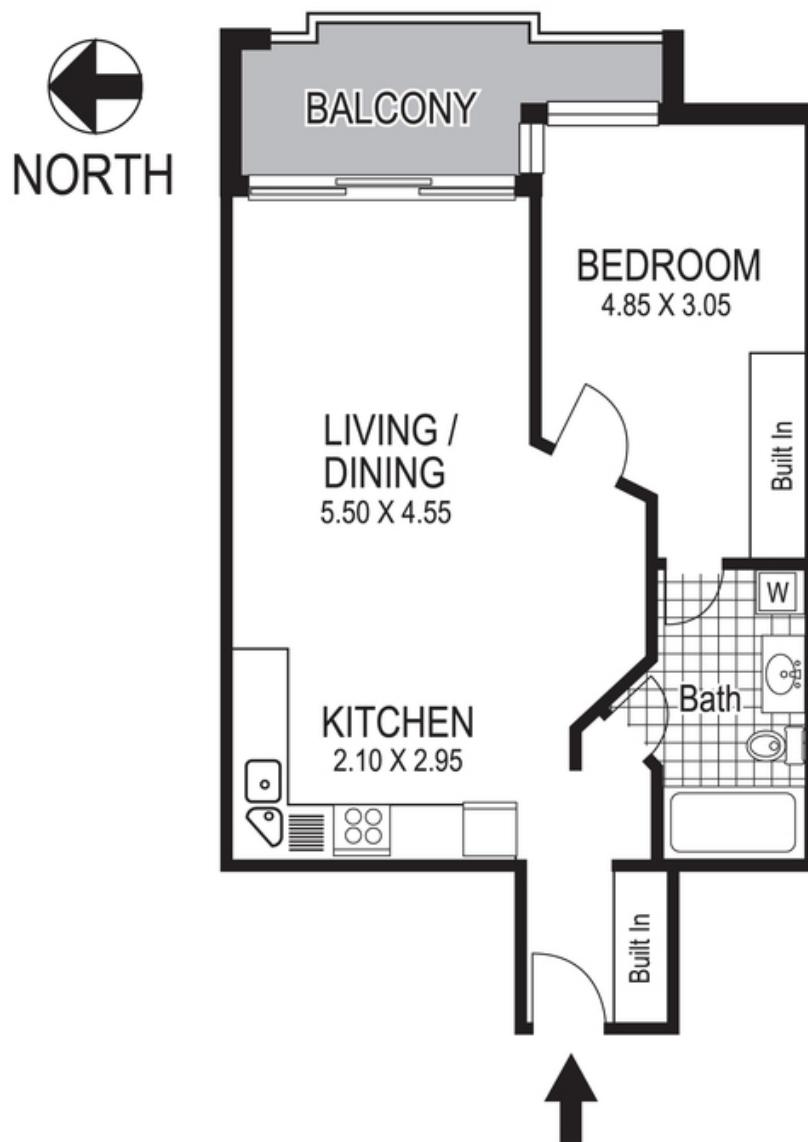
Proudly Richardson&Wrench

Richardson & Wrench Elizabeth Bay / Potts Point
02 8356 2700

Contact:
Greg McKinley
0412 044 822

Contact:
Andrew Hoggett
0412 208 614

R&W | The best reputation
in real estate
Elizabeth Bay / Potts Point



35 / 103 Victoria Street POTTS POINT
"VICTORIA POINT"

Plans shown are for presentation purposes only and are not part of any legal document or title and are subject to errors, omissions, inaccuracies and they should not be used as sole and/or accurate reference for purchasing decision. Interested parties should make their own enquiries using other sources supplied. Dimensions shown on the plans are approximate values in length by width. Illustration by Raoul Isidro 04111 28500.