



## 20/3 Clement Street RUSHCUTTERS BAY, NSW

2 bed | 1 bath | 1 car

**R&W**

[rwebay.com.au/1586006](http://rwebay.com.au/1586006)

R&W Elizabeth Bay Potts Point

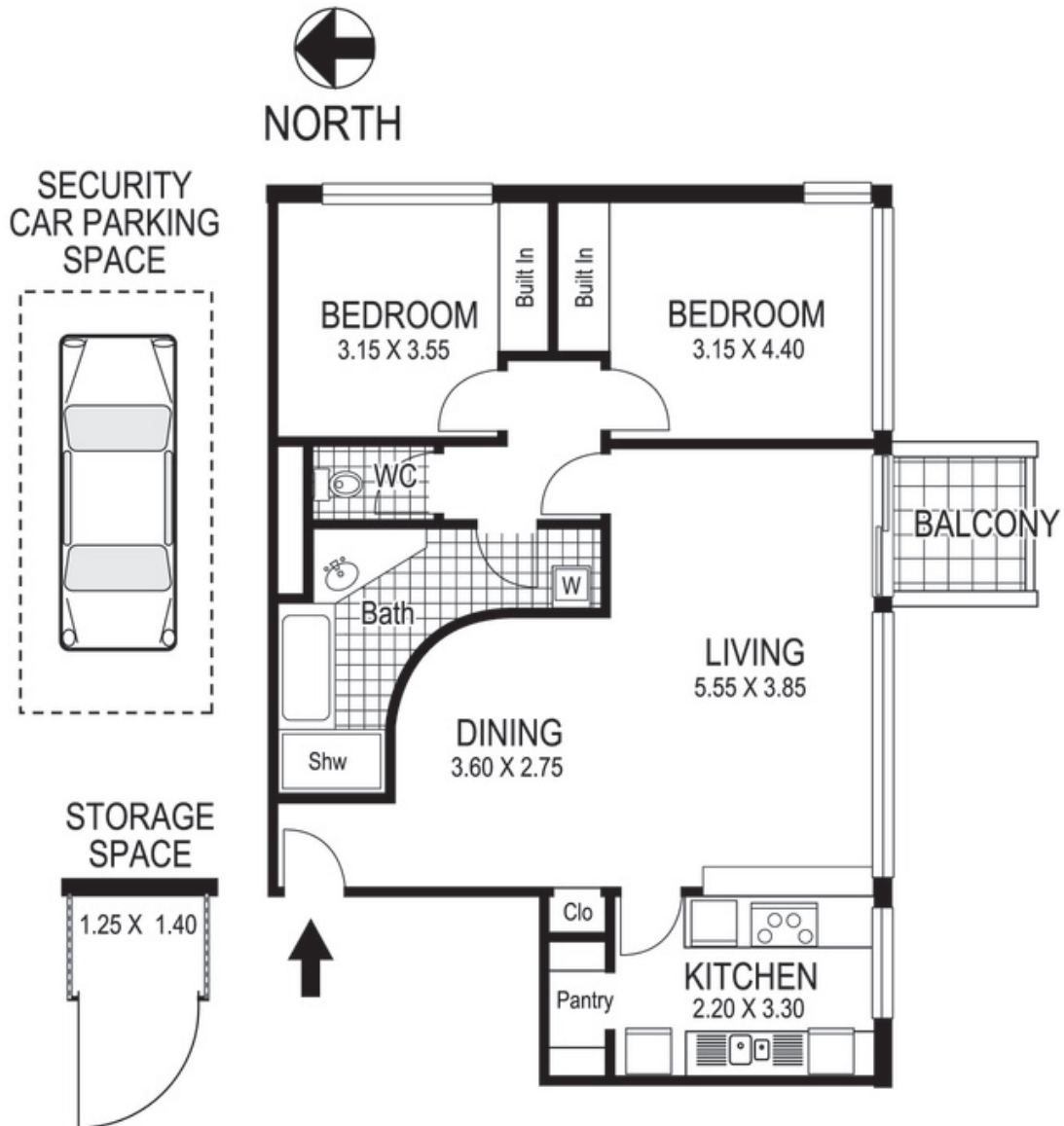
**Proudly Richardson&Wrench**

Richardson & Wrench Elizabeth Bay / Potts Point  
02 8356 2700

- \* Level entry via choice of 2 lifts from secure lobby or secure parking and storage cage
- \* 5th floor lift lobby shared by only 3 other apartments
- \* Foyer area, spacious open plan dining and living areas flow to idyllic private balcony
- \* Good size kitchen with servery/breakfast bar, ceramic hob, oven and a walk-in pantry
- \* 2 double bedrooms, both with built-ins
- \* Fully tiled bathroom with bath, separate shower, internal laundry and a powder room
- \* Spacious layout features wall-to-wall glass, lots of ...

Contact:  
Nicholas Tsaouis  
0419 777 717

**R&W** | The best reputation  
in real estate  
Elizabeth Bay/Potts Point



## 20 / 3 Clement Street RUSHCUTTERS BAY

Plans shown are for presentation purposes only and are not part of any legal document or title and are subject to errors, omissions, inaccuracies and they should not be used as sole and/or accurate reference for purchasing decision. Interested parties should make their own enquiries using other sources supplied. Dimensions shown on the plans are approximate values in length by width. Illustration by Raoul Isidro 04111 28500.

Balcony View Panorama

Click to view ↓

<https://plus.google.com/u/0/photos/115983540977680943455/albums/6015441218255949537/6018450902716018786?pid=6018450902716018786&oid=115983540977680943455>

Street View Panorama

Click to view ↓

<https://plus.google.com/u/0/photos/115983540977680943455/albums/6015441218255949537/6018452176294069378?pid=6018452176294069378&oid=115983540977680943455>

Every precaution has been taken to establish accuracy of the information in this brochure but does not constitute any representation by the vendor or agent.

**R&W**