



39/16-20 Kings Cross Road POTTS POINT, NSW

3 bed | 1 bath | 1 car

R&W

- * Level lift access via gated marble portico and marble security lobby
- * Welcoming central entrance foyer provides a great sense of arrival
- * Bay-fronted open plan living/dining room leads out to balcony with bonus city skyline glimpses
- * 3 bedrooms, master with built-ins, 3rd bedroom/study or separate dining with balcony access
- * Stylish modern marble/glass mosaic bathroom with bathtub, internal laundry facility
- * Streamlined retro kitchen with stainless steel applia...

rwebay.com.au/1601985

Jason Boon 0418 671 494

Geoff Cox 0418 231 004

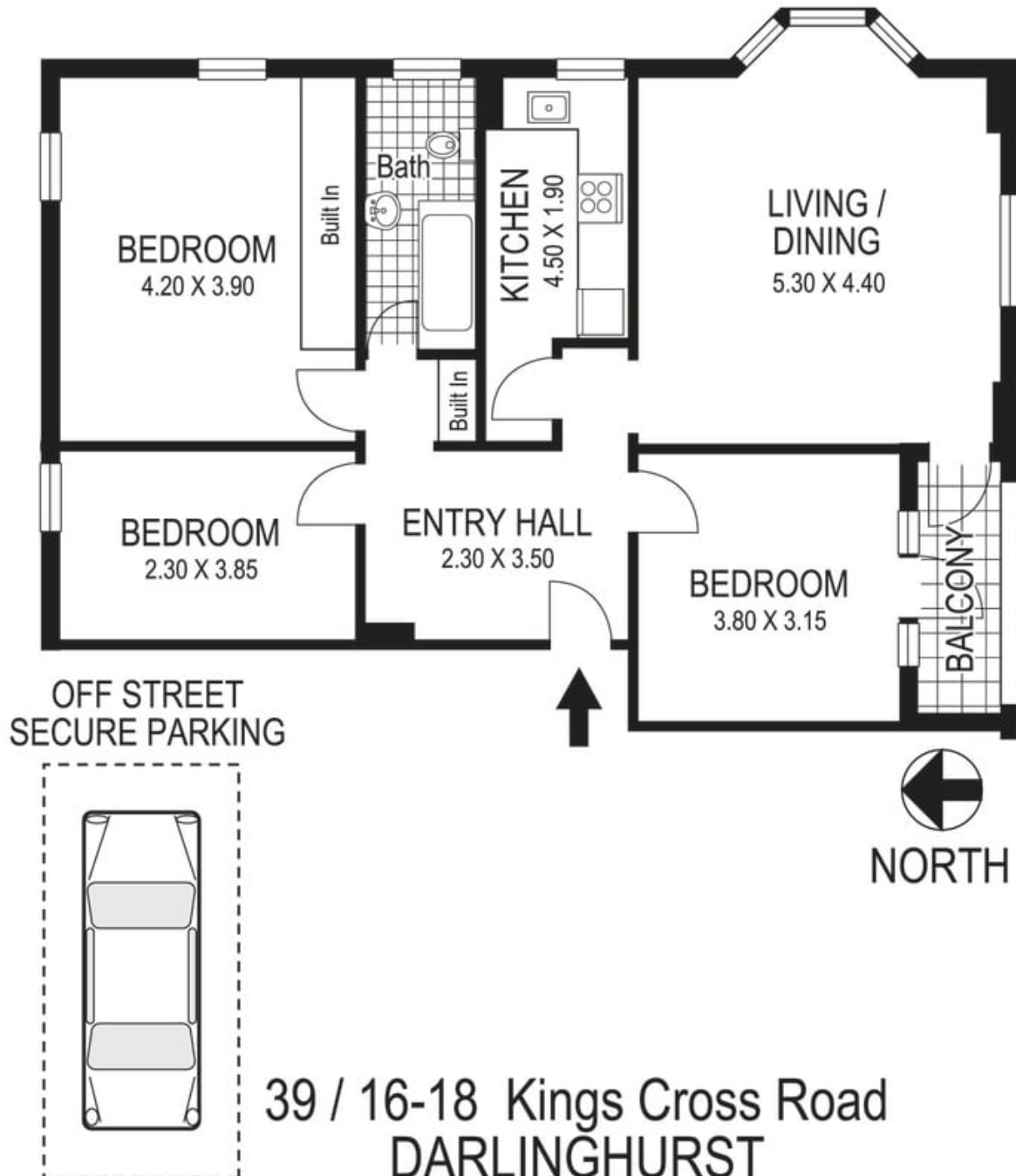
Proudly Richardson&Wrench

Richardson & Wrench Elizabeth Bay / Potts Point
02 8356 2700

Contact:
Jason Boon
0418 671 494

Contact:
Geoff Cox
0418 231 004

R&W | The best reputation
in real estate
Elizabeth Bay / Potts Point



Plans shown are for presentation purposes only and are not part of any legal document or title and are subject to errors, omissions, inaccuracies and they should not be used as sole and/or accurate reference for purchasing decision. Interested parties should make their own enquiries using other sources supplied. Dimensions shown on the plans are approximate values in length by width. Illustration by Raoul Isidro 04111 28500.

Street View Panorama

Click to view ↓

<https://plus.google.com/u/0/photos/115983540977680943455/albums/6015441218255949537/6020948479439376082?pid=6020948479439376082&oid=115983540977680943455>

Every precaution has been taken to establish accuracy of the information in this brochure but does not constitute any representation by the vendor or agent.

R&W