



## 6/38-40 Kings Cross Road POTTS POINT, NSW

1 bed | 1 bath

**R&W**

Enjoy as is or add your creative flair to maximise the comfortable layout of this remarkable 1-bedroom apartment. Quietly first floor positioned in a well maintained classic c.1920's security strata block of 12, this character-filled gem offers old-world charm with great potential for a chic contemporary renovation. Set in a sought after locale bordering the trendy precincts of Potts Point, Elizabeth Bay and Rushcutters Bay, it's an easy stroll to cafes, shops, supermarkets, train station, express buses, numerous parks and the harbour foreshore. Also just minutes to the CBD, this apartment is an ideal first home or investment.

...

**[rwebay.com.au/1606742](http://rwebay.com.au/1606742)**

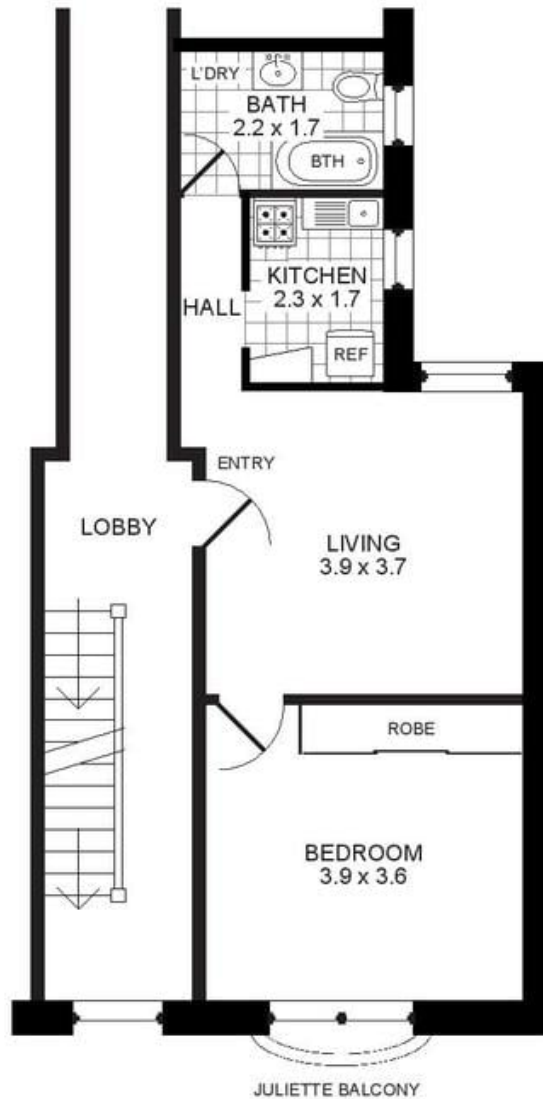
Geoff Cox 0418 231 004

Jason Boon 0418 671 494

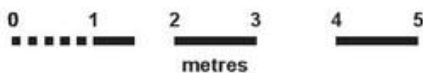
**Proudly Richardson&Wrench**

Richardson & Wrench Elizabeth Bay / Potts Point  
02 8356 2700

# APARTMENT 6/38-40 KINGS CROSS ROAD POTTS POINT



**FLOOR PLAN**



**PROMOPLANS ...adding REAL value!**

E&OE This plan is for illustrative purposes only and dimensions are approximate. It does not constitute part of any legal document or commercial contract for the sale or lease of this property.

COPYRIGHT © 2013 PROMOPLANS 02 9572 7111  
Warning: Usage restricted under the Copyright Act

**Contact**

**Jason Boon**

Phone: 8356 2700 Mobile: 0418 671 494  
Email: jboon@rwebay.com.au

**Geoff Cox**

Phone: 8356 2734 Mobile: 0418 231 004  
Email: gcox@rwebay.com.au

**R&W**

Elizabeth Bay / Potts Point  
8356 2700