



23/101 Macleay Street POTTS POINT, NSW

1 bed | 1 bath

R&W

Light-filled and unexpectedly spacious at 32m2 with a separate bed alcove, this city pad is quietly set well back and hidden from the cosmopolitan streetscape. Enjoying an elevated outlook over the rear of the block, the airy open plan layout is ideal for the 1st home buyer or astute investor. Located on the 2nd floor of an ever-popular security building in the heart of Potts Point just moments to cafes, supermarkets, shops, bus routes, train station, parks and Woolloomooloo Bay - even the CBD.

rwebay.com.au/1628277

Luke McDonnell 0418 844 110

Angelo Bouras 0401 658 653

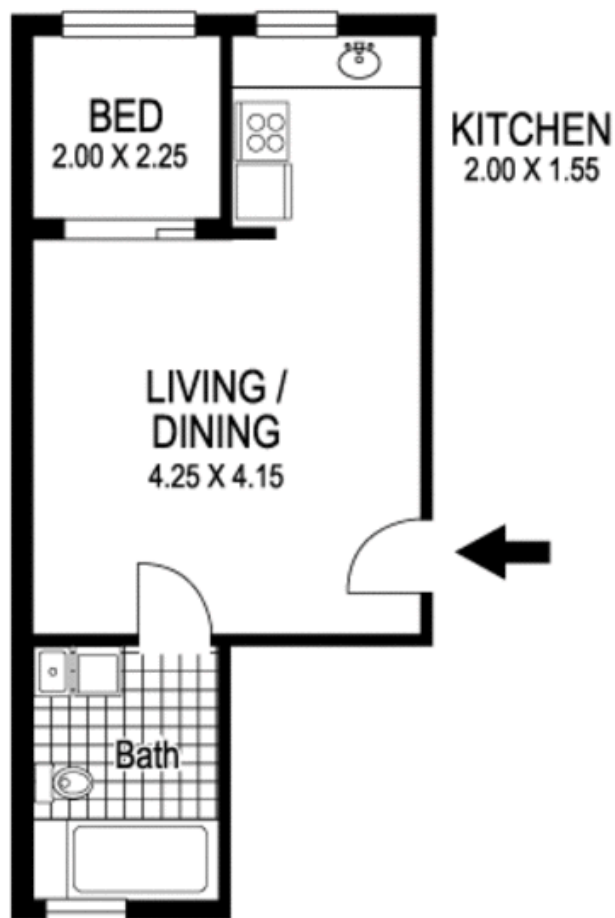
Proudly Richardson&Wrench

Richardson & Wrench Elizabeth Bay / Potts Point
02 8356 2700

R&W | The best reputation
in real estate
Elizabeth Bay/Potts Point

Contact:
Luke McDonnell
0418 844 110

Contact:
Angelo Bouras
0401 658 653



**23 / 101 Macleay Street
POTTS POINT**

Plans shown are for presentation purposes only and are not part of any legal document or title and are subject to errors, omissions, inaccuracies and they should not be used as sole and/or accurate reference for purchasing decision. Interested parties should make their own enquiries using other sources supplied. Dimensions shown on the plans are approximate values in length by width. Illustration by Raoul Isidro 04111 26500.