



## 36/20-22 Springfield Avenue POTTS POINT, NSW

1 bed | 1 bath

**R&W**

Sunny approx 36m2 upper floor studio in popular Sandringham. With a quiet treetop aspect the apartment has easy access to cafes and transport.

- Generous open plan living with fabulous storage
- Decorative details and high ceilings
- Separate dining/study zone
- Modern gas kitchen
- Lovely bathroom with laundry facility
- Private and leafy aspect

[rwebay.com.au/1699384](http://rwebay.com.au/1699384)

Greg McKinley 0412 044 822

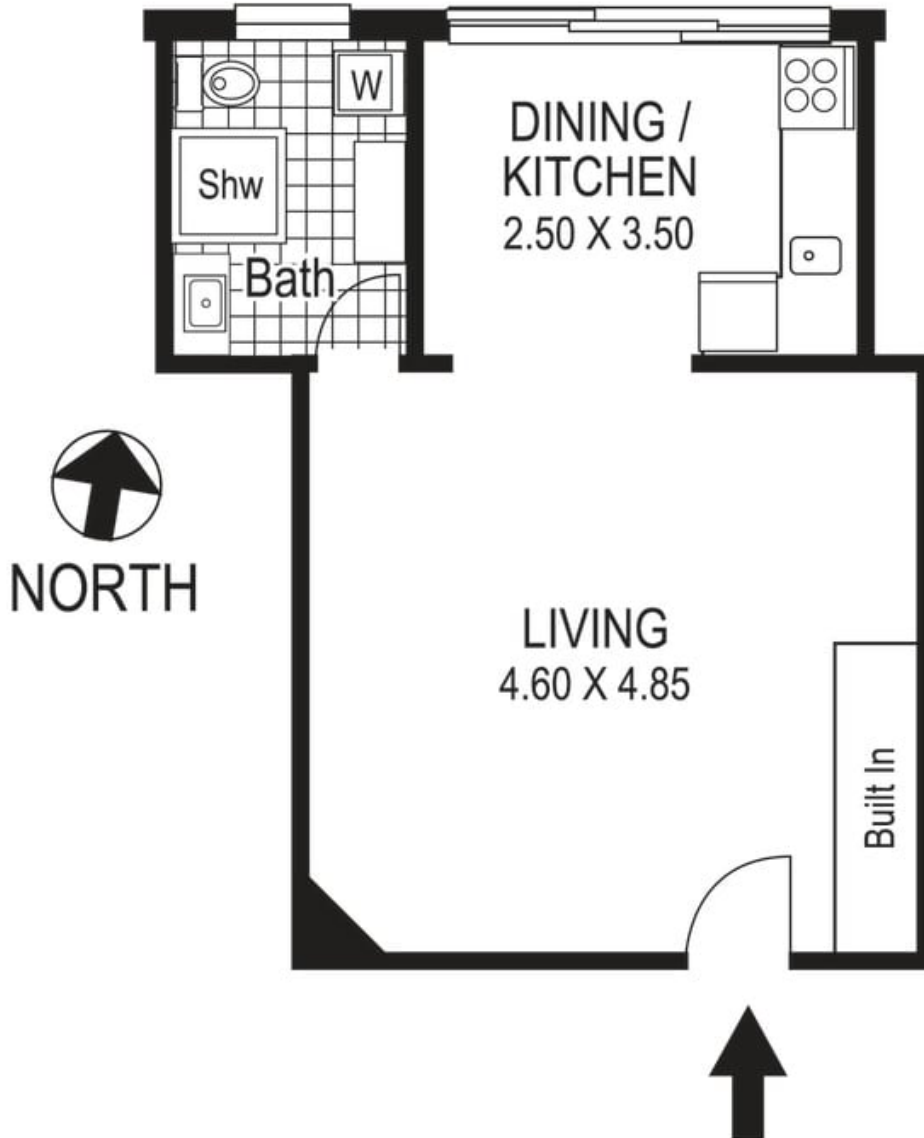
Andrew Hoggett 0412 208 614

**Proudly Richardson&Wrench**

Richardson & Wrench Elizabeth Bay / Potts Point  
02 8356 2700

Contact:  
Greg McKinley  
0412 044 822

**R&W** | The best reputation  
in real estate  
Elizabeth Bay / Potts Point



36 / 20-22 Springfield Avenue  
POTTS POINT  
*"SANDRINGHAM"*

Plans shown are for presentation purposes only and are not part of any legal document or title and are subject to errors, omissions, inaccuracies and they should not be used as sole and/or accurate reference for purchasing decision. Interested parties should make their own enquiries using other sources supplied. Dimensions shown on the plans are approximate values in length by width. Illustration by Raoul Isidro 04111 28500.

Every precaution has been taken to establish accuracy of the information in this brochure but does not constitute any representation by the vendor or agent.

**R&W**