



269 Victoria Street DARLINGHURST, NSW

1 bed | 1 bath

First time offered in over 50 years, affordable price range.
An excellent work/home property or solid inner city investment
Excellent exposure, Hi-visibility location with busy pedestrian traffic

Features include:

- . Zoned Mixed residential / commercial usage
- . Pedestrian rear lane access from Hayden Place
- . Land size 74sqm with a 5metre frontage
- . Ground floor is a fully operational cafe/take-away shop

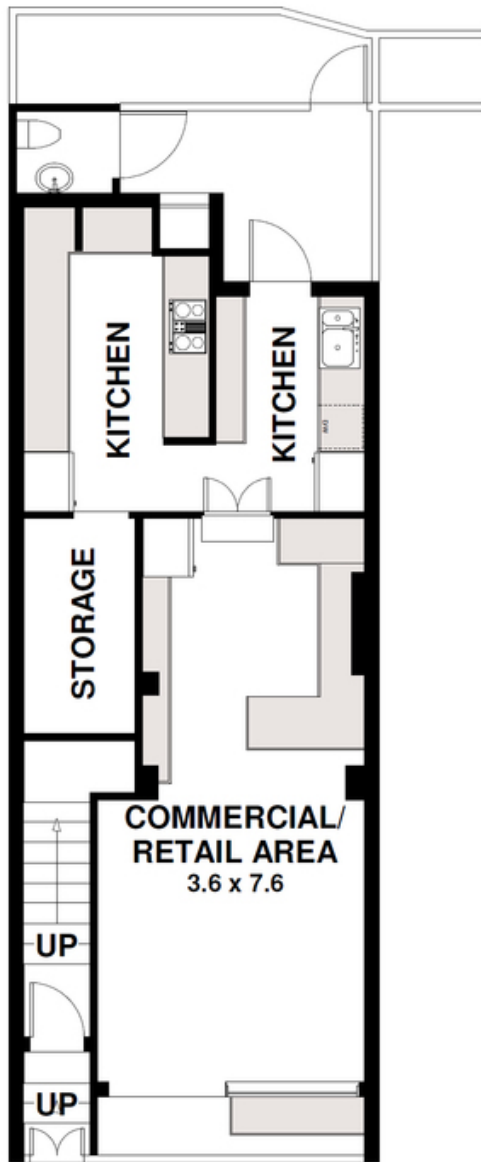
R&W

rwebay.com.au/1707305

Rod Angus 0419 599 888

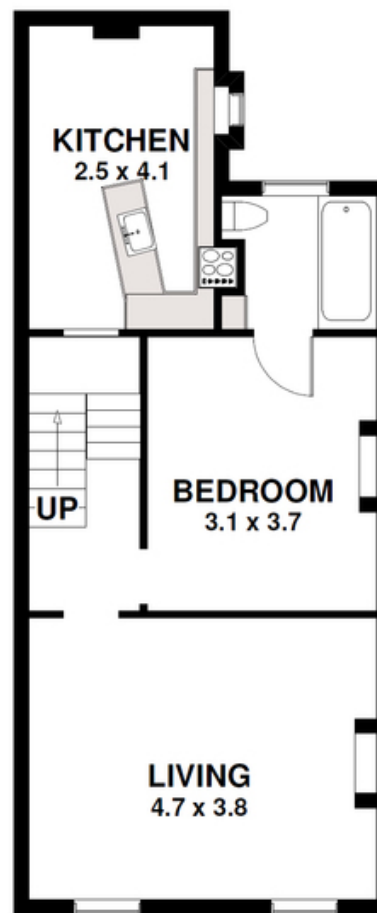
Proudly Richardson & Wrench

Richardson & Wrench Elizabeth Bay / Potts Point
02 8356 2700



GROUND FLOOR

ACCESS TO
HAYDEN
PLACE



FIRST FLOOR

269 Victoria Street, Darlinghurst

DISCLAIMER CLAUSE The information contained in this brochure has been furnished to us by the vendors. The plan is provided as a guide only. While we trust it to be correct, we cannot guarantee its accuracy. Sizes and areas indicated are approximate only. We have not verified whether or not that information is accurate and do not have any belief one way or another in its accuracy. We do not accept any responsibility to any person for its accuracy and do no more than pass it on. All interested parties should make and rely on their own enquiries in order to determine whether or not this information is in fact accurate.