



402/5 Manning Street POTTS POINT, NSW

2 bed | 1 bath

R&W

Set quietly above the street in one of Potts Point's most desirable locations this chic apartment in classic Wychbury is spacious and light and has been renovated to capture the essence of inner city living. Just a lift ride from popular cafes, restaurants, shopping and nightlife together with easy access to parks, transport and the harbour make this apartment ideally situated to access the best that Potts Point has to offer.

* 2 double bedrooms, main with built in robes and northerly aspect

* Renovated Kitchen with stone bench tops and stainless...

rwebay.com.au/1724804

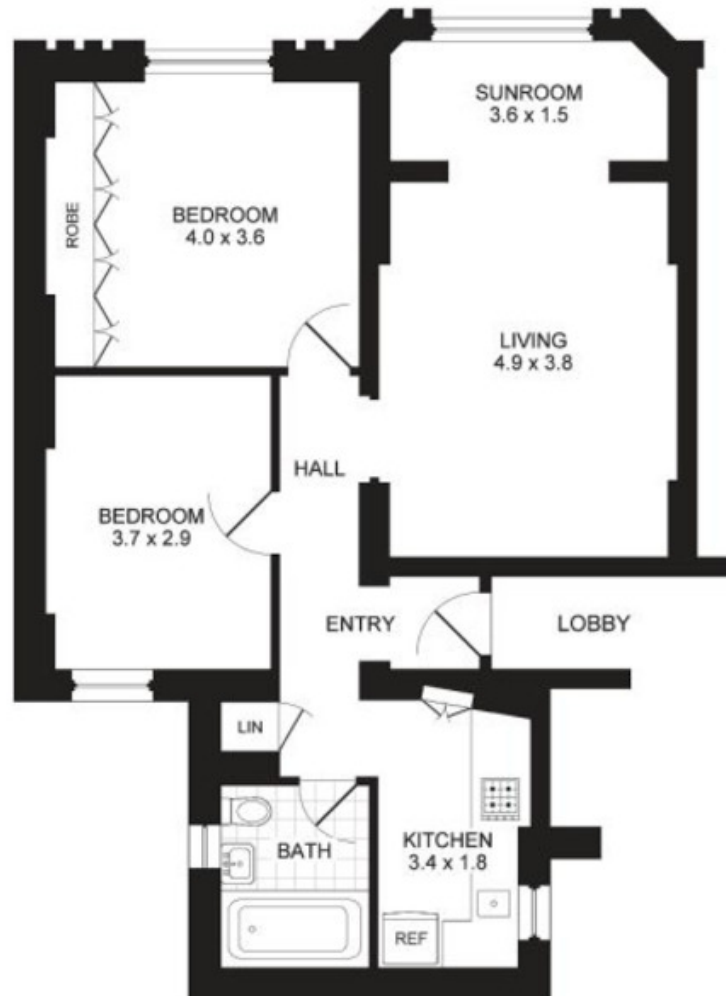
Jason Boon 0418 671 494

Geoff Cox 0418 231 004

Proudly Richardson&Wrench

Richardson & Wrench Elizabeth Bay / Potts Point
02 8356 2700

APARTMENT 402/5 MANNING STREET POTTS POINT



FLOOR PLAN



PROMOPLANS ...adding REAL value!

ESOE This plan is for illustrative purposes only and dimensions are approximate. It does not constitute part of any legal document or commercial contract for the sale or lease of this property.

COPYRIGHT © 2011 PROMOPLANS 02 9572 7111
Warning: Usage restricted under the Copyright Act

R&W Elizabeth Bay
Potts Point