



## 10/95 Palmer Street WOOLLOOMOOLOO, NSW

2 bed | 1 bath

**R&W**

- \* Secure access via sunny large central landscaped courtyard
- \* Generous open plan living/dining areas, designer fireplace
- \* Stacking glass doors open to northerly private decked garden with built-in bbq, integrated dog kennel, plus a wall-mounted vertical garden system growing lush herbs and veges
- \* CaesarStone open plan kitchen, ceramic hob/stove, integrated fridge, dishwasher, ample storage
- \* 2 double bedrooms, both with extensive built-in storage
- \* Stylish bathroom with deep bath and high quality fittings

[rwebay.com.au/1734879](http://rwebay.com.au/1734879)

Geoff Cox 0418 231 004

Jason Boon 0418 671 494

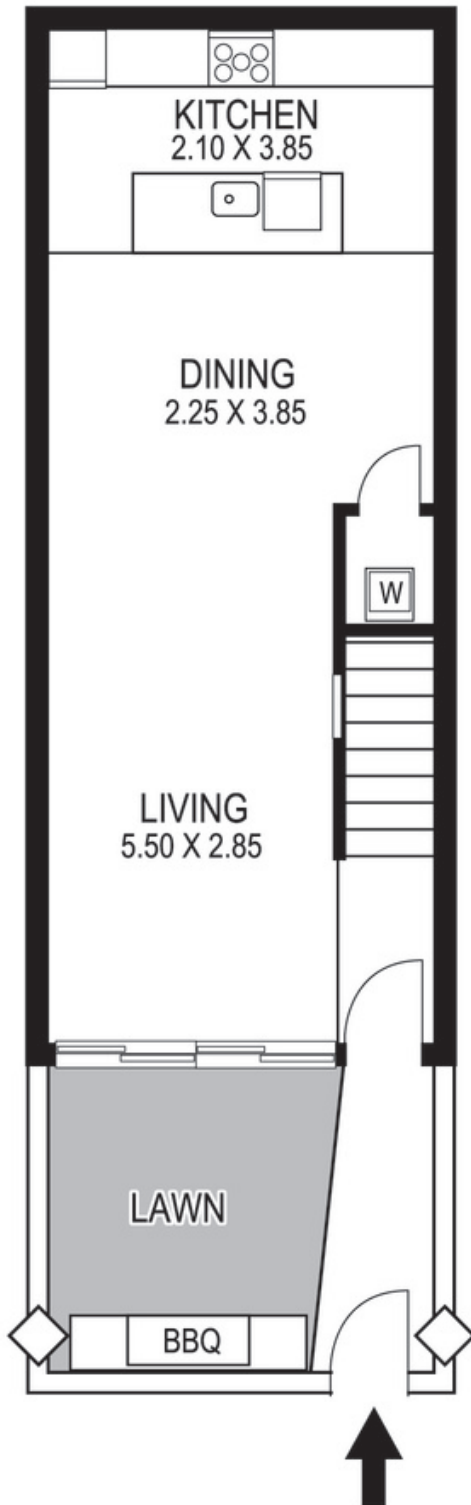
**Proudly Richardson&Wrench**

Richardson & Wrench Elizabeth Bay / Potts Point  
02 8356 2700

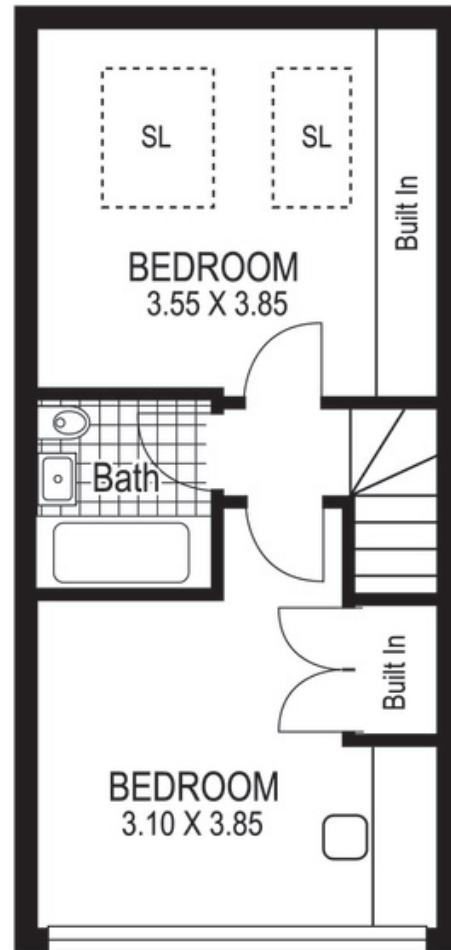
Contact:  
Jason Boon  
0418 671 494

Contact:  
Geoff Cox  
0418 231 004

**R&W** | The best reputation  
in real estate  
**Elizabeth Bay / Potts Point**



Ground Floor



First Floor



NORTH

Plans shown are for presentation purposes only and are not part of any legal document or title and are subject to errors, omissions, inaccuracies and they should not be used as sole and/or accurate reference for purchasing decision. Interested parties should make their own enquiries using other sources supplied. Dimensions shown on the plans are approximate values in length by width. Illustration by Raoul Isidro 04111 28500.

10 / 95 Palmer Street WOOLLOOMOOLOO