



## 5/11 Springfield Avenue POTTS POINT, NSW

2 bed | 1 bath | 1 car

# R&W

- \* Level access via the magnificent walnut paneled security lobby sets the tone
- \* Entrance hall, large open living room, separate dining room or study/sunroom
- \* 2 spacious bedrooms, both with built-ins, master with bay-fronted study area
- \* Stylish contemporary designer bathroom with a deep bath and marble floor
- \* CaesarStone deluxe kitchen, Ilve gas hob, oven, Miele dishwasher, walk-in pantry
- \* High ceilings, polished timber floors, classic joiner...

[rwebay.com.au/1736070](http://rwebay.com.au/1736070)

Jason Boon 0418 671 494

Geoff Cox 0418 231 004

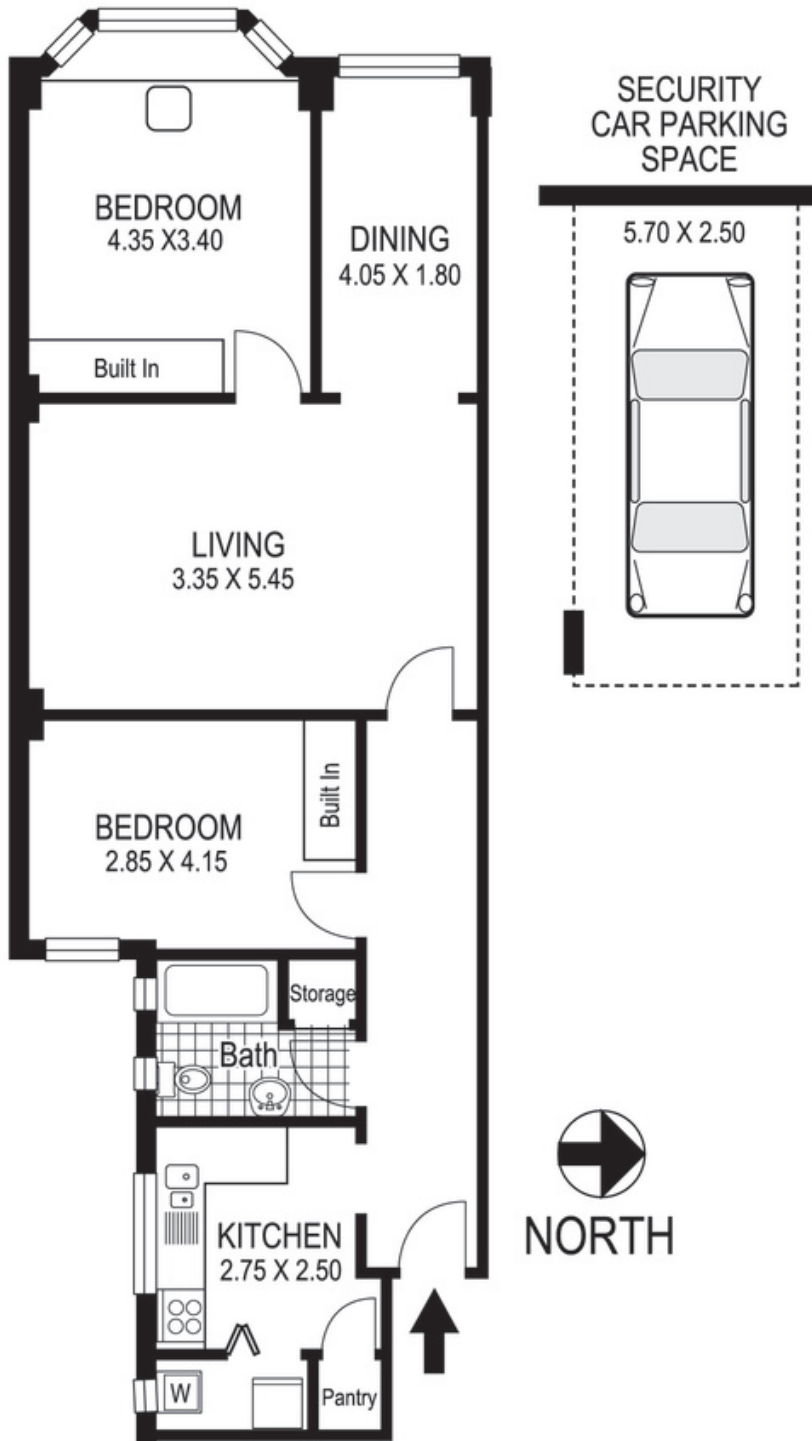
**Proudly Richardson&Wrench**

Richardson & Wrench Elizabeth Bay / Potts Point  
02 8356 2700

Contact:  
Jason Boon  
0418 671 494

Contact:  
Geoff Cox  
0418 231 004

**R&W** | The best reputation  
in real estate  
Elizabeth Bay/Potts Point



## 5 / 11 Springfield Avenue POTTS POINT "CARISBROOKE"

Plans shown are for presentation purposes only and are not part of any legal document or title and are subject to errors, omissions, inaccuracies and they should not be used as sole and/or accurate reference for purchasing decision. Interested parties should make their own enquiries using other sources supplied. Dimensions shown on the plans are approximate values in length by width. Illustration by Raoul Isidro 04111 28500.

Every precaution has been taken to establish accuracy of the information in this brochure but does not constitute any representation by the vendor or agent.

**R&W**