



8/40a-42 Macleay Street POTTS POINT, NSW

3 bed | 2 bath | 1 car

R&W

- * Northerly sunlit layout, just one easy flight up via grand security lobby
- * Enormous private foyer features built-in library shelves, coffered ceiling
- * Large living room with bay window seat, built-ins, Jetmaster gas fireplace
- * Bay-fronted spacious separate dining room features marble gas fireplace
- * Master bedroom with sitting area, ample built-ins and a walk-in wardrobe
- * 2 designer bathrooms, main with deep bath, sep shower...

rwebay.com.au/1756000

Jason Boon 0418 671 494

Geoff Cox 0418 231 004

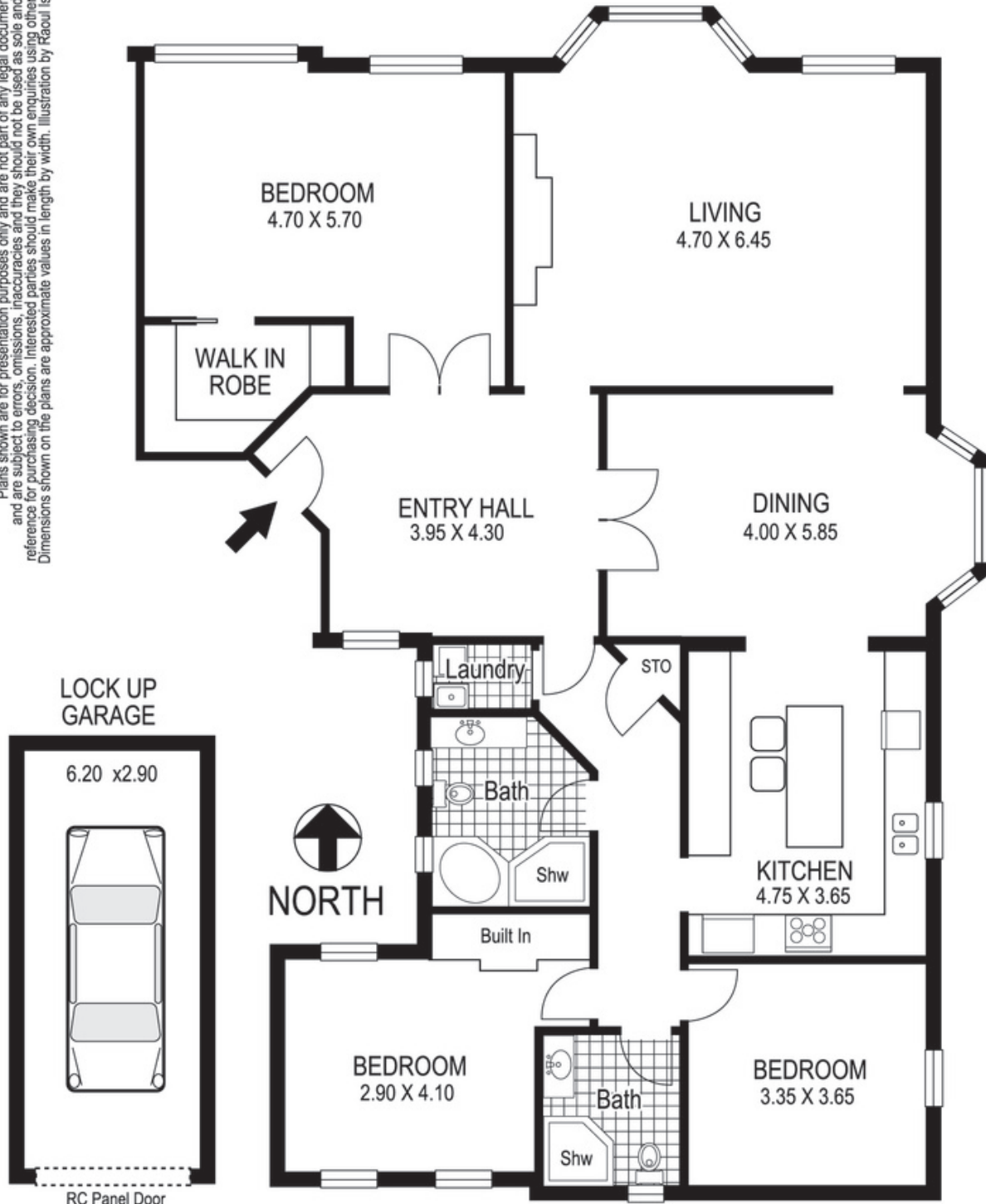
Proudly Richardson&Wrench

Richardson & Wrench Elizabeth Bay / Potts Point
02 8356 2700

Contact:
Jason Boon
0418 671 494

R&W | The best reputation
in real estate
Elizabeth Bay/Potts Point

Plans shown are for presentation purposes only and are not part of any legal document or title and are subject to errors, omissions, inaccuracies and they should not be used as sole and/or accurate reference for purchasing decision. Interested parties should make their own enquiries using other sources supplied. Dimensions shown on the plans are approximate values in length by width. Illustration by Raoul Isidoro 04111 28500.



8 40a-42 Macleay Street
POTTS POINT
"MANAR"

Every precaution has been taken to establish accuracy of the information in this brochure but does not constitute any representation by the vendor or agent.

R&W