



205/21 Elizabeth Bay Road ELIZABETH BAY, NSW

1.5 bed | 1 bath

R&W

- * Level access via security lift from elegant main lobby with concierge
- * Foyer area, built-ins, flexible open study/guest room or loft style double bedroom
- * King size master suite with garden access, walk-in robe and chic ensuite bathroom
- * Large open plan living/dining areas seamlessly flow to sunny private alfresco garden
- * Streamlined Miele Caesarstone kitchen, integrated Liebherr fridge, filtered water
- * Entertaining is easy thanks to such a clever layout a...

rwebay.com.au/1774787

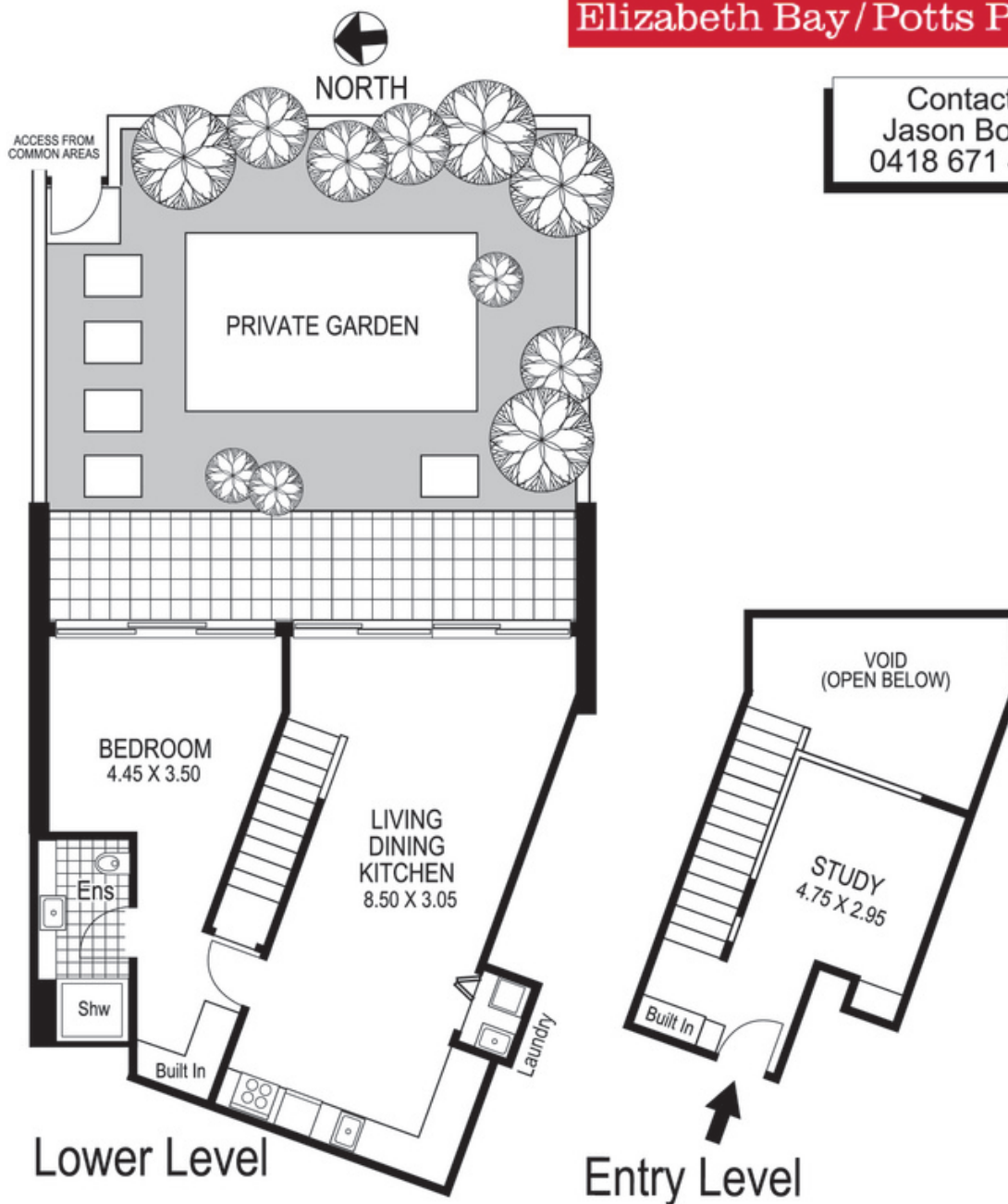
Jason Boon 0418 671 494

Geoff Cox 0418 231 004

Proudly Richardson&Wrench

Richardson & Wrench Elizabeth Bay / Potts Point
02 8356 2700

Contact:
Jason Boon
0418 671 494



205 / 21 Elizabeth Bay Road
ELIZABETH BAY
"ENCORE"

Plans shown are for presentation purposes only and are not part of any legal document or title and are subject to errors, omissions, inaccuracies and they should not be used as sole and/or accurate reference for purchasing decision. Interested parties should make their own enquiries using other sources supplied. Dimensions shown on the plans are approximate values in length by width. Illustration by Raoul Isidro 04111 28500.