



6/21B Billyard Avenue ELIZABETH BAY, NSW

2 bed | 1 bath

R&W

Set in the exclusive 'Billyard House' a classic well maintained security block of only 12 apartments, this perfectly proportioned apartment combines contemporary style with Art Deco grace. Luxurious in all aspects and located only metres to the harbour foreshore with Beare Park and McElhone Reserve almost at your door step, this home has been completely reinvented for stunning harbourside living.

* Entry foyer leading into well laid out living and dining with track lighting

* Stylish cleverly integrated kitchen with stone bench ...

rwebay.com.au/1777148

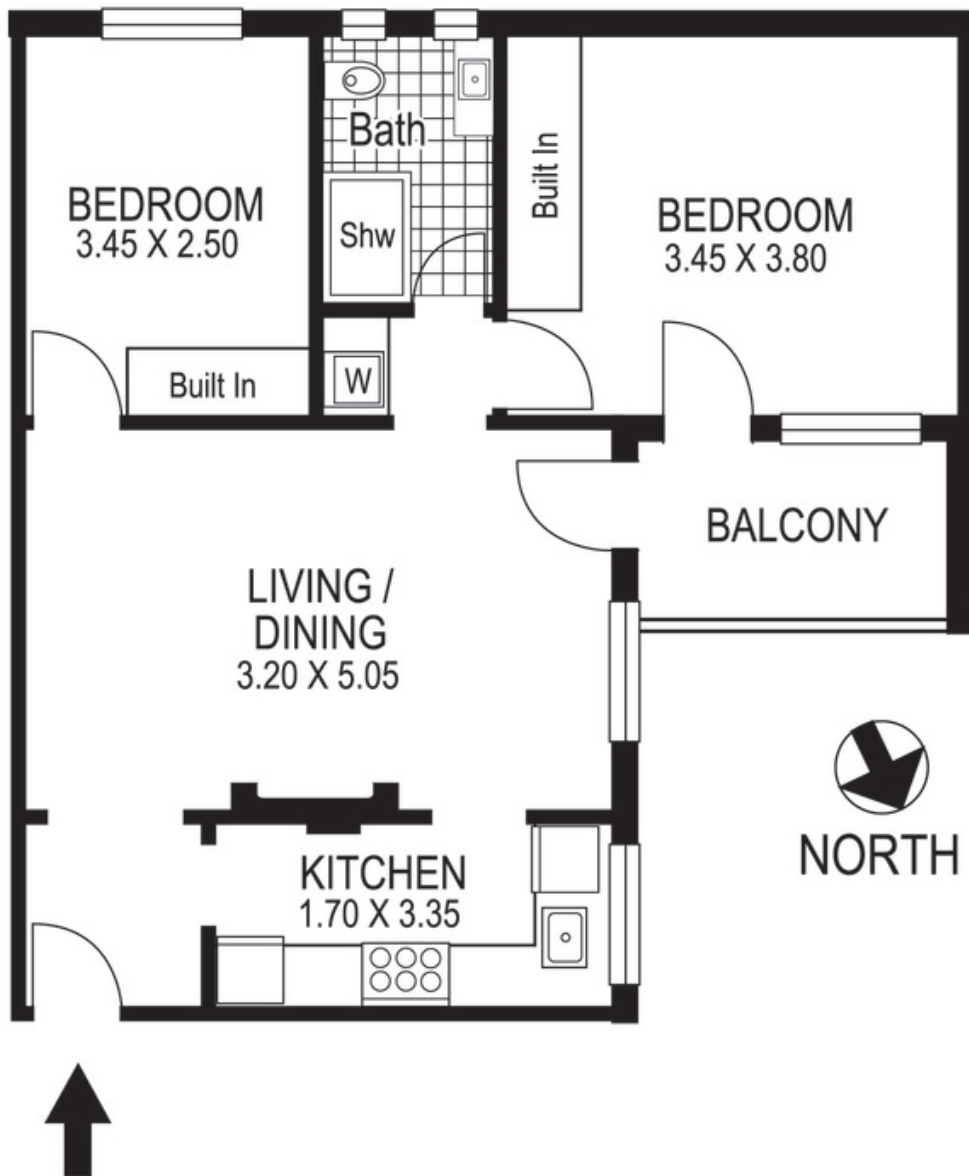
R&W Elizabeth Bay Potts Point

Proudly Richardson&Wrench

Richardson & Wrench Elizabeth Bay / Potts Point
02 8356 2700

Contact:
John Hogett
0431 411 004

R&W | The best reputation
in real estate
Elizabeth Bay/Potts Point



6 / 21B Billyard Avenue
ELIZABETH BAY
"BILLYARD HOUSE"

Plans shown are for presentation purposes only and are not part of any legal document or title and are subject to errors, omissions, inaccuracies and they should not be used as sole and/or accurate reference for purchasing decision. Interested parties should make their own enquiries using other sources supplied. Dimensions shown on the plans are approximate values in length by width. Illustration by Raoul Isidro 04111 28500.

Every precaution has been taken to establish accuracy of the information in this brochure but does not constitute any representation by the vendor or agent.

R&W