



28/11 Springfield Avenue POTTS POINT, NSW

3 bed | 2 bath

R&W

A once in a generation opportunity is available for those seeking the ultimate Potts Point lifestyle. For only the third time in 60 years you can own this penthouse defined by its grand proportions and elegant contemporary style. This is truly luxurious living with an inspired design and ultra-chic setting amidst the heart of cosmopolitan Potts Point. Set in one of this sought-after area's most desirable streets, leafy Springfield Avenue is graced by splendid classic apartment buildings, fashionable cafes and shops

* Generous open living with separate lounge and dining ...

rwebay.com.au/1806192

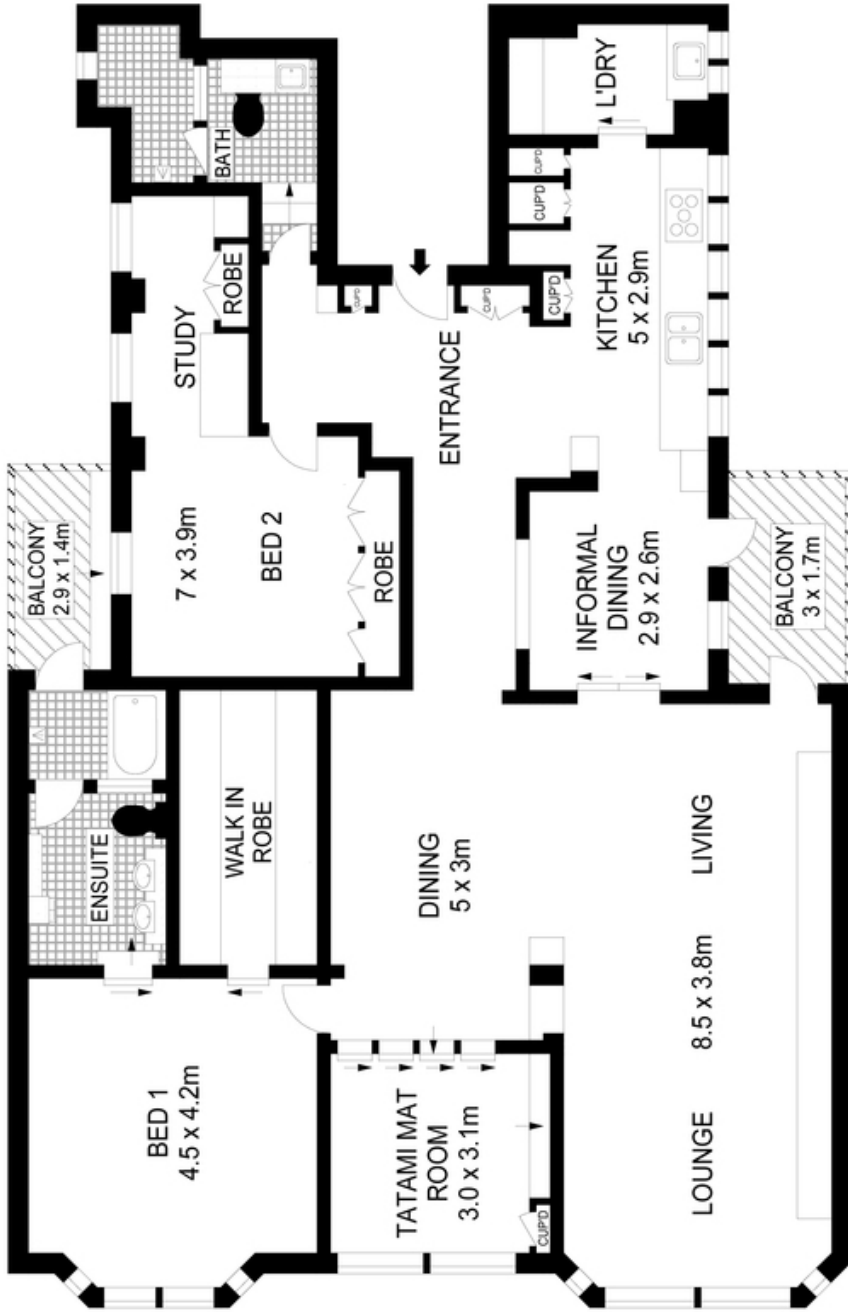
Jason Boon 0418 671 494

Geoff Cox 0418 231 004

Proudly Richardson&Wrench

Richardson & Wrench Elizabeth Bay / Potts Point
02 8356 2700

Every precaution has been taken to establish accuracy of the information in this brochure but does not constitute any representation by the vendor or agent.



TOP LEVEL



PLANS SHOWN ONLY INDICATIVE OF LAYOUT. DIMENSIONS ARE APPROXIMATE.



APPROX : 179m²

28/11 SPRINGFIELD AVENUE, CARISBROOKE PENTHOUSE

POTTS POINT