



14/103 Victoria Street POTTS POINT, NSW

1 bed | 1 bath

Light-filled and unexpectedly spacious, this one-bedroom city pad is quietly set well back and hidden from the cosmopolitan streetscape. Enjoying a private position, the airy open plan layout is ideal to move in, rent out, or redecorate to taste. Located on in the popular Victoria Point, an ever-popular security tower), the sought after building is peaceful and private yet convenient. This apartment is just a short walk to cafes, supermarkets, shops, bus routes, train station, parks and Woolloomooloo Bay - even the CBD.

* Open plan kitchen zone with induction cooktop, rangeh...

R&W

rwebay.com.au/1850389

Luke McDonnell 0418 844 110

Angelo Bouras 0401 658 653

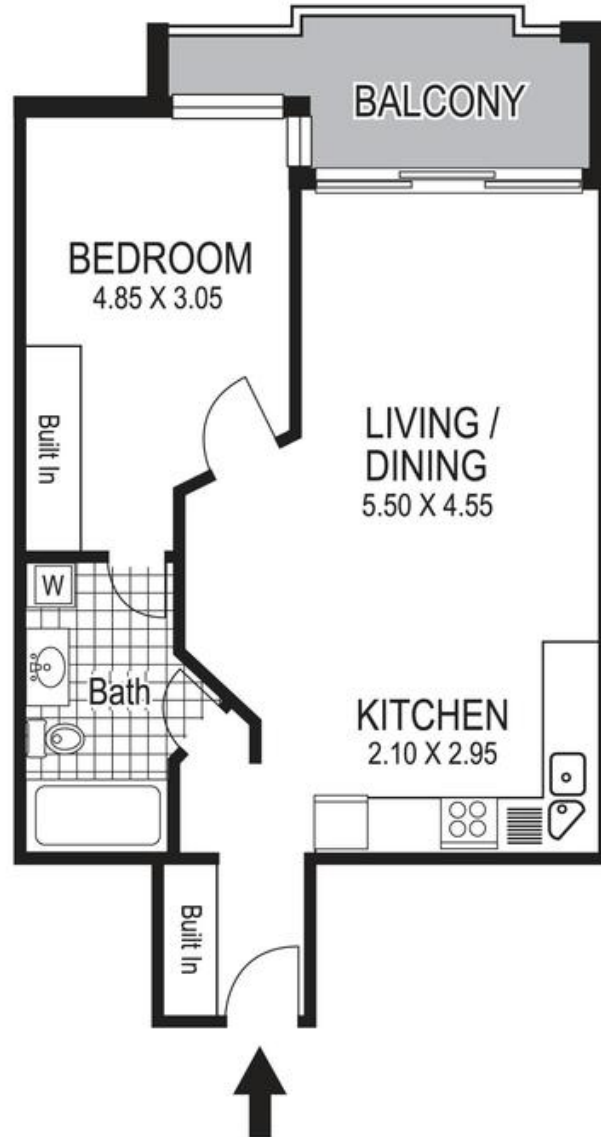
Proudly Richardson&Wrench

Richardson & Wrench Elizabeth Bay / Potts Point
02 8356 2700

Contact:
Luke McDonnell
0418 844 110

Contact:
Angelo Bouras
0401 658 653

R&W | The best reputation
in real estate
Elizabeth Bay/Potts Point



103 Victoria Street POTTS POINT *"VICTORIA POINT"*

Plans shown are for presentation purposes only and are not part of any legal document or title and are subject to errors, omissions, inaccuracies and they should not be used as sole and/or accurate reference for purchasing decision. Interested parties should make their own enquiries using other sources supplied. Dimensions shown on the plans are approximate values in length by width. Illustration by Raoul Isidro 04111 28500.