



3/3 Esther Street SURRY HILLS, NSW

2 bed | 1 bath

Stunning two level two bedroom apartment with soaring ceilings and abundant natural light throughout, located in a boutique security block of only six apartments.

Original polished timber floors greet you upon entry and create the warmth that is continued throughout the entry level that consists of the open plan kitchen, lounge, dining and living area.

Original double-height timber windows on three sides draw in an enormous amount of light, and the timeless all white kitchen with marble bench tops include gas cooking.

The upper level consists of two generous bedrooms, both...

R&W

rwebay.com.au/1856273

R&W Elizabeth Bay Potts Point

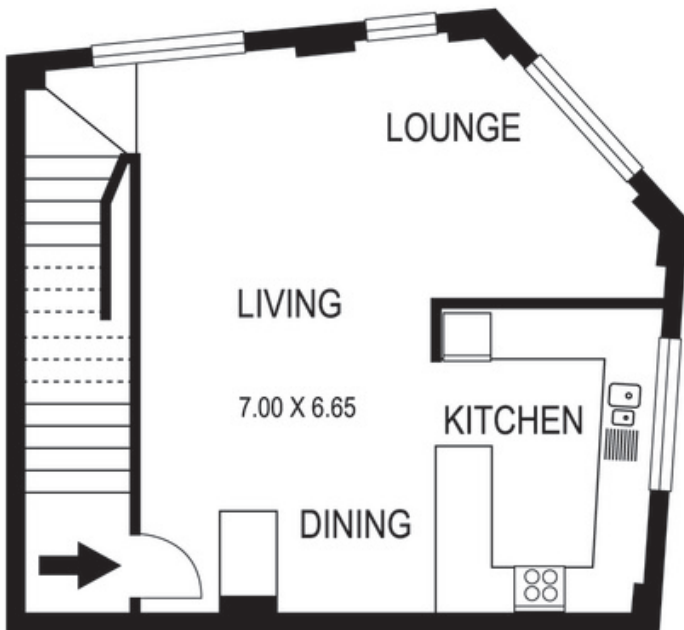
Proudly Richardson&Wrench

Richardson & Wrench Elizabeth Bay / Potts Point
02 8356 2700

Contact:
Nicholas Tsaoucis
0419 777 717



Upper Level



Main Level

**3 / 3 Esther Street
SURRY HILLS**

Plans shown are for presentation purposes only and are not part of any legal document or title and are subject to errors, omissions, inaccuracies and they should not be used as sole and/or accurate reference for purchasing decision. Interested parties should make their own enquiries using other sources supplied. Dimensions shown on the plans are approximate values in length by width. Illustration by Raoul Isidro 04111 28500.

Every precaution has been taken to establish accuracy of the information in this brochure but does not constitute any representation by the vendor or agent.