



2/6 Challis Avenue POTTS POINT, NSW

3 bed | 2 bath | 2 car

R&W

- * Gated private level entry from street, secure private porch, foyer
- * Direct internal private access from double security lockup garage
- * Bay fronted large Master bedroom with modern ensuite, walk-in robe and courtyard access
- * 2nd double bedroom with walk in robe and study area leading to North facing terrace
- * 3rd double bedroom with Built in Wardrobe also leads to North facing terrace
- * Modern main bathroom with powder room, separate inter...

rwebay.com.au/2022733

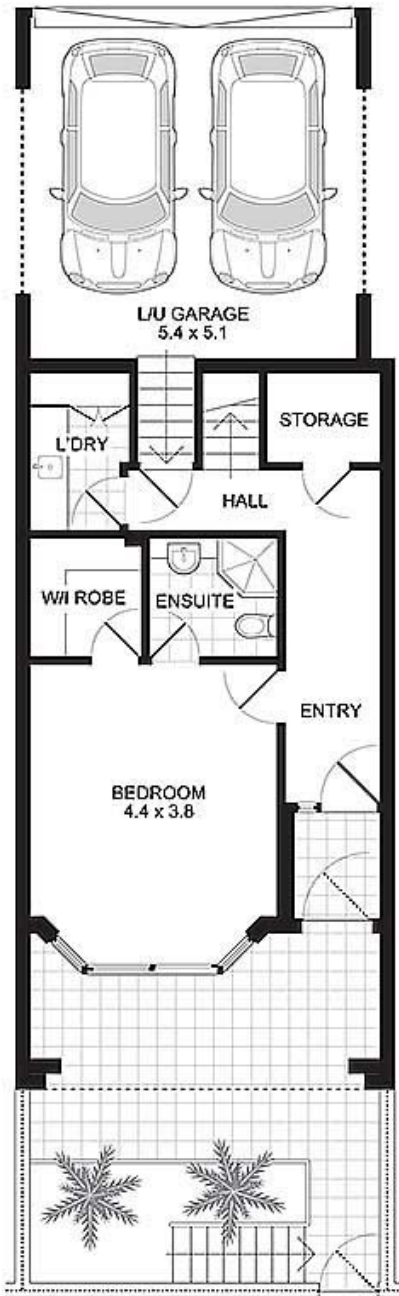
Geoff Cox 0418 231 004

Jason Boon 0418 671 494

Proudly Richardson&Wrench

Richardson & Wrench Elizabeth Bay / Potts Point
02 8356 2700

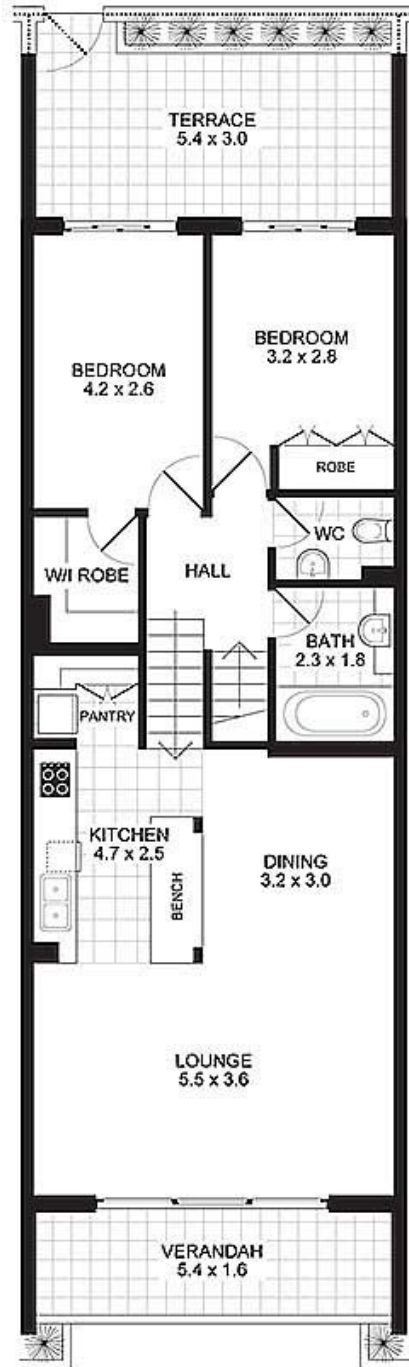
TOWNHOUSE 2
6 CHALLIS AVENUE
POTTS POINT



LEVEL ONE
Scale 1cm = 1m (approx)

PROMOPLANS ...adding REAL value!

E&OE This plan is for illustrative purposes only and dimensions are approximate. It does not constitute part of any legal document or commercial contract for the sale or lease of this property.
COPYRIGHT © 2010 PROMOPLANS 02 9572 7111
Warning: Usage restricted under the Copyright Act



LEVEL TWO
Scale 1cm = 1m (approx)

Contact

Jason Boon
Phone: 8356 2700 Mobile: 0418 671 494
Email: jboon@rwebay.com.au

Geoff Cox
Phone: 8356 2734 Mobile: 0418 231 004
Email: gcox@rwebay.com.au

**R&W Elizabeth Bay
Potts Point**

R&W