



## 35/3 Wylde Street POTTS POINT, NSW

1 bed | 1 bath

Sweeping views across the Manhattan-esque CBD skyline to the Opera House and Harbour Bridge, this recently contemporised apartment's expansive outlook includes the Royal Botanical Gardens, Boy Charlton Pool and the idyllic waters of Woolloomooloo Bay. Set above the vibrant harbourside locale, this is a fantastic city fringe pied-à-terre for those seeking nothing-to-spend sophistication with crisp white spaces. Well positioned for easy access to Potts Point's urbane village atmosphere, chic shops, nightlife and transport, including nearby car share. Few compare with this apartment's architectural flair.

...

**R&W**

**[rwebay.com.au/2037386](http://rwebay.com.au/2037386)**

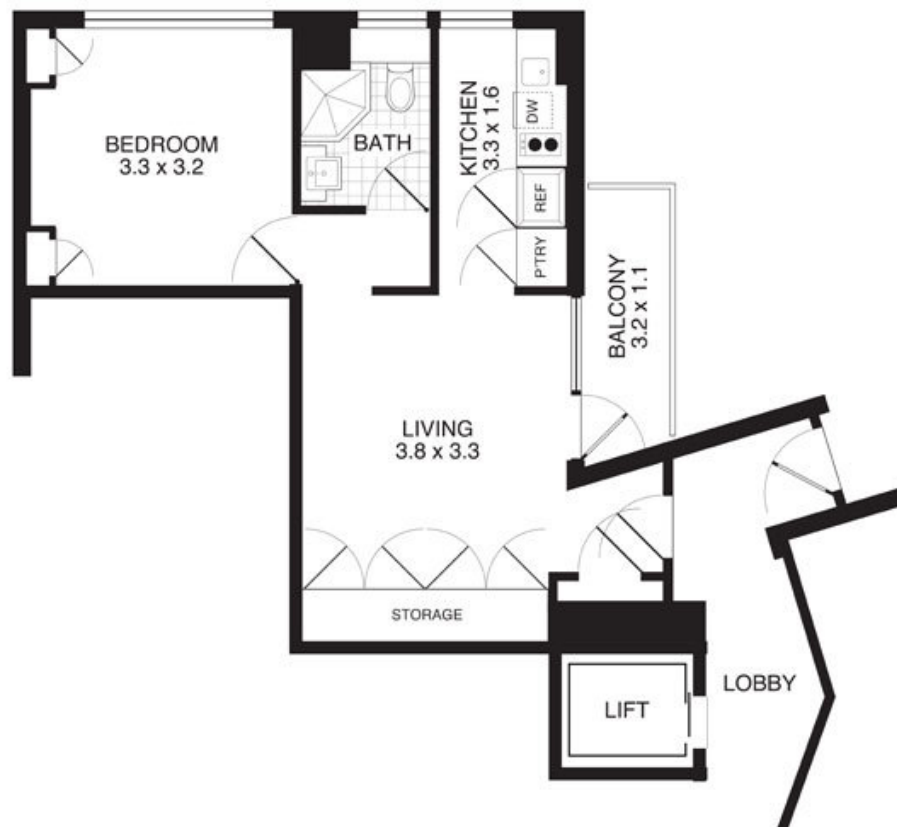
Jason Boon 0418 671 494

Geoff Cox 0418 231 004

**Proudly Richardson&Wrench**

Richardson & Wrench Elizabeth Bay / Potts Point  
02 8356 2700

## APARTMENT 35/3 WYLDE STREET POTTS POINT



0 1 2 3 4 5  
metres

E&OE This plan is for illustrative purposes only and dimensions are approximate. It does not constitute part of any legal document or commercial contract for the sale or lease of this property.

COPYRIGHT 2007 PROMOPLANS 02 9572 7111

Jason Boon 0418 671 494

**RICHARDSON & WRENCH**  
**Elizabeth Bay/Potts Point**

Phone 8356 2700

Fax 8356 2799

[jboon@rwebay.com.au](mailto:jboon@rwebay.com.au)

[www.rwebay.com.au](http://www.rwebay.com.au)