



41/8 Macleay Street POTTS POINT, NSW

1 bed | 1 bath

Bathed in north east light & presiding over sublime views of the boat filled Bay & up the Harbour to the Heads, the spell binding panorama takes centre stage at this idyllic one bedroom home. Set on level 7 of Macleay Gardens the building is set quietly back from the street with access to both Macleay Street on the Potts Point side and Billyard Ave on the Elizabeth Bay side.

* Elevated uninterrupted position looking north east to the Heads.

* Floating timber floors, floor to ceiling sliders capture views

R&W

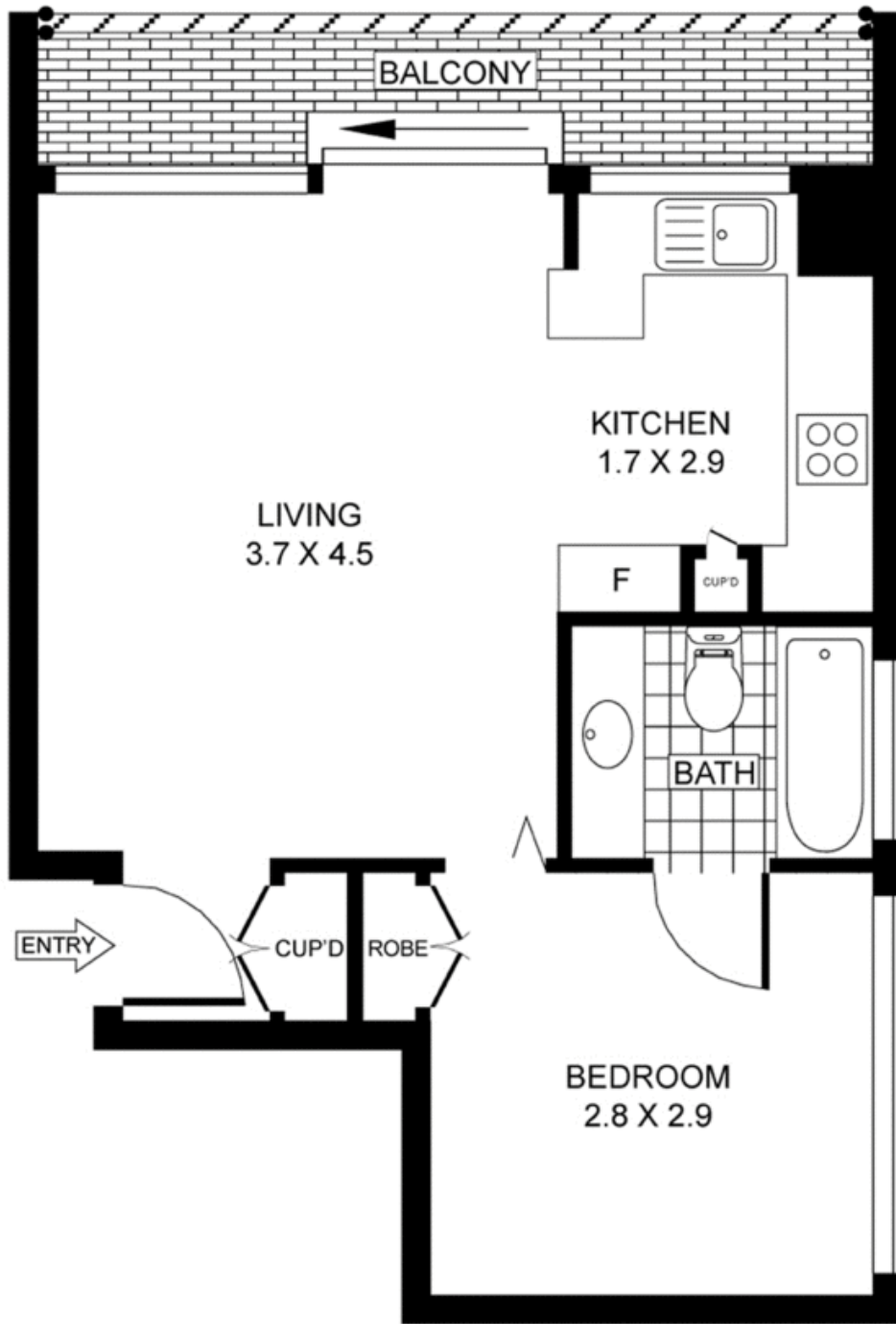
rwebay.com.au/2038904

Greg McKinley 0412 044 822

Andrew Hoggett 0412 208 614

Proudly Richardson&Wrench

Richardson & Wrench Elizabeth Bay / Potts Point
02 8356 2700



LEVEL SEVEN