



Private Rooftop



22/165 Victoria Street POTTS POINT, NSW

1 bed | 1 bath

R&W

* Open living room and adjoining separate dining room/study, leafy outlooks

* CaesarStone kitchen features city cameos, st/steel hob, oven, dishwasher

* Double bedroom with city cameos, mirrored built-in wardrobe, ceiling fan

* Glass-mosaic light and airy bathroom with bath, built-ins, internal laundry

* Entry hall, built-in shelves, tall doorways, high ceilings, Oak floorboards

* Smart colours, quality modern finishes, monitored sec...

rwebay.com.au/2102672

Geoff Cox 0418 231 004

Jason Boon 0418 671 494

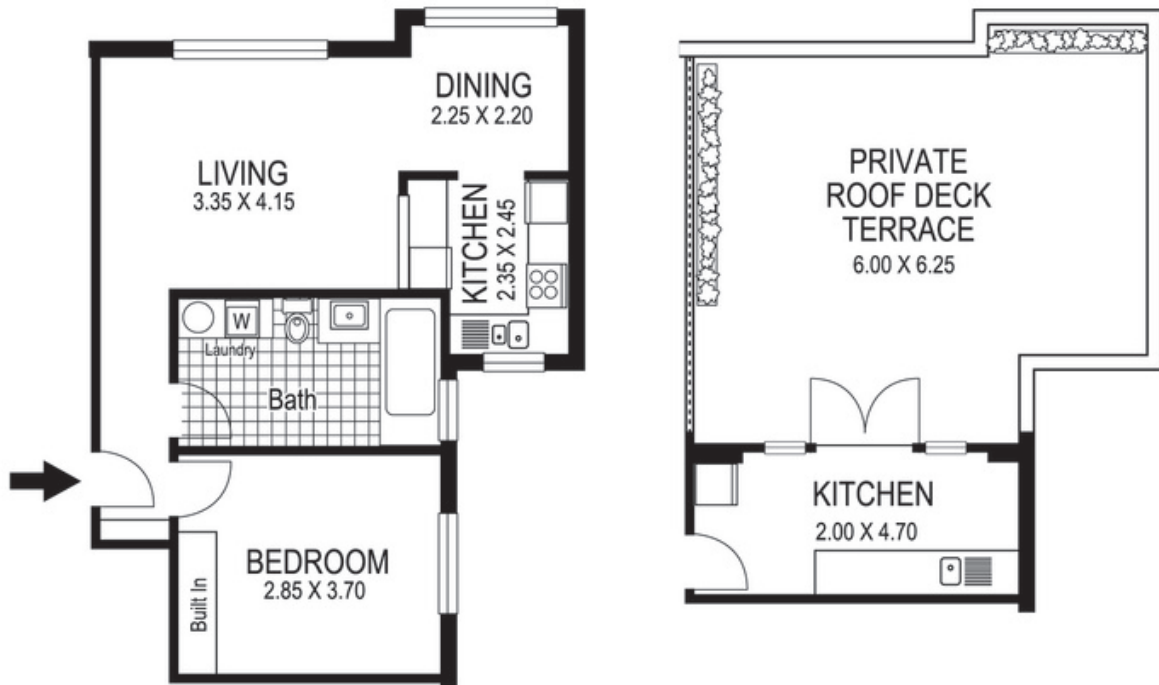
Proudly Richardson&Wrench

Richardson & Wrench Elizabeth Bay / Potts Point
02 8356 2700

R&W | The best reputation
in real estate
Elizabeth Bay/Potts Point

Contact:
Jason Boon
0418 671 494

Contact:
Geoff Cox
0418 231 004



22 / 165 Victoria Street
POTTS POINT
"CROSSPOINT"

Plans shown are for presentation purposes only and are not part of any legal document or title and are subject to errors, omissions, inaccuracies and they should not be used as sole and/or accurate reference for purchasing decision. Interested parties should make their own enquiries using other sources supplied. Dimensions shown on the plans are approximate values in length by width. Illustration by Raoul Isidro 04111 28500.

Every precaution has been taken to establish accuracy of the information in this brochure but does not constitute any representation by the vendor or agent.

R&W