



## 5/65 Elizabeth Bay Road ELIZABETH BAY, NSW

3 bed | 2 bath | 1 car

**R&W**

- \* Valuable off-street parking via shared level access secure walkway/driveway
- \* Large open plan living/dining areas lead out onto balcony and floodlit decking
- \* Gourmet European kitchen with granite benchtop, breakfast bar, ample storage
- \* Master bedroom with own sitting area, walk-in robe, marble ensuite bathroom
- \* 2 additional double bedrooms with built-ins, marble main bathroom (with bath)
- \* Study nook, internal laundry room, central hallway wi...

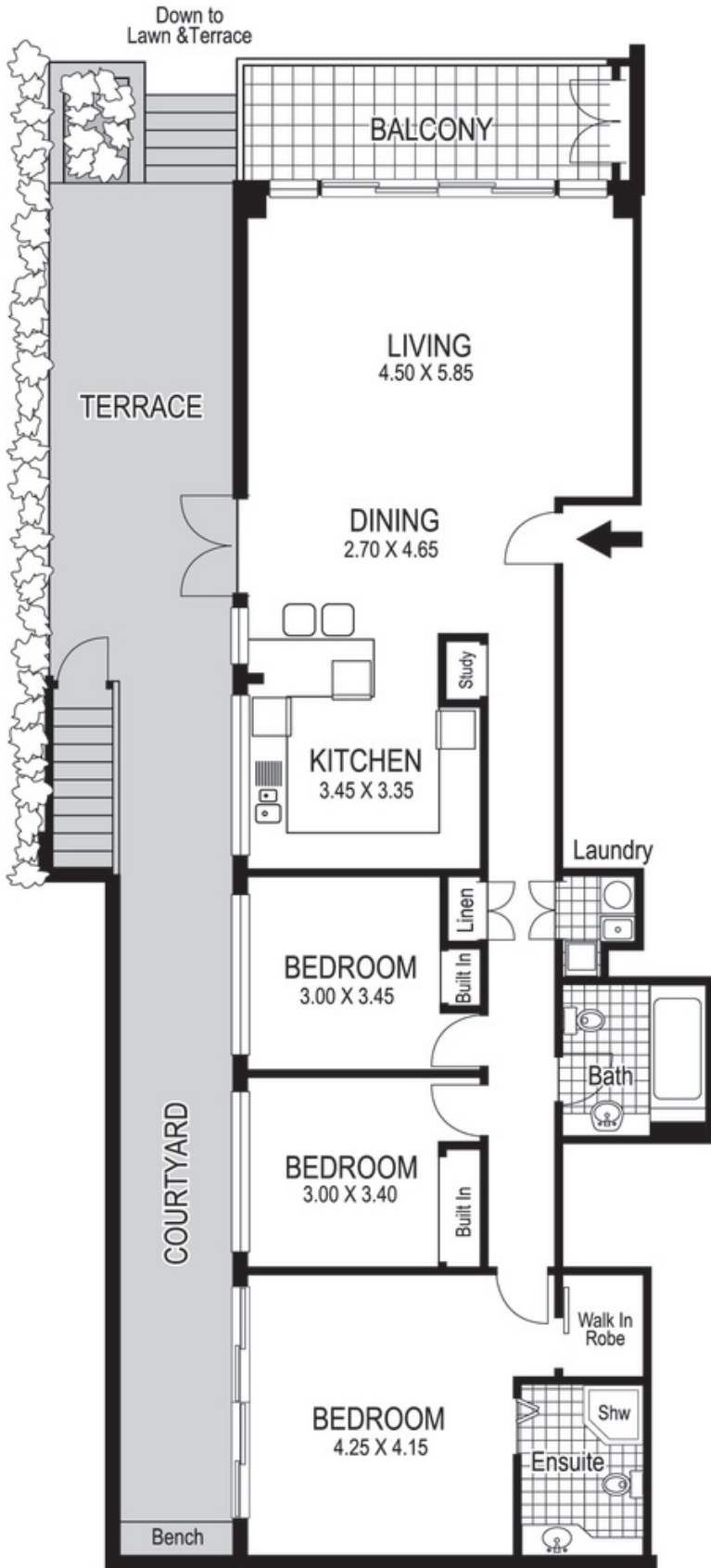
[rwebay.com.au/2150502](http://rwebay.com.au/2150502)

Jason Boon 0418 671 494

Geoff Cox 0418 231 004

**Proudly Richardson&Wrench**

Richardson & Wrench Elizabeth Bay / Potts Point  
02 8356 2700



Down to  
Lawn & Terrace

BALCONY

TERRACE

LIVING  
4.50 X 5.85

DINING  
2.70 X 4.65

KITCHEN  
3.45 X 3.35

Study

Laundry

BEDROOM  
3.00 X 3.45

Linen

Built In

Bath

BEDROOM  
3.00 X 3.40

Built In

Walk In  
Robe

BEDROOM  
4.25 X 4.15

Shw  
Ensuite

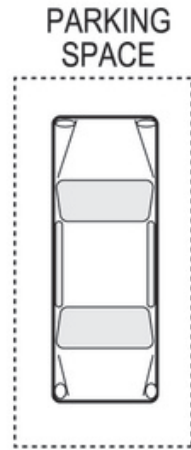
Bench

5 / 65 Elizabeth Bay Road  
ELIZABETH BAY

**R&W** | The best reputation  
in real estate  
Elizabeth Bay/Potts Point

Contact:  
Jason Boon  
0418 671 494

Contact:  
Geoff Cox  
0418 231 004



Plans shown are for presentation purposes only and are not part of any legal document or title and are subject to errors, omissions, inaccuracies and they should not be used as sole and/or accurate reference for purchasing decision. Interested parties should make their own enquiries using other sources supplied. Dimensions shown on the plans are approximate values in length by width. Illustration by Raoul Isidro 04111 28500.

Every precaution has been taken to establish accuracy of the information in this brochure but does not constitute any representation by the vendor or agent.

**R&W**