



## 1/12 St Neot Avenue POTTS POINT, NSW

3 bed | 2 bath | 2 car

**R&W**

Imagine the pleasure of being the first occupant of this stunning new private haven. Designed by multi-award-winning architect Luigi Rosselli for understated luxury living with minimal upkeep, this house-style strata apartment sparkles with newness beyond the classic period facade. Generously proportioned and expertly rebuilt from a shell, this unrivalled indoor-outdoor home is perfect for discerning buyers wanting an architectural masterwork in an exclusive cityside cul-de-sac. A short walk to Macleay Street shopping and dining options, or Woolloomooloo Bay restaurants en route to the CBD, this cosmopolitan boutique residence occupies an entire floor in a dual street fronted block of just two.

**[rwebay.com.au/2172630](http://rwebay.com.au/2172630)**

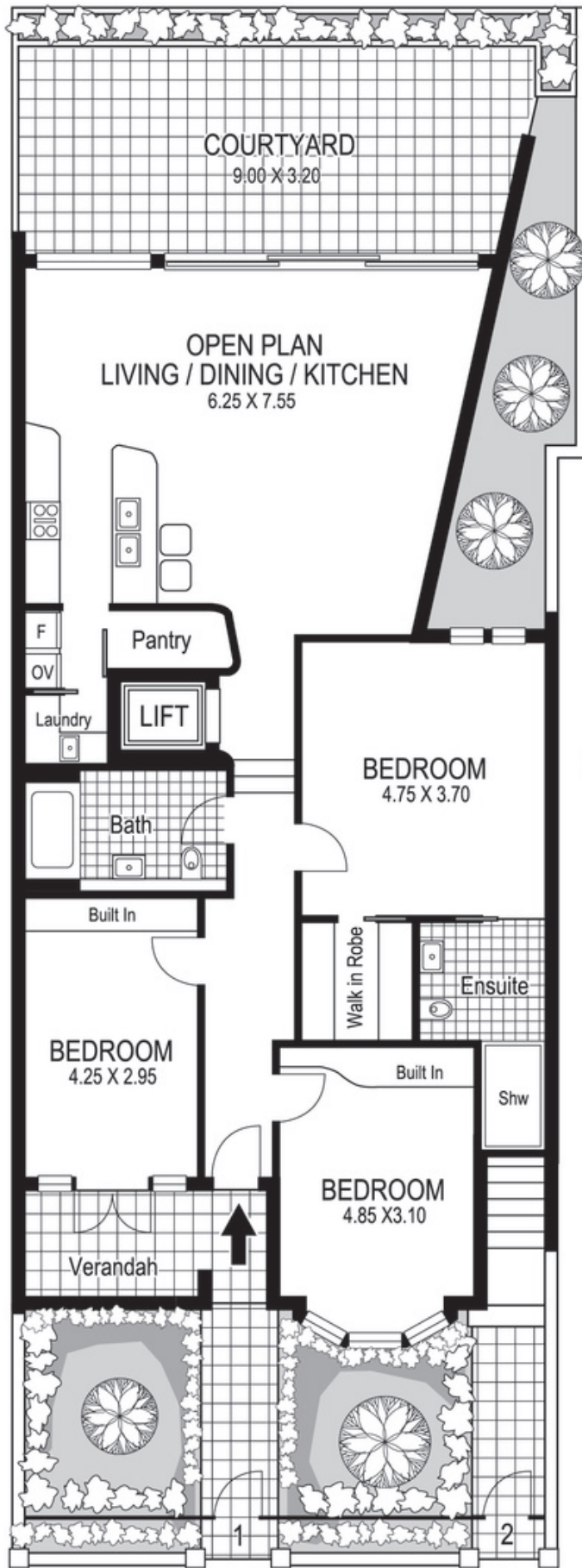
Andrew Hoggett 0412 208 614

Jason Boon 0418 671 494

Greg McKinley 0412 044 822

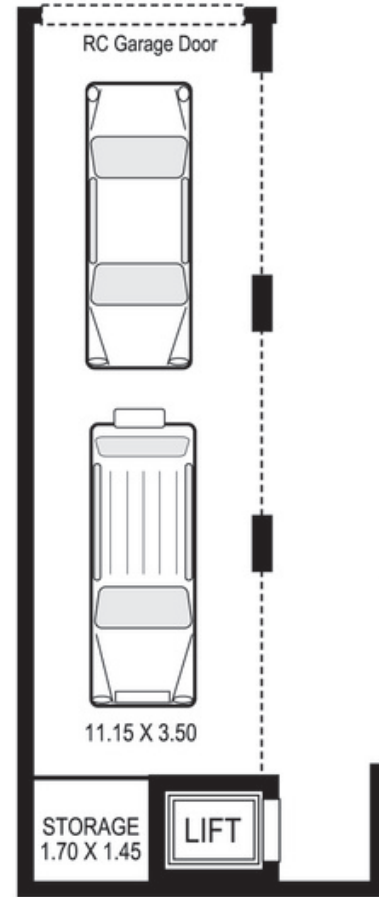
**Proudly Richardson&Wrench**

Richardson & Wrench Elizabeth Bay / Potts Point  
02 8356 2700



**Ground Floor**

GRANTHAM STREET



**Lower Level**

**1 / 12 St Neot Avenue  
POTTS POINT  
"ALLAMBIE"**

**R&W** | The best reputation  
in real estate  
Elizabeth Bay/Potts Point

Contact:  
Andrew Hoggett  
0412 208 614

Contact:  
Greg McKinley  
0412 044 822

Every precaution has been taken to establish accuracy of the information in this brochure but does not constitute any representation by the vendor or agent.

**R&W**

Plans shown are for presentation purposes only and are not part of any legal document or title and are subject to errors, omissions, inaccuracies and they should not be used as sole and/or accurate reference for purchasing decision. Interested parties should make their own enquiries using other sources supplied. Dimensions shown on the plans are approximate values in length by width. Illustration by Rabou Isidro 04111 28500.