



39/20 Springfield Avenue POTTS POINT, NSW

1 bed | 1 bath

R&W

A collector's item of cutting edge style, this sleek contemporary apartment offers a highly inventive redesign by award winning architect William Smart. Featured in the celebrated publication 50 OF THE WORLDS BEST APARTMENTS and shortlisted for the coveted IDEA Design Awards, it's this apartment's passionate attention to detail and hip Soho style locale that excites design-savvy buyers.

rwebay.com.au/2185278

Luke McDonnell 0418 844 110

Angelo Bouras 0401 658 653

Proudly Richardson&Wrench

Richardson & Wrench Elizabeth Bay / Potts Point
02 8356 2700

*North facing and flooded with light, the open plan layout's

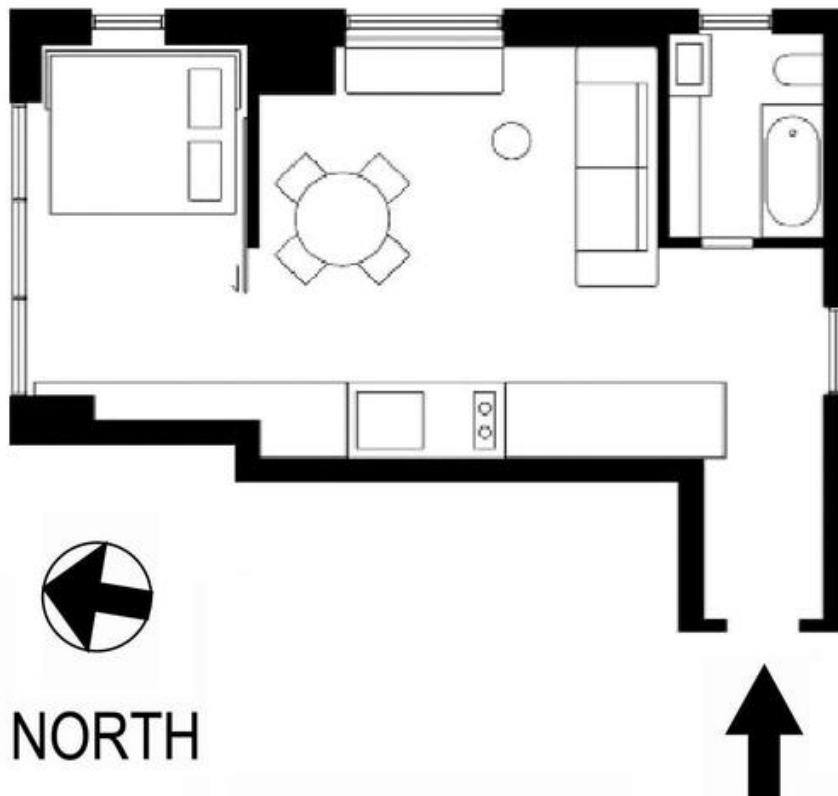
*Streamlined storage solutions add creative flair to this unique city pad.

*Northerly corner position, windows on 3 sides, acoust...

R&W | The best reputation
in real estate
Elizabeth Bay / Potts Point

Contact:
Luke McDonnell
0418 844 110

Contact:
Angelo Bouras
0401 658 653



39 / 20-22 Springfield Avenue
POTTS POINT
"SANDRINGHAM"

Plans shown are for presentation purposes only and are not part of any legal document or title and are subject to errors, omissions, inaccuracies and they should not be used as sole and/or accurate reference for purchasing decision. Interested parties should make their own enquiries using other sources supplied. Dimensions shown on the plans are approximate values in length by width. Illustration by Raoul Isidro 04111 28500.

Every precaution has been taken to establish accuracy of the information in this brochure but does not constitute any representation by the vendor or agent.

R&W