

6/61 Bayswater Road RUSHCUTTERS BAY, NSW

1 bed | 1 bath

R&W

An ideal entry point to a sought after parkside/harbourside enclave, this stunning one bedroom in the updated *Claridge* circa 1966, is sure to appeal to the astute buyer. Only meters from transport, cafes, restaurants and all that Potts Point has to offer.

- * Smart marble top kitchen with built-in fridge & freezer
- * Second floor position with north/east aspect
- * Double built-in robes in the bedroom
- * Dark parquet flooring through the sitting & dining area
- * Stylishly designed bathroom with marble tops

rwebay.com.au/2191885

Luke McDonnell 0418 844 110

Angelo Bouras 0401 658 653

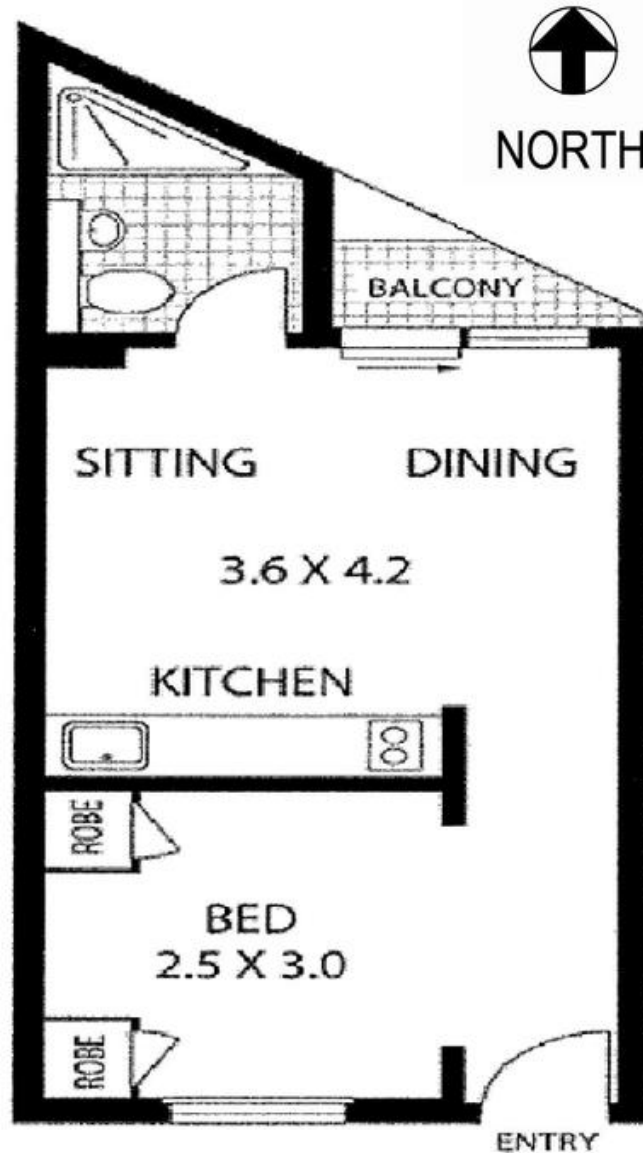
Proudly Richardson&Wrench

Richardson & Wrench Elizabeth Bay / Potts Point
02 8356 2700

R&W | The best reputation
in real estate
Elizabeth Bay/Potts Point

Contact:
Luke McDonnell
0418 844 110

Contact:
Angelo Bouras
0401 658 653



6/61-65 Bayswater Road
RUSHCUTTERS BAY
"The Claridge"

Plans shown are for presentation purposes only and are not part of any legal document or title and are subject to errors, omissions, inaccuracies and they should not be used as sole and/or accurate reference for purchasing decision. Interested parties should make their own enquiries using other sources supplied. Dimensions shown on the plans are approximate values in length by width. Illustration by Raoul Isidro 04111 28500.

Every precaution has been taken to establish accuracy of the information in this brochure but does not constitute any representation by the vendor or agent.

R&W