



11/10 Earl Place POTTS POINT, NSW

1 bed | 1 bath

With the combination of a perfectly proportioned floorplan, stylish easy living and modern finishes and features throughout, this apartment offers all the attributes a quality home or investment rarely found in this price range. Offering approximately 62m² of private space flowing indoors and out this home is located in ?Delta apartments?, an immaculately maintained strata title boutique style building

Features include:

* Well appointed open plan kitchen with stainless steel...

R&W

rwebay.com.au/2195522

Luke McDonnell 0418 844 110

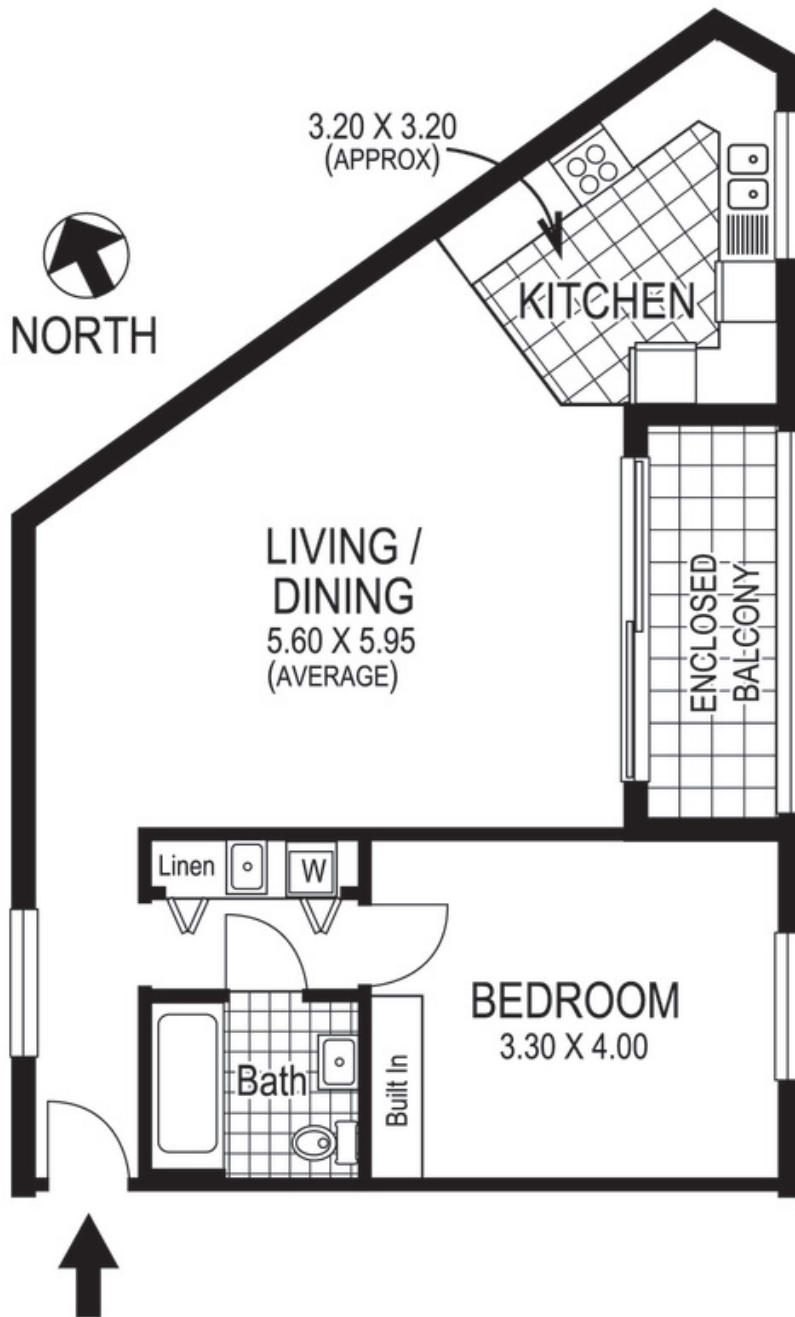
Angelo Bouras 0401 658 653

Proudly Richardson&Wrench

Richardson & Wrench Elizabeth Bay / Potts Point
02 8356 2700

Contact:
John Hogett
0431 411 004

R&W | The best reputation
in real estate
Elizabeth Bay/Potts Point



11 / 10 Earl Place POTTS POINT

Plans shown are for presentation purposes only and are not part of any legal document or title and are subject to errors, omissions, inaccuracies and they should not be used as sole and/or accurate reference for purchasing decision. Interested parties should make their own enquiries using other sources supplied. Dimensions shown on the plans are approximate values in length by width. Illustration by Raoul Isidro 04111 28500.

Every precaution has been taken to establish accuracy of the information in this brochure but does not constitute any representation by the vendor or agent.

R&W