



1604/7 Rockwall Crescent POTTS POINT, NSW

3 bed | 2 bath | 2 car

R&W

Enjoying a sunny north-east aspect with sweeping views across the boat-filled Bay and up the Harbour to the Heads and out to the Ocean, this luxurious apartment occupies a coveted position in one of Mirvac's finest security buildings. Quietly located high above the fashionable buzz and lifestyle of the elite harbourside/cityside locale, the spacious and bright layout has high-end finishes and views from all major rooms. A secure lift ride and a stroll to an extensive choice of cafes, supermarkets, delis, boutiques, waterfront parks, train station, bus routes and mere minutes to the CBD, this executive apartment is pet-friendly and ideal for young professionals, downsizers and investors.

...

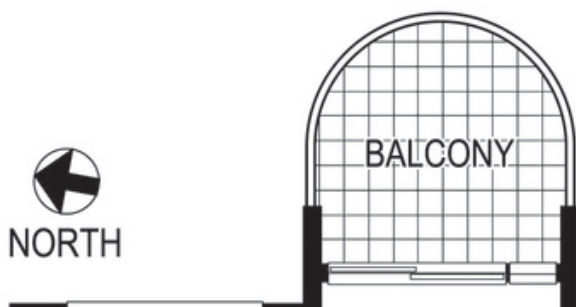
rwebay.com.au/2206855

Greg McKinley 0412 044 822

Andrew Hoggett 0412 208 614

Proudly Richardson&Wrench

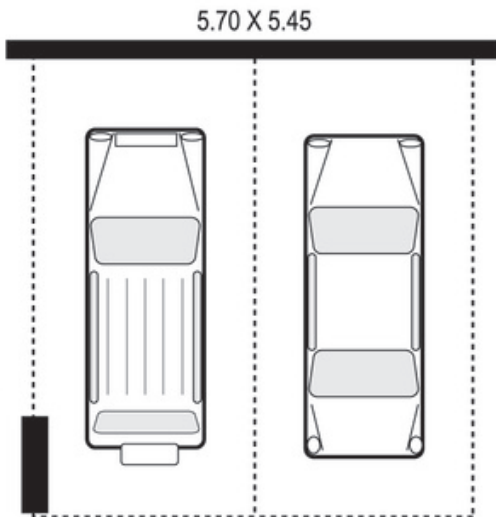
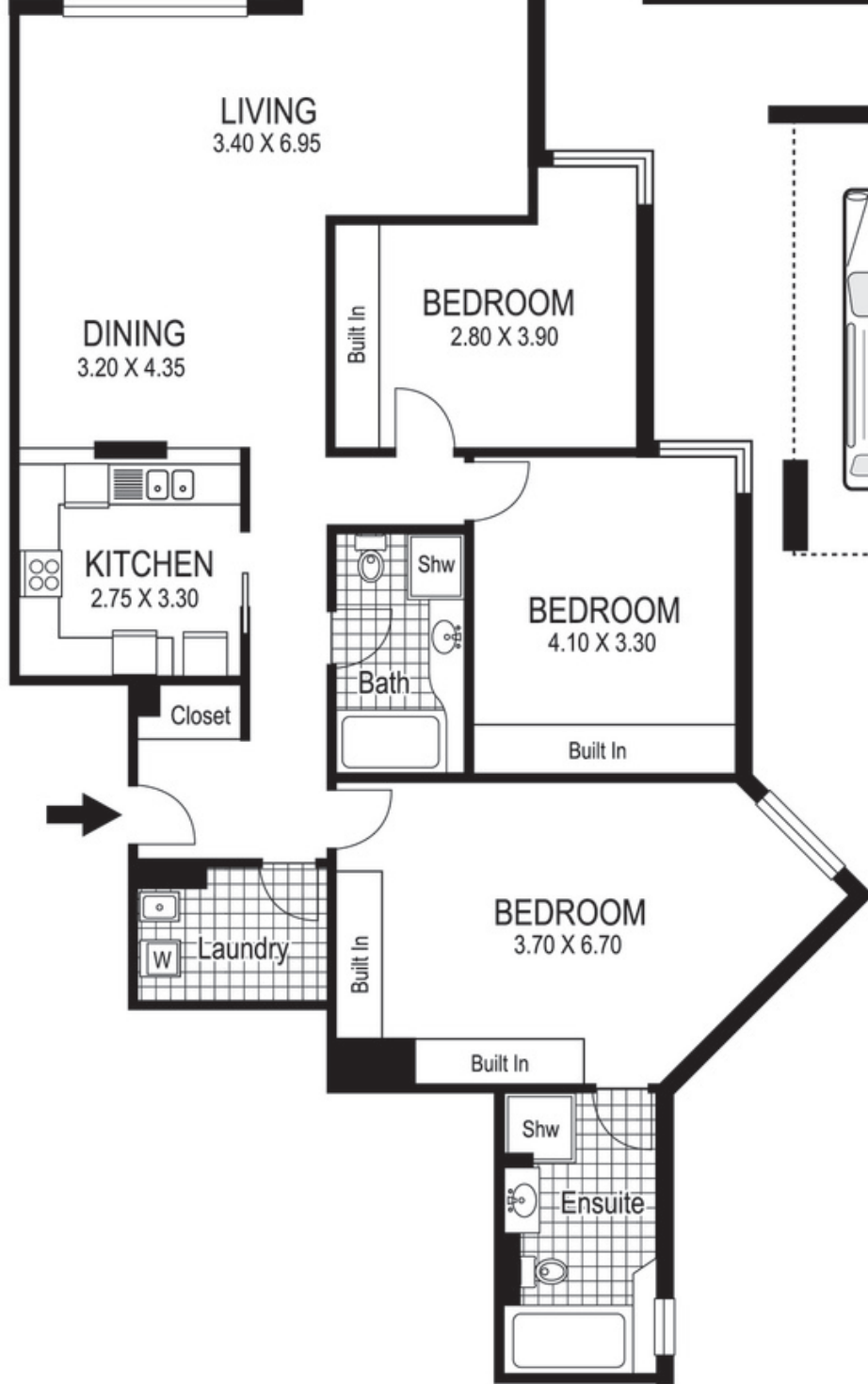
Richardson & Wrench Elizabeth Bay / Potts Point
02 8356 2700



R&W | The best reputation
in real estate
Elizabeth Bay/Potts Point

Contact:
Greg McKinley
0412 044 822

Contact:
Andrew Hoggett
0412 208 614



SECURITY
CAR PARKING
SPACE

**1604 / 7 Rockwall Crescent
POTTS POINT**

Plans shown are for presentation purposes only and are not part of any legal document or title and are subject to errors, omissions, inaccuracies and they should not be used as sole and/or accurate reference for purchasing decisions. Interested parties should make their own enquiries by other means. Dimensions shown on the plans are approximate values in length by width. Illustration by Robi Isidro 0411 28500.

Every precaution has been taken to establish accuracy of the information in this brochure but does not constitute any representation by the vendor or agent.

R&W