



## 1008/2 Springfield Avenue POTTS POINT, NSW

2 bed | 1 bath | 1 car

**R&W**

Stylishly renovated, this bright and airy apartment has all major rooms opening out to a sunny private wraparound balcony with panoramic district views spanning from the CBD skyline to the sparkling blue Harbour. Quiet and private on the 10th floor of popular Springfield Tower, a superbly updated modern landmark security building, this tightly held corner apartment is an idyllic cosmopolitan haven. Set high above the heart of fashionable Potts Point and the revitalized cafe shopping scene of the leafy piazza enclave - savvy buyers will be impressed by this ideal investment in location and lifestyle.

\* Caesarstone kitchen, breakfast bar, dishwasher, st/st...

**[rwebay.com.au/2215937](http://rwebay.com.au/2215937)**

Luke McDonnell 0418 844 110

Angelo Bouras 0401 658 653

Andrew Hoggett 0412 208 614

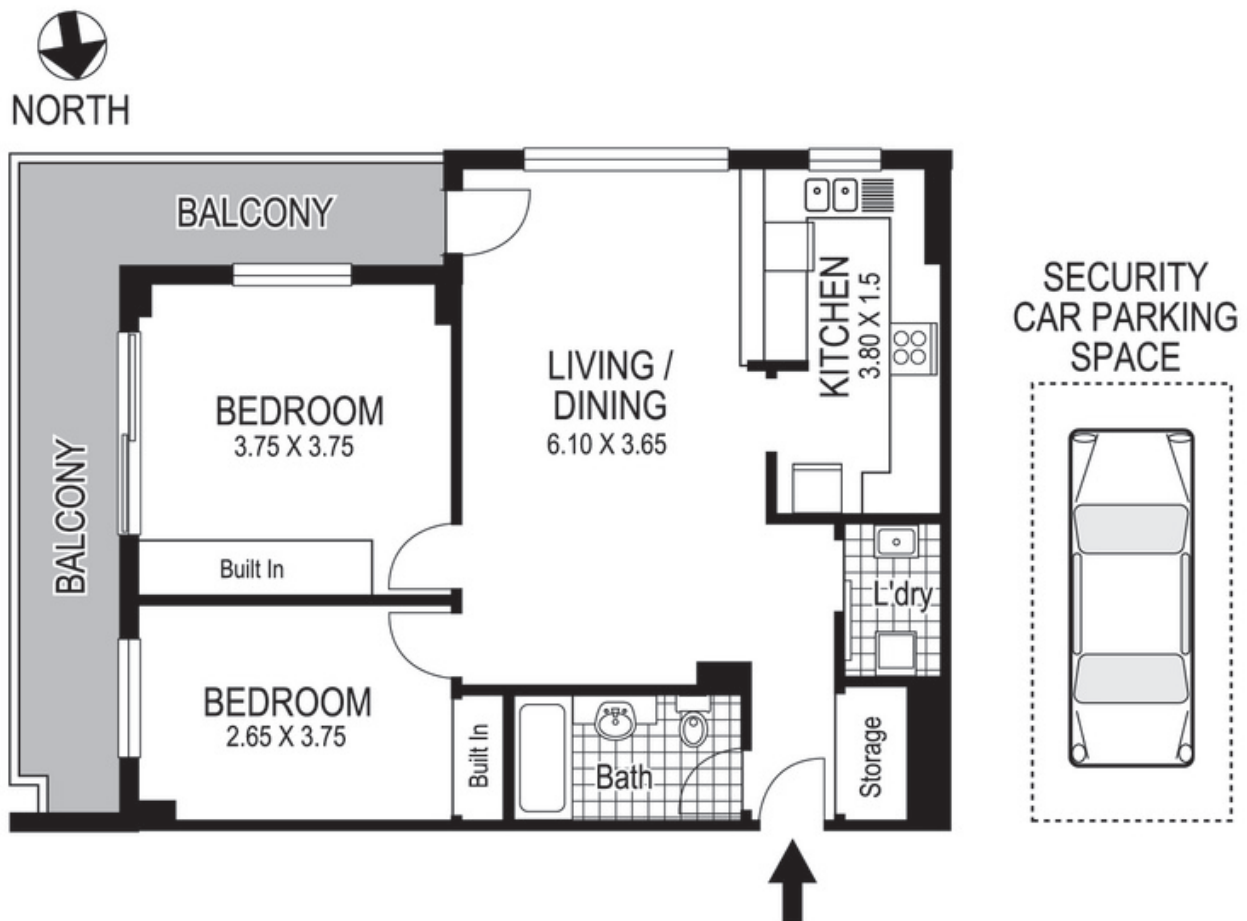
**Proudly Richardson&Wrench**

Richardson & Wrench Elizabeth Bay / Potts Point  
02 8356 2700

**R&W** | The best reputation  
in real estate  
**Elizabeth Bay / Potts Point**

Contact:  
Luke McDonnell  
0418 844 110

Contact:  
Angelo Bouras  
0401 658 653



**1008 / 2 Springfield Avenue**  
**POTTS POINT**  
**"SPRINGFIELD TOWER"**

Plans shown are for presentation purposes only and are not part of any legal document or title and are subject to errors, omissions, inaccuracies and they should not be used as sole and/or accurate reference for purchasing decision. Interested parties should make their own enquiries using other sources supplied. Dimensions shown on the plans are approximate values in length by width. Illustration by Raoul Isidro 04111 28500.

Every precaution has been taken to establish accuracy of the information in this brochure but does not constitute any representation by the vendor or agent.

**R&W**