



10/44a Bayswater Road RUSHCUTTERS BAY, NSW

3 bed | 1 bath

R&W

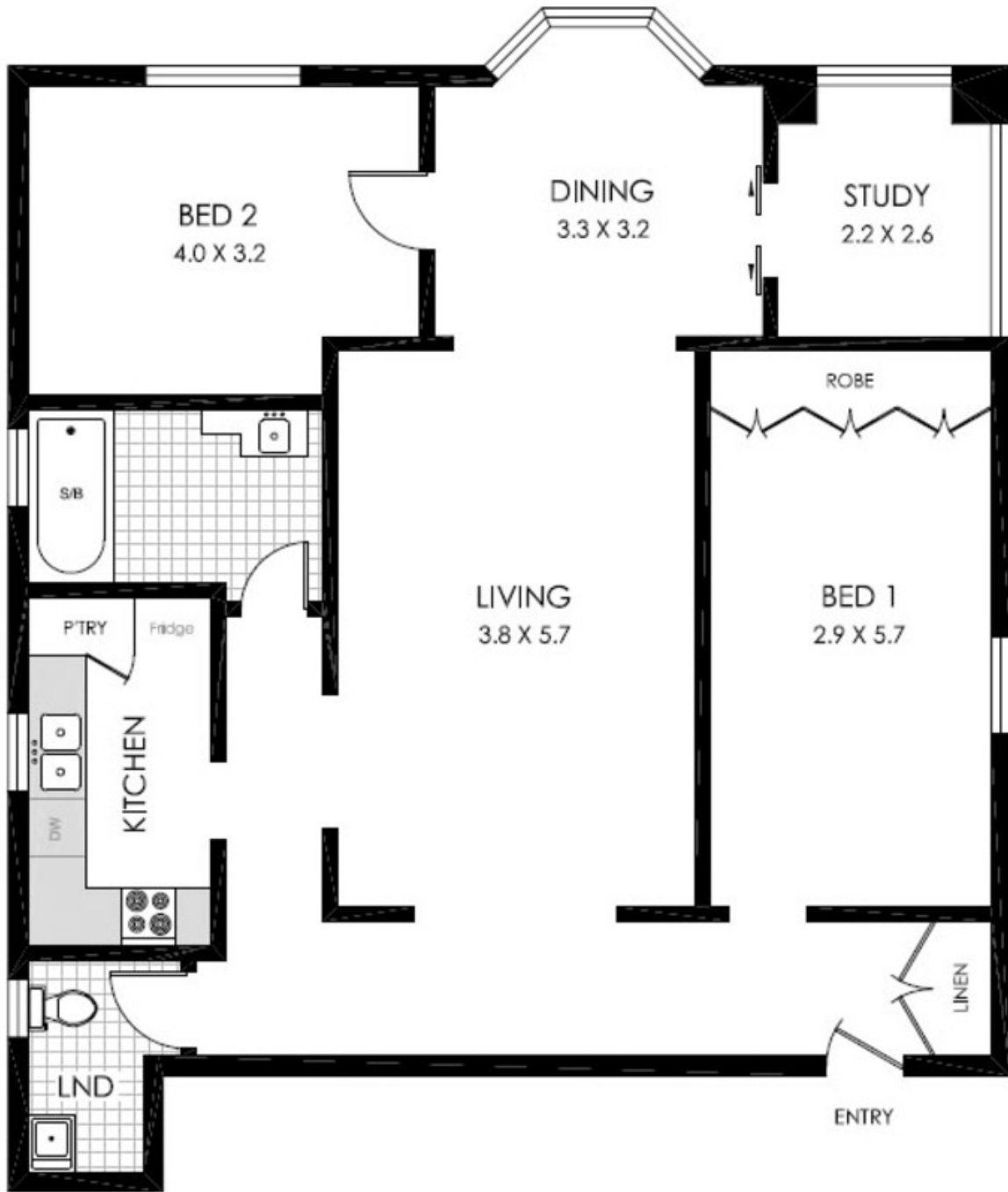
Located on the top floor of "Brentwood", this two bedroom plus study/third bedroom apartment has been tastefully renovated with both modern flare and period features. The versatile and grand floor plan spans approx. 105m², and features soaring high ceilings, two large bedrooms (king size master with abundance of built ins) and additional study/third bedroom, divided yet free flowing lounge and dining areas, designer bathroom with separate toilet/laundry, and a crisp modern kitchen with dishwasher. Located within a boutique Art Deco block of only 13 apartments and nestled among the vibrant cosmopolitan locale on the boarder of Rushcutters Bay and Potts Point.

rwebay.com.au/2224355

R&W Leasing 02 8356 2700

Proudly Richardson&Wrench

Richardson & Wrench Elizabeth Bay / Potts Point
02 8356 2700



PLANS SHOWN ARE ONLY INDICATIVE OF LAYOUT. DIMENSIONS ARE APPROXIMATE

All information contained herein is gathered from sources we believe to be reliable, however we cannot guarantee its accuracy and interested persons should rely on their own enquiries. Dimensions are approximate.



10/44A BAYSWATER ROAD
Council Rates: \$795 pa

RUSHCUTTERS BAY
Apartment Size: 103m²