



## G06/1A Tusculum Street POTTS POINT, NSW

2 bed | 2 bath | 1 car

**R&W**

- \* Pet friendly garden oasis offers the best corner wing position on garden level
- \* Level access via marble lobby or secure lift from secure parking and storage
- \* Limestone central entrance foyer sets the tone to bespoke luxury city living
- \* 2 spacious bedrooms, master with garden access, built-ins, limestone ensuite
- \* Limestone main bathroom, separate fully appointed internal laundry room
- \* Entertainers gourmet open plan stone kitchen with bre...

[rwebay.com.au/2230014](http://rwebay.com.au/2230014)

Jason Boon 0418 671 494

Geoff Cox 0418 231 004

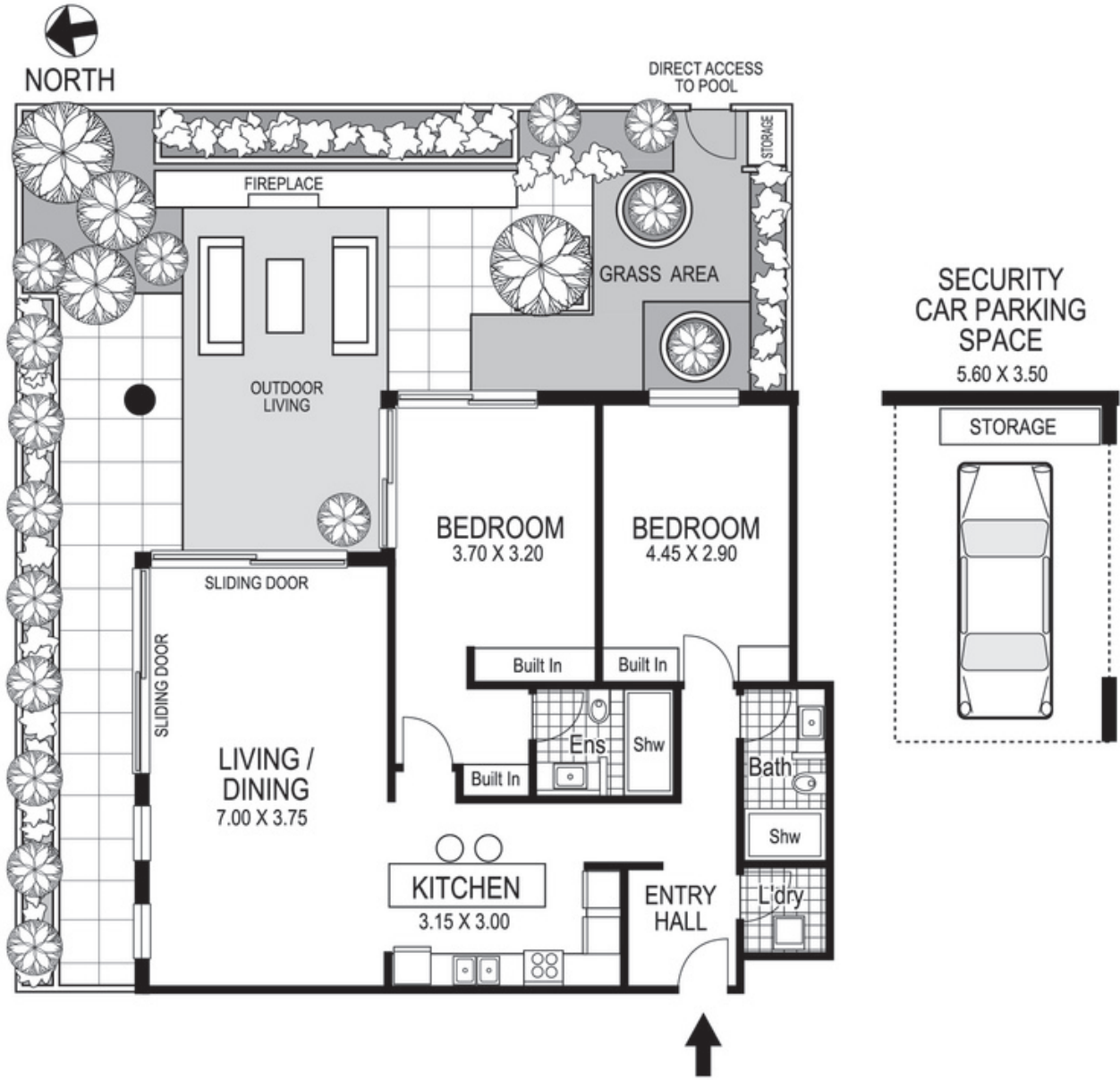
**Proudly Richardson&Wrench**

Richardson & Wrench Elizabeth Bay / Potts Point  
02 8356 2700

**R&W** | The best reputation  
in real estate  
**Elizabeth Bay/Potts Point**

Contact:  
Jason Boon  
0418 671 494

Contact:  
Geoff Cox  
0418 231 004



**G06 / 1a Tusculum Street  
POTTS POINT  
"ROCKWALL GARDENS"**

Plans shown are for presentation purposes only and are not part of any legal document or title and are subject to errors, omissions, inaccuracies and they should not be used as sole and/or accurate reference for purchasing decision. Interested parties should make their own enquiries using other sources supplied. Dimensions shown on the plans are approximate values in length by width. Illustration by Raoul Isidro 04111 28500.

Every precaution has been taken to establish accuracy of the information in this brochure but does not constitute any representation by the vendor or agent.

**R&W**