



30/20 Springfield Avenue POTTS POINT, NSW

| 1 bath

Sundrenched studio in popular 'Sandringham' with room to capitalise on this unique city side residence or ideal investment. Ideally located amongst the fashionable Potts Point cosmopolitan lifestyle with restaurants, cafes and boutique retail.

- *Renovated/modern gas kitchen with dining alcove
- *Generous open plan living
- *Decorative details and high ceilings
- *Original bathroom with period features and tub

R&W

rwebay.com.au/2230022

Luke McDonnell 0418 844 110

Angelo Bouras 0401 658 653

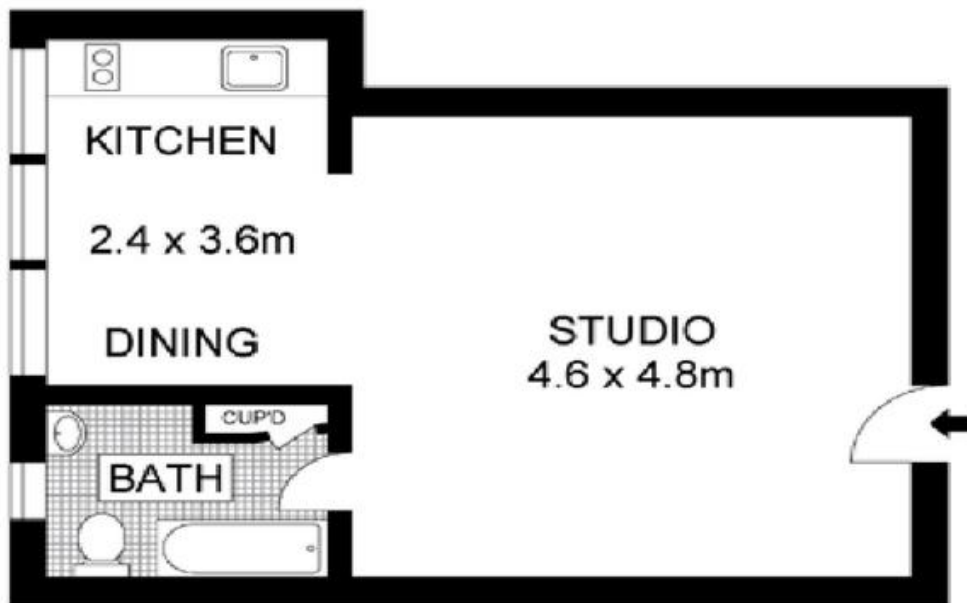
Proudly Richardson&Wrench

Richardson & Wrench Elizabeth Bay / Potts Point
02 8356 2700

R&W | The best reputation
in real estate
Elizabeth Bay / Potts Point

Contact:
Luke McDonnell
0418 844 110

Contact:
Angelo Bouras
0401 658 653



NORTH

30 / 20-22 Springfield Avenue
POTTS POINT

"SANDRINGHAM"

Plans shown are for presentation purposes only and are not part of any legal document or title and are subject to errors, omissions, inaccuracies and they should not be used as sole and/or accurate reference for purchasing decision. Interested parties should make their own enquiries using other sources supplied. Dimensions shown on the plans are approximate values in length by width. Illustration by Raoul Isidro 04111 28500.

Every precaution has been taken to establish accuracy of the information in this brochure but does not constitute any representation by the vendor or agent.

R&W