



7/49 Elizabeth Bay Road ELIZABETH BAY, NSW

3 bed | 1 bath

R&W

Combining 1917 period details with grand proportions and a prime location, this large apartment's flowing layout offers unusual flexibility. Set in a gracious strata security building in the heart of the harbourside locale, this canvas is quiet and private. Comfortable as is, with scope to add further value, the 3.3m high decorative ceilings and spacious rooms are the ideal features to inspire buyers. Capitalise on space, charm and location.

* Impressive bay windows, wide central entrance hall

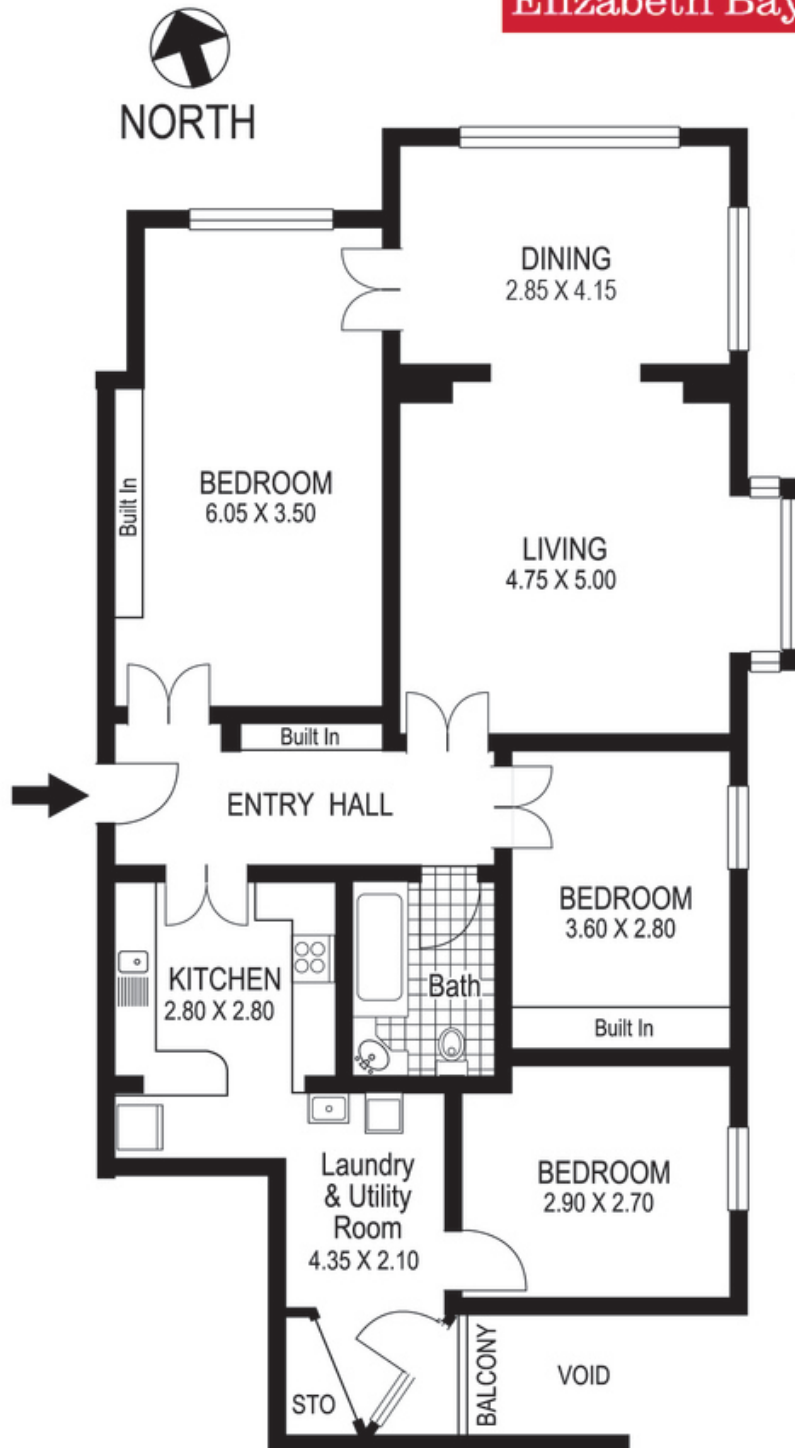
rwebay.com.au/2237237

Luke McDonnell 0418 844 110

Angelo Bouras 0401 658 653

Proudly Richardson&Wrench

Richardson & Wrench Elizabeth Bay / Potts Point
02 8356 2700



Contact:
Luke McDonnell
0418 844 110

Contact:
Angelo Bouras
0401 658 653

7 / 49 Elizabeth Bay Road
ELIZABETH BAY
"KARORI"

© Dimensions shown on plans are approximate values in L x W
Colour formulas and area coding are subject to copyright
Illustration by Raoul Isidro 04111 28500

Plans shown are for presentation purposes only and are not part of any legal document or title
and are subject to errors, omissions, inaccuracies and they should not be used as sole and/or accurate
reference for purchasing decision. Interested parties should make their own enquiries using other sources supplied.

Every precaution has been taken to establish accuracy of the information in this
brochure but does not constitute any representation by the vendor or agent.