



21/165 Victoria Street POTTS POINT, NSW

1 bed | 1 bath

The large (approx 39sqm) sunny North-facing private outdoor entertaining view-terrace adds a fabulous bonus to this stylishly contemporised 1-bedroom apartment! Bright, airy and penthouse-style positioned in Crosspoint, a recently updated classic Art Deco security block, this quiet and private apartment offers easy modern low-maintenance city living with restaurants, cafes, shops, supermarkets, train station and parks virtually at the doorstep. Smartly presented yet competitively priced, the apartment offers elevated treescape outlooks whilst the secure separate private rooftop deck captures 270-degree views featuring the CBD, Botanic Gardens, Opera House, Harbour Bridge and NYE fireworks.

R&W

rwebay.com.au/2266054

Geoff Cox 0418 231 004

Jason Boon 0418 671 494

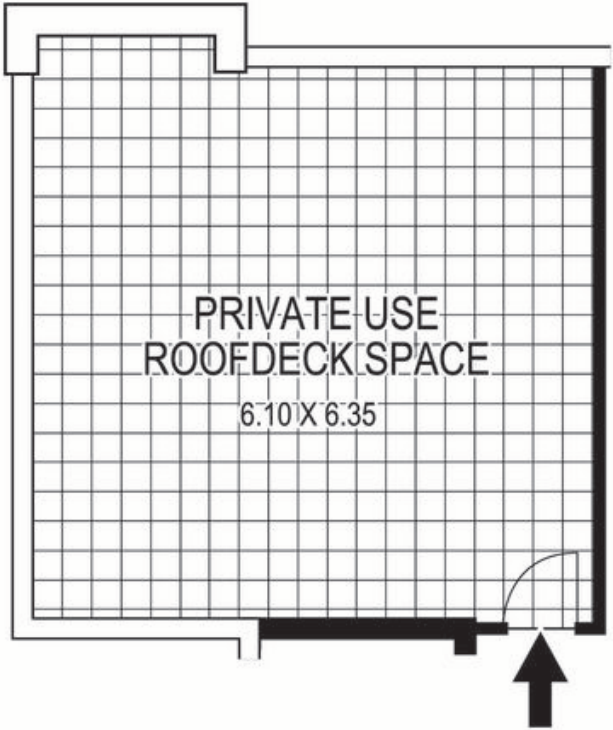
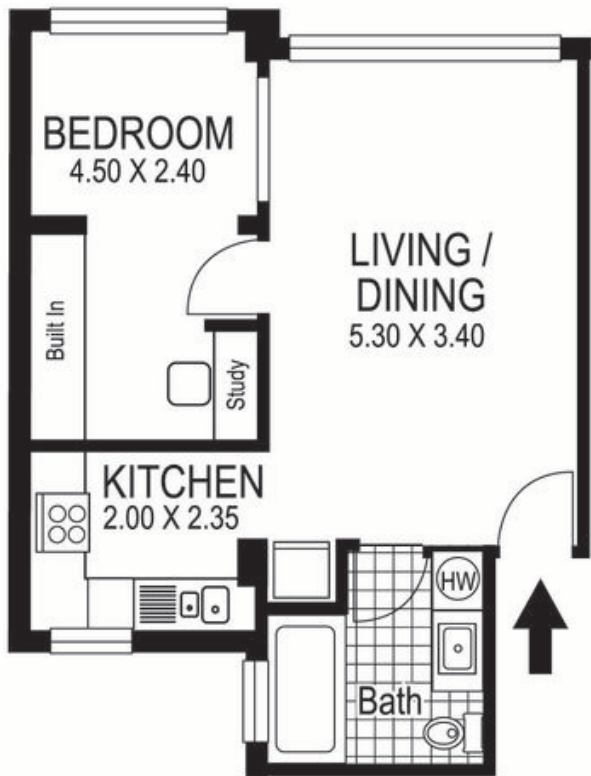
Proudly Richardson&Wrench

Richardson & Wrench Elizabeth Bay / Potts Point
02 8356 2700

R&W | The best reputation
in real estate
Elizabeth Bay/Potts Point

Contact:
Jason Boon
0418 671 494

Contact:
Geoff Cox
0418 231 004



21 / 165 Victoria Street
POTTS POINT
"CROSSPOINT"

Plans shown are for presentation purposes only and are not part of any legal document or title and are subject to errors, omissions, inaccuracies and they should not be used as sole and/or accurate reference for purchasing decision. Interested parties should make their own enquiries using other sources supplied. Dimensions shown on the plans are approximate values in length by width. Illustration by Raoul Isidro 04111 28500.

Every precaution has been taken to establish accuracy of the information in this brochure but does not constitute any representation by the vendor or agent.

