



## 1304/81 Macleay Street POTTS POINT, NSW

3 bed | 2 bath | 2 car

**R&W**

- \* Secure lift access via grand lobby and secure double parking, storage
- \* Imaginative crossover layout maximizes style, space and natural light
- \* Central foyer, ample built-ins, spacious separate internal laundry room
- \* 3 spacious bedrooms with built-ins, 2 quality bathrooms
- \* Master with ensuite, walk-in robe, study/sitting zone and private balcony
- \* Walk to high-end shops, cafes, train station, parks, ...

**[rwebay.com.au/2267052](http://rwebay.com.au/2267052)**

Jason Boon 0418 671 494

Geoff Cox 0418 231 004

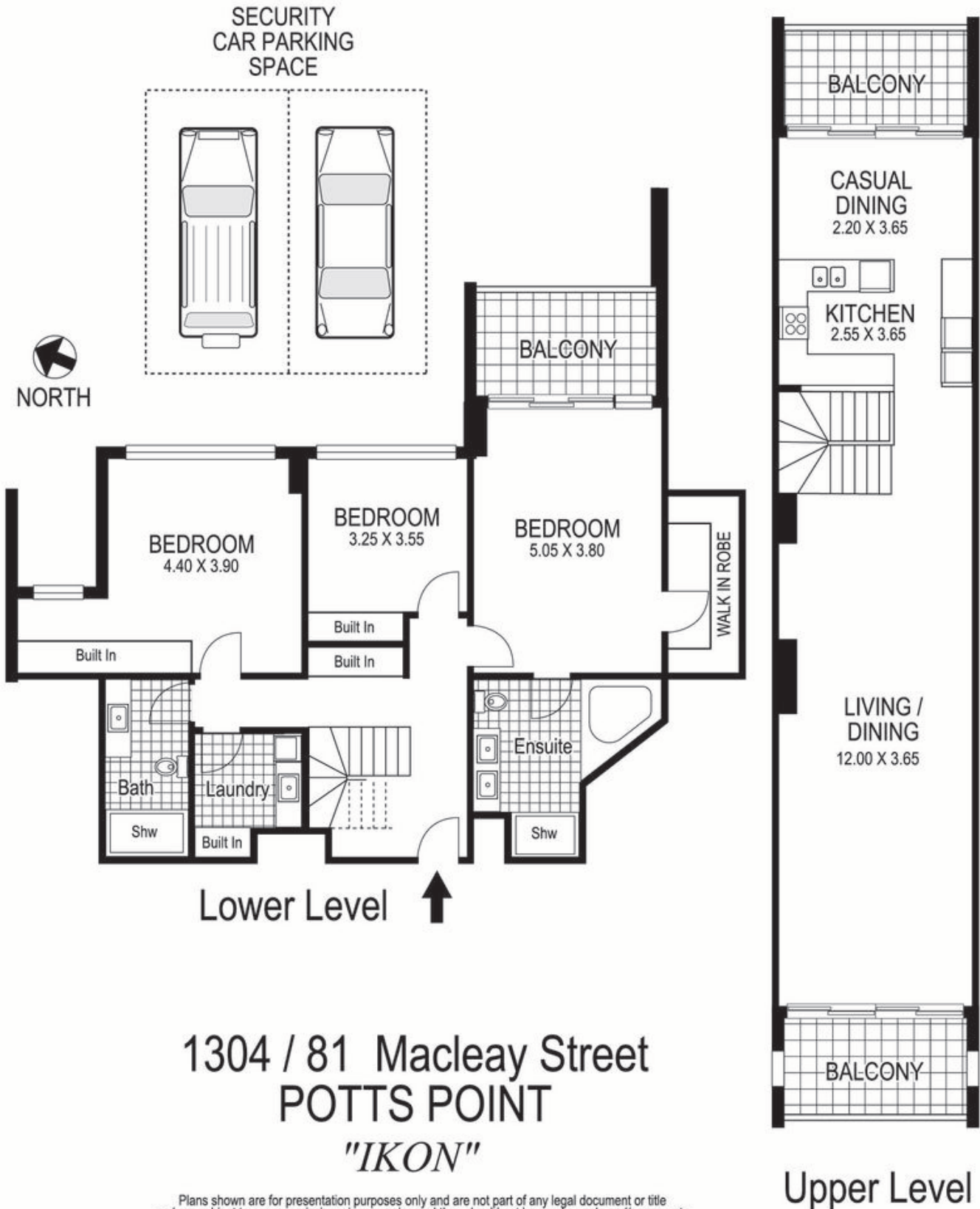
**Proudly Richardson&Wrench**

Richardson & Wrench Elizabeth Bay / Potts Point  
02 8356 2700

Contact:  
Jason Boon  
0418 671 494

Contact:  
Geoff Cox  
0418 231 004

**R&W** | The best reputation  
in real estate  
Elizabeth Bay/Potts Point



Plans shown are for presentation purposes only and are not part of any legal document or title and are subject to errors, omissions, inaccuracies and they should not be used as sole and/or accurate reference for purchasing decision. Interested parties should make their own enquiries using other sources supplied. Dimensions shown on the plans are approximate values in length by width. Illustration by Raoul Isidro 04111 28500.

Every precaution has been taken to establish accuracy of the information in this brochure but does not constitute any representation by the vendor or agent.

**R&W**