



## 4/128 Victoria Street POTTS POINT, NSW

1 bed | 1 bath

This garden level apartment is part of the historic, grand terrace 'Guyln'. Presented beautifully and offering everything you need to enjoy living in this wonderful location.

Features include:

- Spacious house like feel
- Generous open plan living area leading to a large private courtyard
- Seamlessly integrates the in and outdoors for easy entertaining

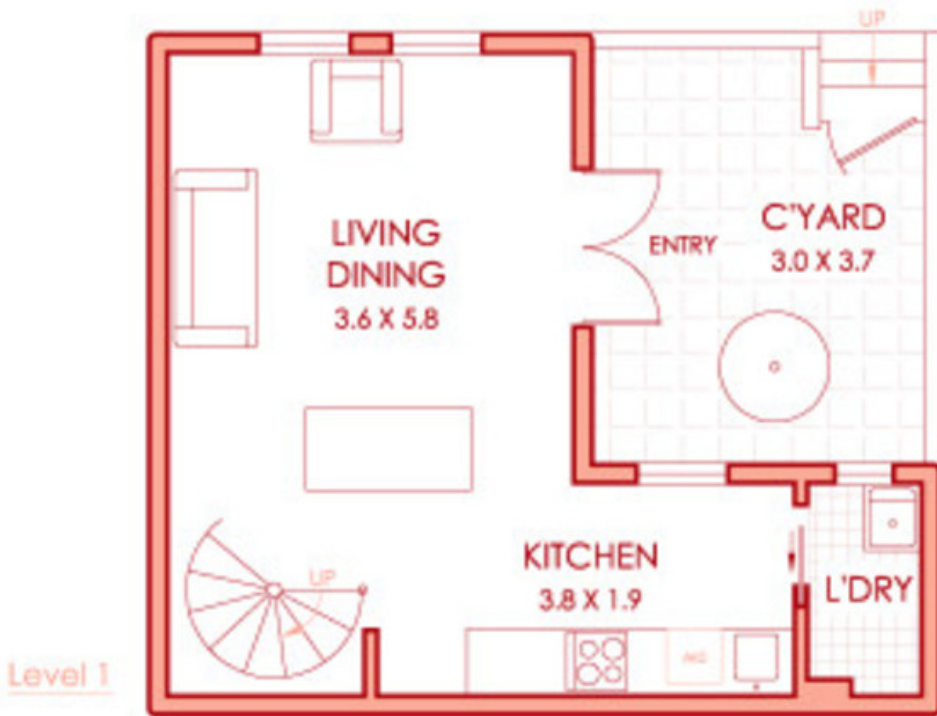
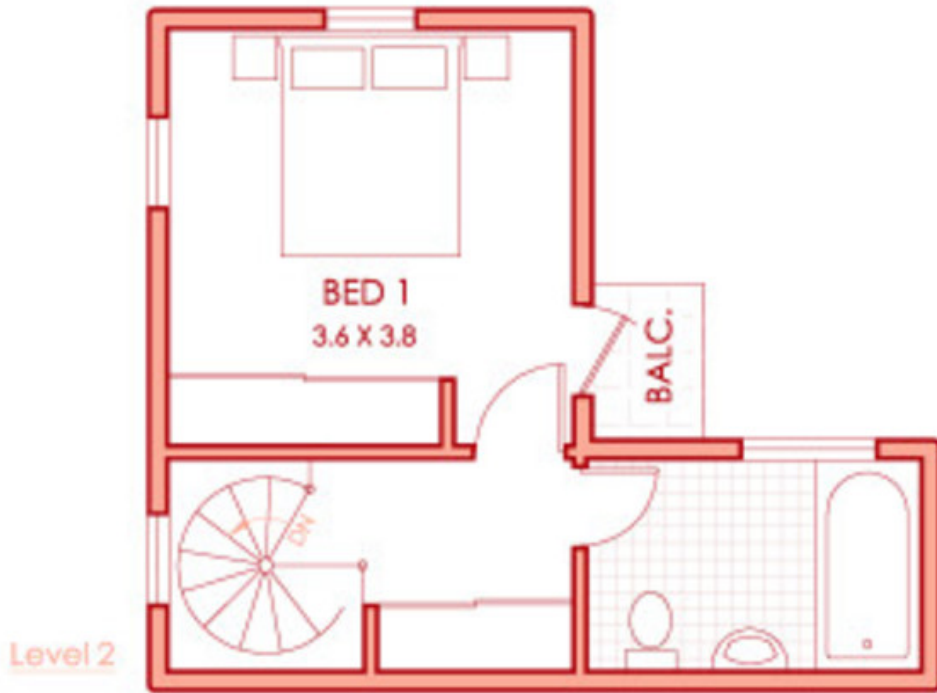
# R&W

[rwebay.com.au/2303145](http://rwebay.com.au/2303145)

R&W Leasing 02 8356 2700

**Proudly Richardson&Wrench**

Richardson & Wrench Elizabeth Bay / Potts Point  
02 8356 2700



We believe the information in this document to be reliable, however interested persons should make their own enquiries. Dimensions are approximate.