



271 Victoria Street DARLINGHURST, NSW

4 bed | 1 bath

With huge potential to add value to, this classic Victorian Terrace is full of period features in a premier location. Zoned mixed commercial / residential this property provides a blank canvas to renovate & improve. An excellent work/home property or solid inner city investment

Features Include:

*Huge street exposure, Hi-visibility location with busy pedestrian traffic
Located right in the heart of Darlinghurst, metres from...

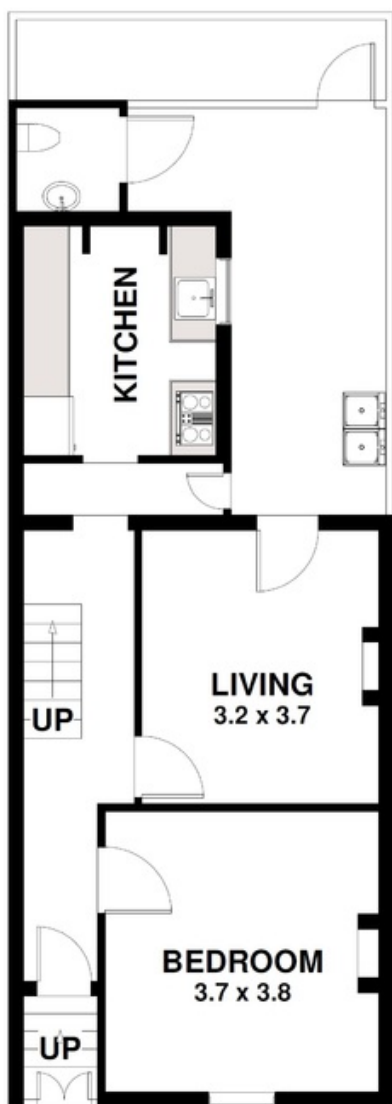
R&W

rwebay.com.au/2305130

Rod Angus 0419 599 888

Proudly Richardson & Wrench

Richardson & Wrench Elizabeth Bay / Potts Point
02 8356 2700



GROUND FLOOR

ACCESS TO
HAYDEN
PLACE



FIRST FLOOR

271 Victoria Street, Darlinghurst

DISCLAIMER CLAUSE The information contained in this brochure has been furnished to us by the vendors. The plan is provided as a guide only. While we trust it to be correct, we cannot guarantee its accuracy. Sizes and areas indicated are approximate only. We have not verified whether or not that information is accurate and do not have any belief one way or another in its accuracy. We do not accept any responsibility to any person for its accuracy and do no more than pass it on. All interested parties should make and rely on their own enquiries in order to determine whether or not this information is in fact accurate.