



59 Victoria Street POTTS POINT, NSW

5 bed | 3 bath | 2 car

One of a stately landmark pair of classic Georgian sandstone residences, this 3-storey indoor/outdoor private home offers grand proportions and timeless style behind a distinguished, approx. 12m wide facade.

- * Oversized layout opens to verandahs and low maintenance courtyards
- * Wide central hall to main entry level, 2nd wide central hall to ground floor

R&W

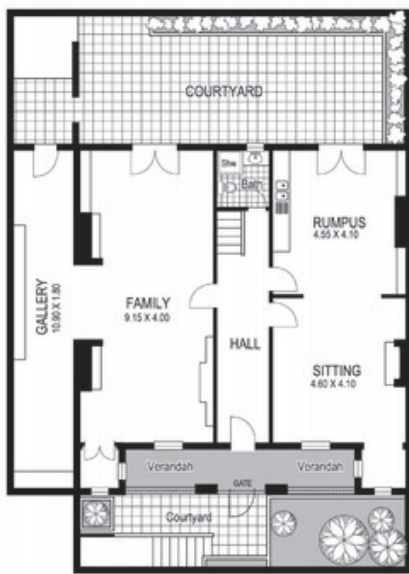
[rwebay.com.au/2310180](https://www.rwebay.com.au/2310180)

Jason Boon 0418 671 494

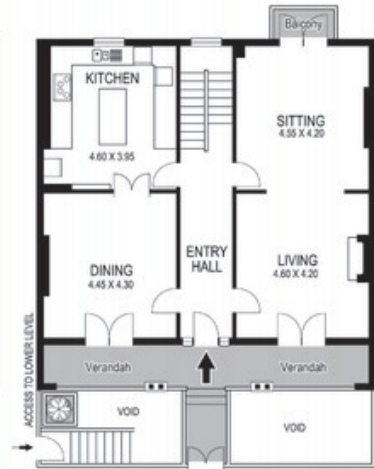
Geoff Cox 0418 231 004

Proudly Richardson&Wrench

Richardson & Wrench Elizabeth Bay / Potts Point
02 8356 2700



Lower Level



Ground Floor

R&W The best reputation in real estate
Elizabeth Bay/Potts Point

Contact:
Jason Boon
0418 671 494

Contact:
Geoff Cox
0418 231 004



First Floor

59 Victoria Street POTTS POINT

Plans shown are for presentation purposes only and are not part of any legal document or title and are subject to errors, omissions, inaccuracies and they should not be used as sole and/or accurate reference for purchasing decision. Interested parties should make their own enquiries using other sources supplied. Dimensions shown on the plans are approximate values in length by width. Illustration by Raoul Isidro 04111 28500.

Every precaution has been taken to establish accuracy of the information in this brochure but does not constitute any representation by the vendor or agent.

