



702/14 Macleay Street POTTS POINT, NSW

2 bed | 2 bath | 2 car

R&W

- * Secure lift access via marble lobby or double security garage and storage
- * Spacious and light-filled layout with well-defined living and bedroom areas
- * Open plan living/dining flows on 2 sides to large terrace with motorised Vergola louvres, gas for bbq
- * Calacatta marble open kitchen with breakfast island, Miele gas hob, oven, microwave, dishwasher, concealed fridge, plenty of built-in storage and an integrated credenza in the dining area
- * King size master bedroom with built-ins and balcony a...

rwebay.com.au/2318153

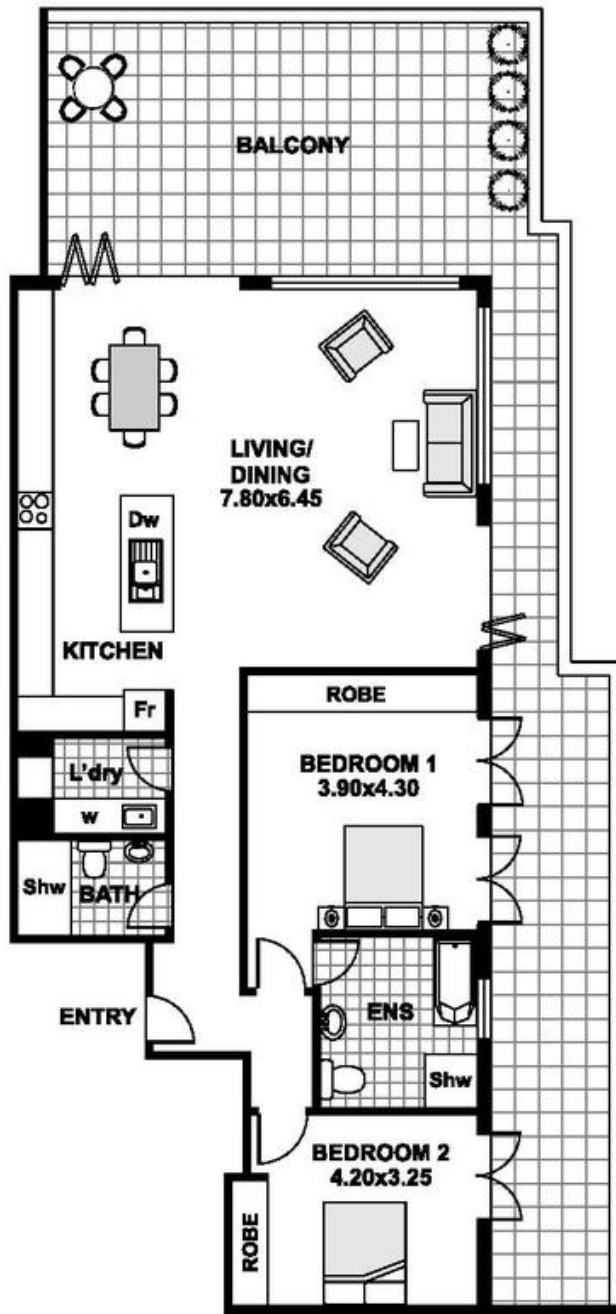
Jason Boon 0418 671 494

Geoff Cox 0418 231 004

Proudly Richardson&Wrench

Richardson & Wrench Elizabeth Bay / Potts Point
02 8356 2700

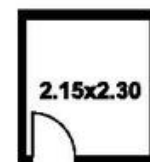
702/14 MACLEAY ST POTTS POINT



FLOOR PLAN



**SECURITY UNDERCOVER
L.U.GARAGE**



STORAGE

Dw	Dishwasher
Fr	Refrigerator
L'dry	Laundry
w	Washing machine

This diagram is for illustrative purpose only. All reasonable care has been taken in the preparation, but no warranty is given to the accuracy of the information. This document does not constitute any part of any offer or contract. Dimensions shown are approximate only. Prospective purchasers must rely on their own enquiries.