



305/8 Ward Avenue POTTS POINT, NSW

1 bed | 1 bath

Conveniently located at the gateway to Elizabeth Bay Road & Ward Avenue, this modern apartment enjoys elevated position in a leafy cosmopolitan locale. Practical, airy and quietly 3rd floor positioned in a well maintained security block, buyers will delight in the popular parkside setting of this building. Set alongside near Lawrence Hargraves Reserve, and virtually steps to landmark Fitzroy Gardens, it's moments to cool cafes and the trendy Organic Food & Farmers Markets, as well as shops, supermarkets, boutiques, train station, city buses and Rushcutters Bay marinas.

R&W

rwebay.com.au/2345202

Luke McDonnell 0418 844 110

Angelo Bouras 0401 658 653

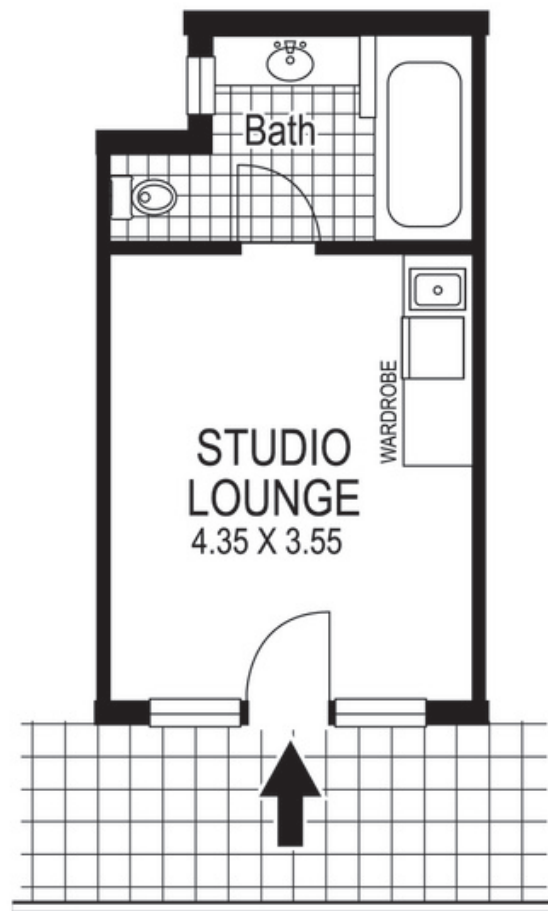
Proudly Richardson&Wrench

Richardson & Wrench Elizabeth Bay / Potts Point
02 8356 2700

R&W | The best reputation
in real estate
Elizabeth Bay / Potts Point

Contact:
Luke McDonnell
0418 844 110

Contact:
Angelo Bouras
0401 658 653



305 / 8 Ward Avenue
POTTS POINT
"MADISON'S"

Plans shown are for presentation purposes only and are not part of any legal document or title and are subject to errors, omissions, inaccuracies and they should not be used as sole and/or accurate reference for purchasing decision. Interested parties should make their own enquiries using other sources supplied. Dimensions shown on the plans are approximate values in length by width. Illustration by Raoul Isidro 04111 28500.

Every precaution has been taken to establish accuracy of the information in this brochure but does not constitute any representation by the vendor or agent.

R&W