



## 205/14 Macleay Street POTTS POINT, NSW

1.5 bed | 2 bath | 1 car

**R&W**

Enjoying exclusivity and relaxed luxury in the heart of Sydney's most fashionable locale, this extra large one-bedroom-plus-study apartment overlooks the leafy streetscape and buzzing cosmopolitan lifestyle. A perfect city pad for young professionals, investors or discerning buyers downsizing from a large family home, this pet-friendly designer apartment offers a prime position in Pomeroy - renowned as one of the finest modern security buildings. With an extensive choice of quality shops, cafes, parks, transport links and Woolloomooloo Bay restaurants just metres from the doorstep, this ultra-spacious apartment has a very versatile layout to suit your individuality.

[rwebay.com.au/2350698](http://rwebay.com.au/2350698)

Greg McKinley 0412 044 822

Andrew Hoggett 0412 208 614

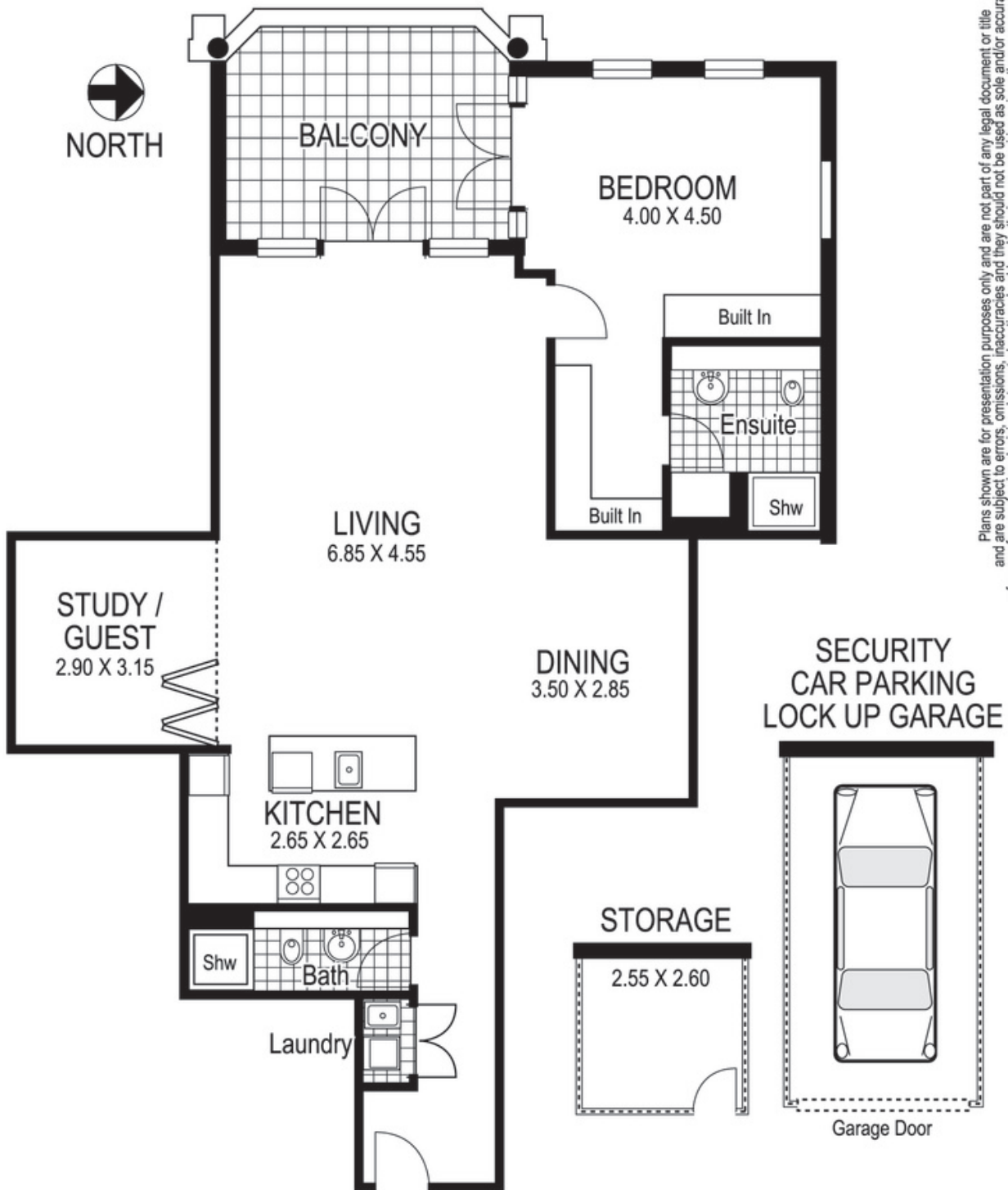
**Proudly Richardson&Wrench**

Richardson & Wrench Elizabeth Bay / Potts Point  
02 8356 2700

Contact:  
Greg McKinley  
0412 044 822

Contact:  
Andrew Hoggett  
0412 208 614

**R&W** | The best reputation  
in real estate  
**Elizabeth Bay/Potts Point**



Plans shown are for presentation purposes only and are not part of any legal document or title and are subject to errors, omissions, inaccuracies and they should not be used as sole and/or accurate reference for purchasing decision. Interested parties should make their own enquiries using other sources supplied. Dimensions shown on the plans are approximate values in length by width. Illustration by Raoul Isidro 04111 26500.

205 / 14 Macleay Street  
**POTTS POINT**  
*"POMEROY"*

Every precaution has been taken to establish accuracy of the information in this brochure but does not constitute any representation by the vendor or agent.

**R&W**