

## 321/81 Macleay Street POTTS POINT, NSW

1 bed | 1 bath | 1 car

# R&W

Stylish, generous (approx 69sqm indoor/outdoor living + 15sqm parking) and architecturally innovative, this bright contemporary 2-level apartment offers a pet-friendly city pad for discerning buyers. Enjoying an open outlook with bonus cameo-views towards the Sydney Harbour Bridge and NYE fireworks, this sophisticated apartment combines sunlight, tranquility and idyllic privacy in the exclusive Ikon security building - regarded as one of Mirvac's most successful. Perfect for a lockup-and-go lifestyle in the heart of ultra-fashionable Potts Point, it's footsteps to cafes, restaurants, waterfront parks, transport choices and only minutes to Sydney CBD.

...

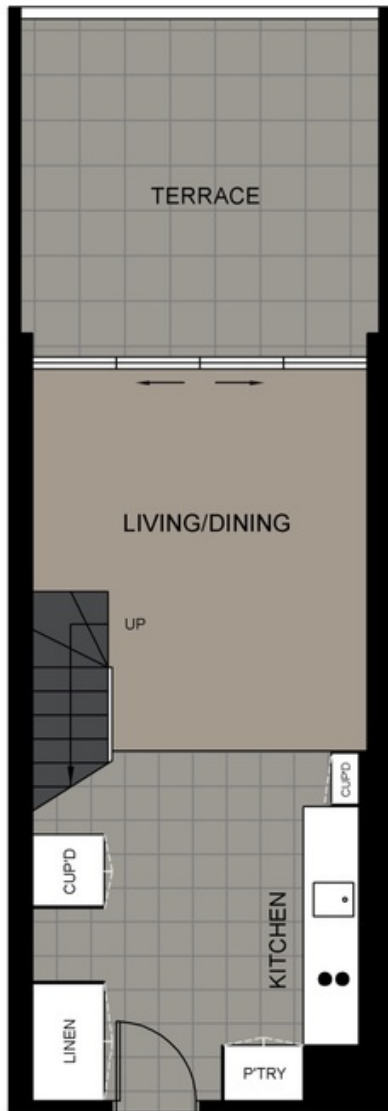
[rwebay.com.au/2367907](http://rwebay.com.au/2367907)

Jason Boon 0418 671 494

Geoff Cox 0418 231 004

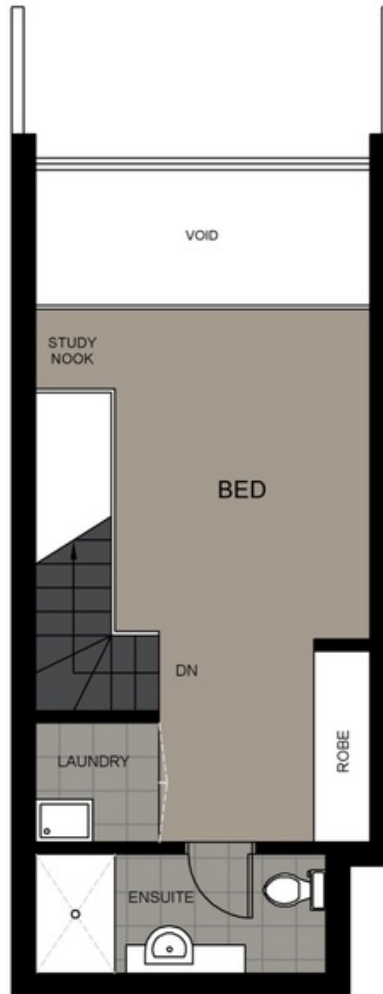
**Proudly Richardson&Wrench**

Richardson & Wrench Elizabeth Bay / Potts Point  
02 8356 2700



ENTRY LEVEL

AREAS:  
 APARTMENT : 69 SQM APPROX.  
 PARKING : 15 SQM APPROX.  
 TOTAL : 84 SQM APPROX.



UPPER LEVEL



SECURE UNDERCOVER  
 CARSPACE



PLANS ARE INDICATIVE OF LAYOUT AND SHOULD NOT BE TAKEN AS AN EXACT REPRESENTATION OF THE PROPERTY. DIMENSIONS AND ASPECT ARE APPROXIMATE

321/81 MACLEAY STREET

POTTS POINT