



306/145 Victoria Street POTTS POINT, NSW

| 1 bath | 1 car

R&W

North facing and quietly located on the viewside of the updated Victoria Towers security block, this sunlit studio apartment offers elevated views across to the Botanic Gardens, the CBD, Opera House, Harbour Bridge and NYE fireworks. Long held and well maintained in comfortable original condition, the light and airy layout is a ready-renter as is, but a sleek contemporary makeover could turn this unspoiled gem into a much more sophisticated city pad. Conveniently located, just a short walk to cafes, restaurants, shops, supermarkets, parks, train station, express buses and only minutes to the CBD - rarely will you find such a value-packed studio pad in such a popular price range.

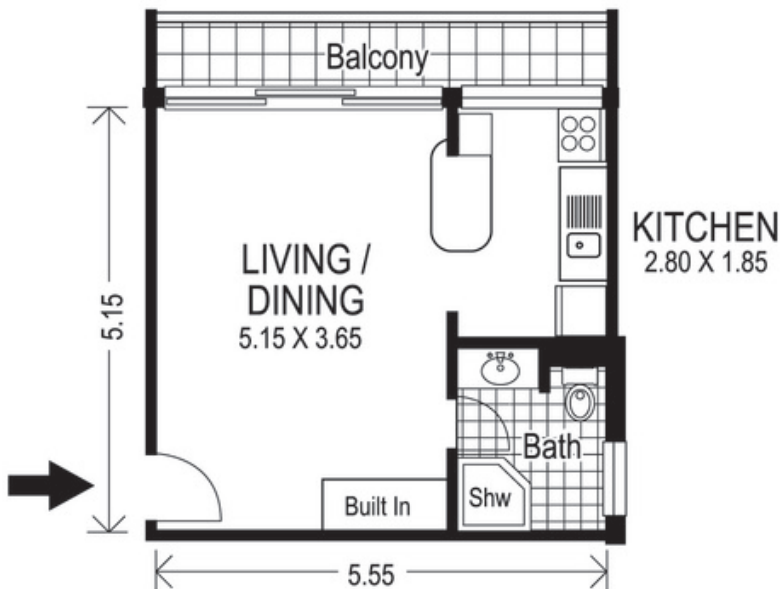
rwebay.com.au/2368014

Geoff Cox 0418 231 004

Proudly Richardson&Wrench

Richardson & Wrench Elizabeth Bay / Potts Point
02 8356 2700

Contact:
Geoff Cox
0418 231 004



SECURITY
CAR PARKING
SPACE



Note: Refer to the Strata Plan for
the actual size and shape of the
car parking space

306 / 145 Victoria Street
POTTS POINT
"VICTORIA TOWERS"

Plans shown are for presentation purposes only and are not part of any legal document or title and are subject to errors, omissions, inaccuracies and they should not be used as sole and/or accurate reference for purchasing decision. Interested parties should make their own enquiries using other sources supplied. Dimensions shown on the plans are approximate values in length by width. Illustration by Raoul Isidro 04111 28500.