



63/12 Wylde Street POTTS POINT, NSW

1 bed | 1 bath

R&W

- * Level lift access via smartly upgraded main security lobby
- * Apartment 63 is privately positioned away from the street
- * Open living/dining areas lead out to North facing balcony
- * Sleek contemporary Quantum quartz kitchen with breakfast bar, ceramic hob, st/steel oven, rangehood, ample built-in storage, space for dishwasher
- * Spacious bedroom with balcony access and built-in robes
- * Light airy modernised bathroom with bathtub
- * High ceilings, dark stained timber floors, hall linen cupboard

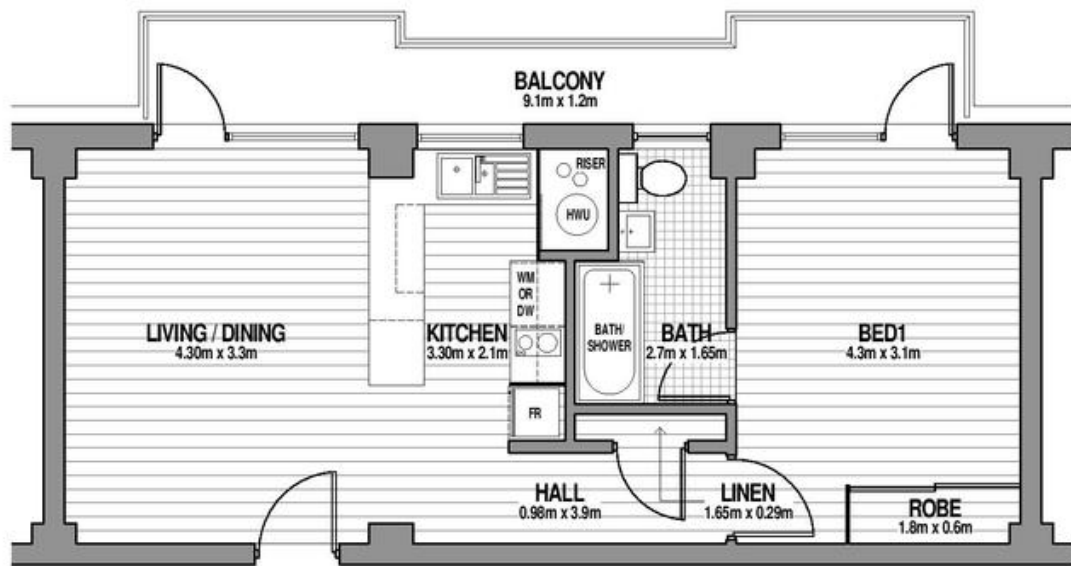
rwebay.com.au/2370622

Jason Boon 0418 671 494

Geoff Cox 0418 231 004

Proudly Richardson&Wrench

Richardson & Wrench Elizabeth Bay / Potts Point
02 8356 2700



ADDRESS
63/12 Wylde Street, Potts Point

