



1406/1 Kings Cross Road DARLINGHURST, NSW

2 bed | 2 bath | 1 car

R&W

- * High above the gateway to Rushcutters Bay, Potts Point, Darlinghurst and the City
- * Level lift access via grand main lobby or from secure parking + enormous storage cage
- * Spacious open plan dining/living areas with private balcony, central marble foyer
- * Modernised kitchen, quality SS appliances, ample built-ins
- * 2 king-size bedrooms, each with sitting area and built-in wardrobes
- * Established garden areas, sunny terraces, billiards r...

rwebay.com.au/2387923

Luke McDonnell 0418 844 110

Angelo Bouras 0401 658 653

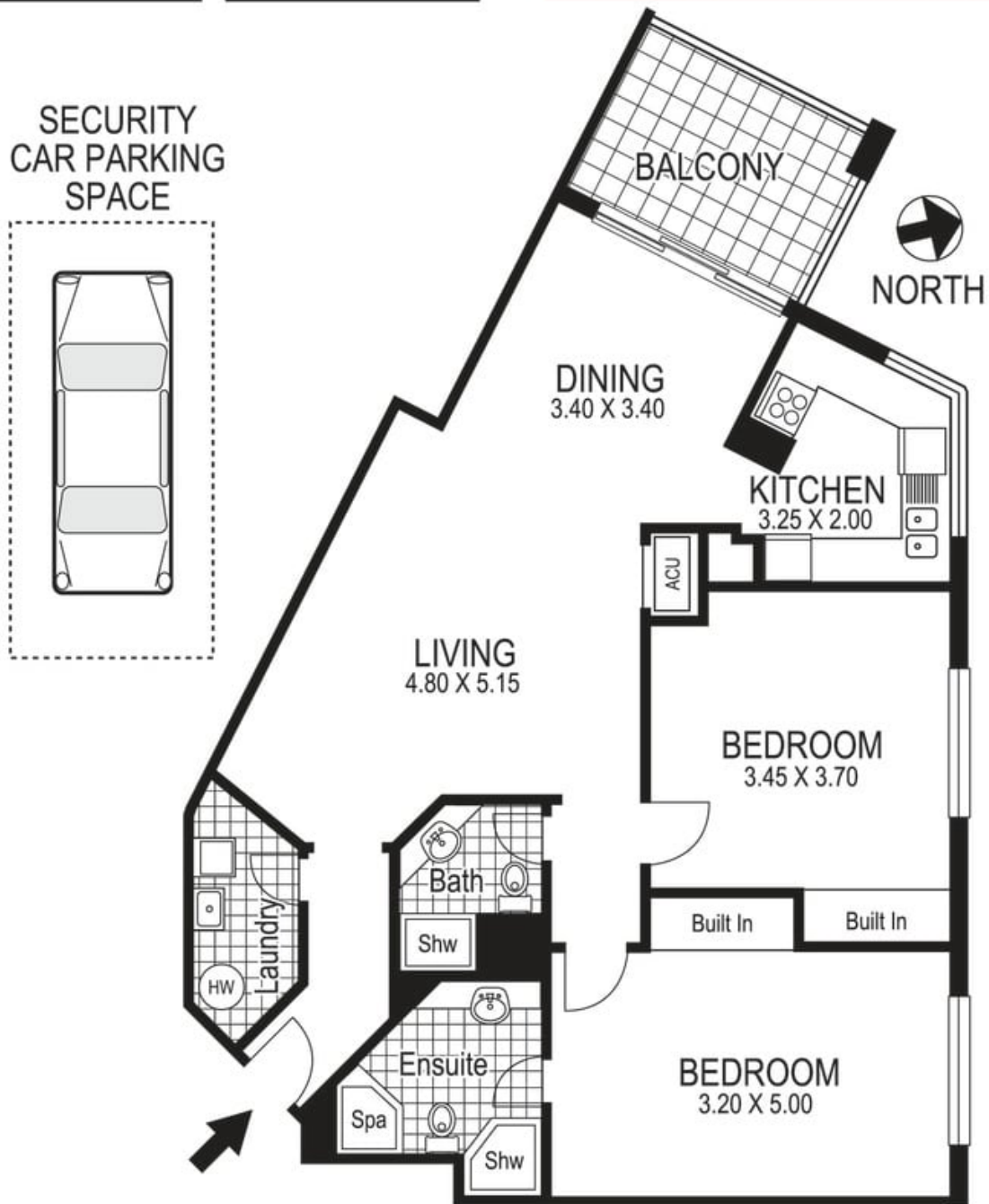
Proudly Richardson&Wrench

Richardson & Wrench Elizabeth Bay / Potts Point
02 8356 2700

Contact:
Luke McDonnell
0418 844 110

Contact:
Angelo Bouras
0401 658 653

R&W | The best reputation
in real estate
Elizabeth Bay/Potts Point



Apartment 1406
1 Kings Cross Road
RUSHCUTERS BAY
"ELAN"

Plans shown are for presentation purposes only and are not part of any legal document or title and are subject to errors, omissions, inaccuracies and they should not be used as sole and/or accurate reference for purchasing decision. Interested parties should make their own enquiries using other sources supplied. Dimensions shown on the plans are approximate values in length by width. Illustration by Raoul Isidro 04111 28500.

Every precaution has been taken to establish accuracy of the information in this brochure but does not constitute any representation by the vendor or agent.

R&W