



## 11 and 12/8-10 Billyard Avenue ELIZABETH BAY, NSW

3 bed | 3 bath | 2 car

**R&W**

- \* Lift access via updated main security lobby or from security parking + lockup garage + storage
- \* Private lift lobby, sparkling harbour views as soon as front door is opened
- \* Sprawling open plan living areas with stacking glass doors to two N/E balconies with motorised blinds
- \* Presiding over sweeping views of the glorious harbor and boat-filled bay
- \* Innovative circular study nook or bar, additional large open dining zone
- \* Breakfast area adjoins marble and stainless steel kit...

[rwebay.com.au/2391935](http://rwebay.com.au/2391935)

Greg McKinley 0412 044 822

Andrew Hoggett 0412 208 614

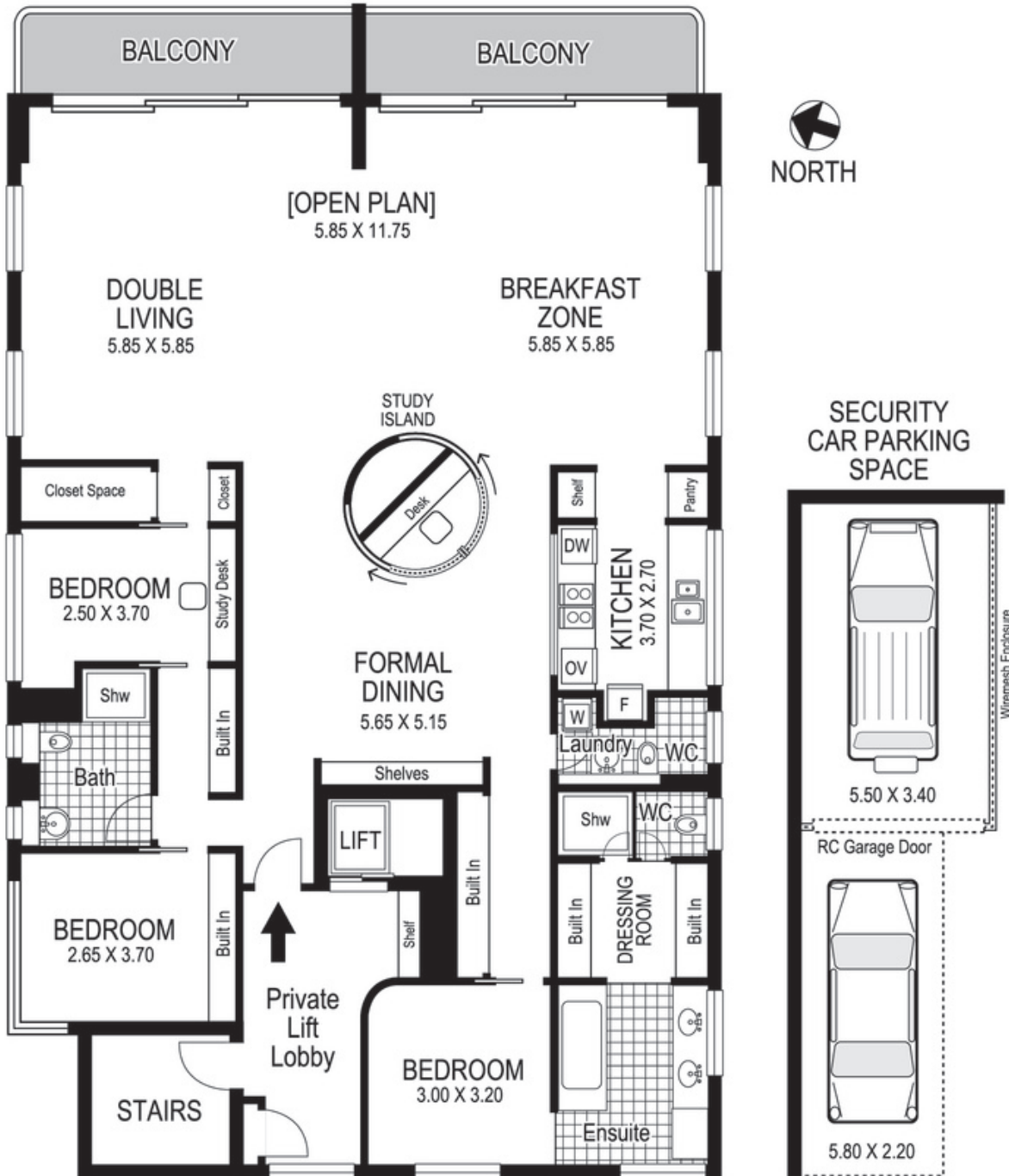
**Proudly Richardson&Wrench**

Richardson & Wrench Elizabeth Bay / Potts Point  
02 8356 2700

Contact:  
 Greg McKinley  
 0412 044 822

Contact:  
 Andrew Hoggett  
 0412 208 614

**R&W** | The best reputation  
 in real estate  
 Elizabeth Bay/Potts Point



## Apartments 11 & 12 8-10 Billyard Avenue ELIZABETH BAY

Plans shown are for presentation purposes only and are not part of any legal document or title and are subject to errors, omissions, inaccuracies and they should not be used as sole and/or accurate reference for purchasing decision. Interested parties should make their own enquiries using other sources supplied. Dimensions shown on the plans are approximate values in length by width. Illustration by Raoul Isidro 04111 28500.

Every precaution has been taken to establish accuracy of the information in this brochure but does not constitute any representation by the vendor or agent.

**R&W**