



3/38 Macleay Street POTTS POINT, NSW

3 bed | 3 bath | 2 car

R&W

- * Secure level lift access directly into your own 3rd floor lift lobby and foyer
- * Light-filled large layout with all living rooms and bedrooms opening to terraces
- * Large main living and dining areas lead out to east terrace, bonus harbor cameos
- * Spacious open family/TV room leads out to huge loggia-style west terrace
- * Granite Ilve gas huge galley kitchen, 2 pantries, loads of storage, 2 atrium garden areas
- * 3 spacious bedrooms and 3 marble bathrooms (2 ensuite...

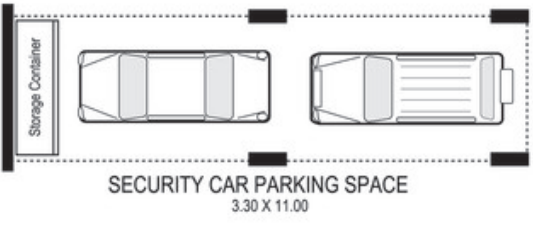
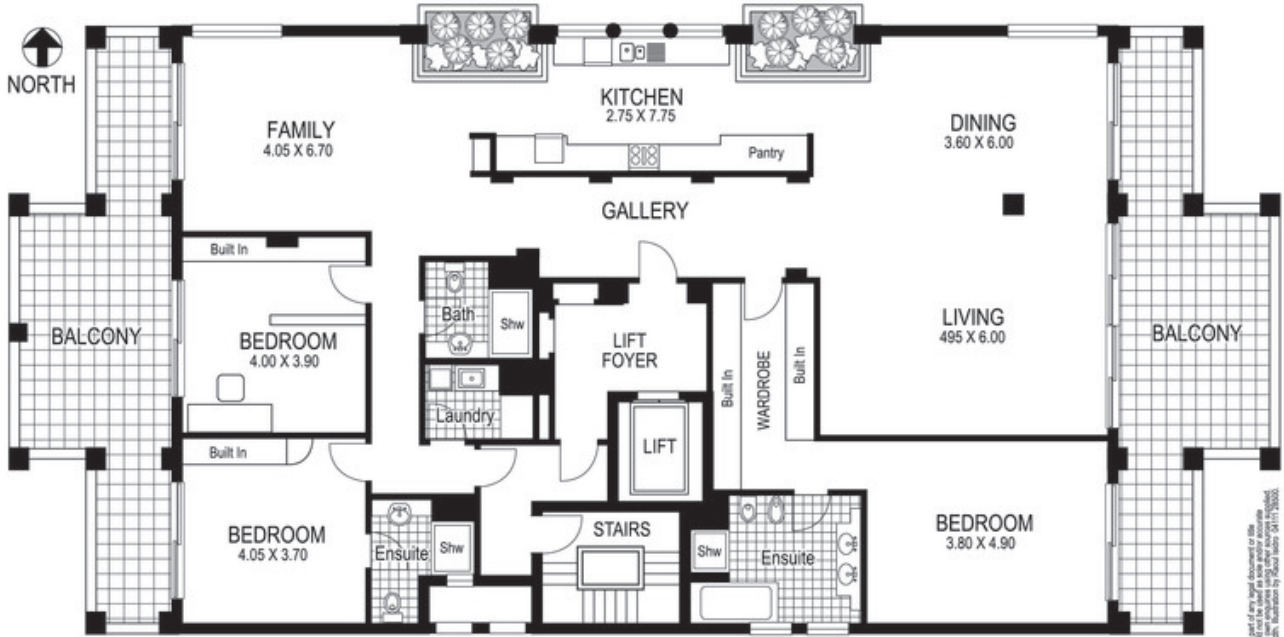
rwebay.com.au/2452551

Jason Boon 0418 671 494

Geoff Cox 0418 231 004

Proudly Richardson&Wrench

Richardson & Wrench Elizabeth Bay / Potts Point
02 8356 2700



Contact:
Jason Boon
0418 671 494

Contact:
Geoff Cox
0418 231 004

R&W The best reputation
in real estate
Elizabeth Bay/Potts Point

3 / 38 Macleay Street POTTS POINT
"DORCHESTER"

Please note that for presentation purposes only and are not part of any legal document or file and are subject to errors, omissions, inaccuracies and things should not be used as sole source of information. Dimensions shown on the plans are approximate, measured to length by wall. Illustrated by R&W Realty 0418 231 000.

Every precaution has been taken to establish accuracy of the information in this brochure but does not constitute any representation by the vendor or agent.

